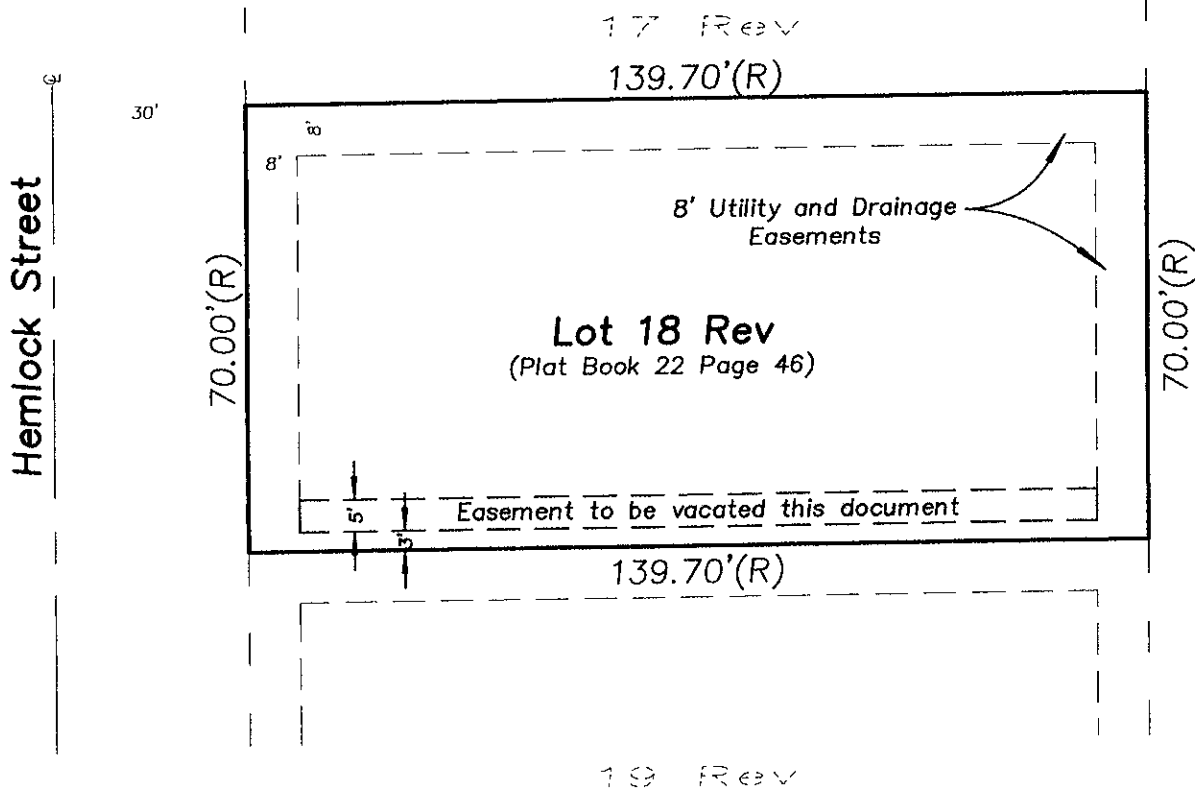
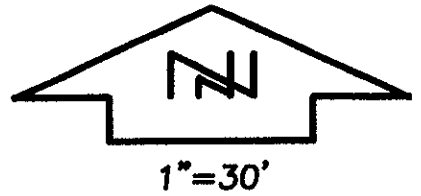


EXHIBIT A

VACATION OF EASEMENT
LOT 18 REV, BLOCK 2, ROBBINSDALE ADDITION #9
LOCATED IN SECTION 18, T1N, R8E, BHM
RAPID CITY, PENNINGTON COUNTY, SOUTH DAKOTA



PREPARED BY:
FISK LAND SURVEYING & CONSULTING ENGINEERS, INC.
P.O. BOX 8154, RAPID CITY, SD 57709 (605) 348-1538 December 2, 2008