

LOTS 1-5 OF BLOCK 2,
 RUSHMORE CROSSING,
 VACATED PORTION OF CAMBELL STREET,
 VACATED PORTION OF EGLIN STREET
 AND DEDICATED EGLIN STREET RIGHT-OF-WAY

(formerly Tracts A and B, Block 2 of Rushmore Crossing,
 a portion of Cambell Street Right-of-Way,
 & a portion of Eglin Street Right-of-Way)

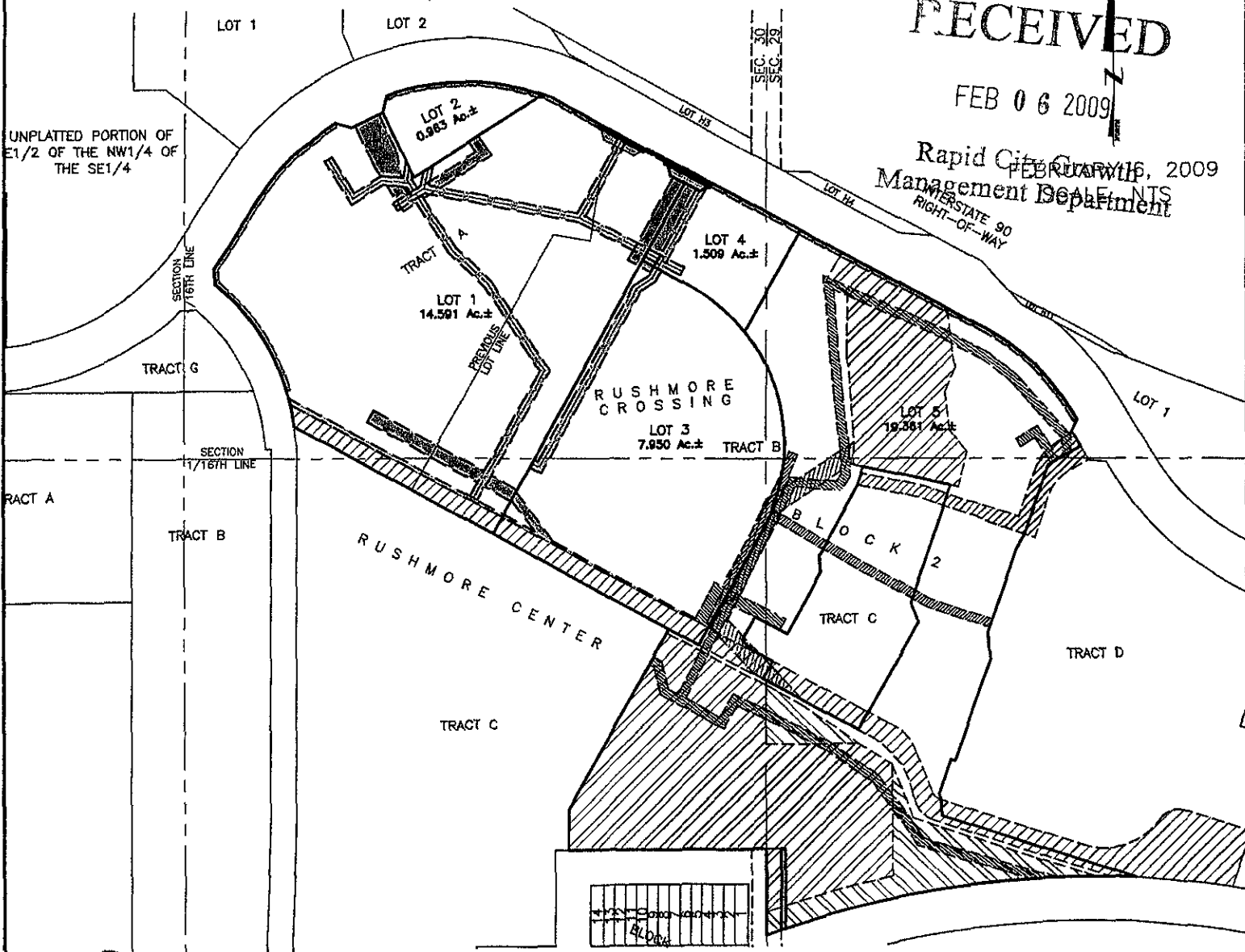
LOCATED IN THE W1/2 OF THE SW1/4 OF SECTION 29,
 & THE E1/2 OF THE SE1/4 OF SECTION 30

ALL IN T2N, R8E, BHM
 RAPID CITY, PENNINGTON COUNTY, SOUTH DAKOTA

RECEIVED

FEB 06 2009

Rapid City Planning & Zoning Department
 FEBRUARY 16, 2009



CITY HALL 1903

Renner & Associates, LLC.

616 Sixth St. * Rapid City, SD 57701 * 605/721-7310
 FAX: 605/721-7313 * E-MAIL: Gary@RennerAssoc.com