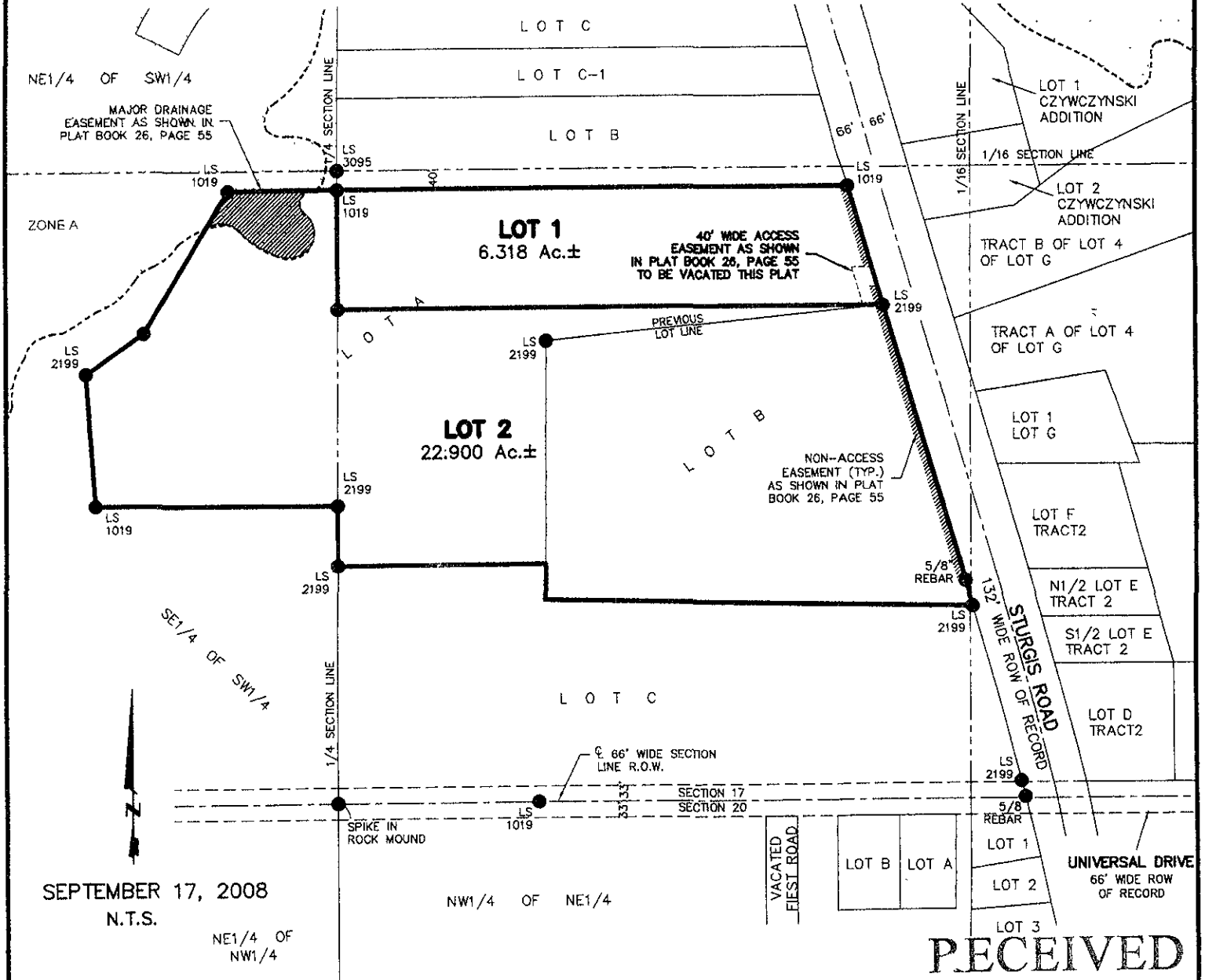


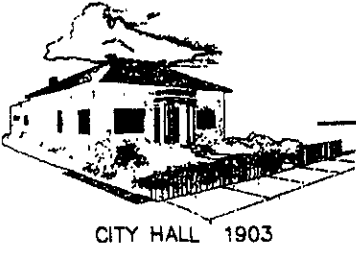
# PLAT OF LOTS 1 AND 2 OF KELLER SUBDIVISION

(formerly Lots A & B of Keller Subdivision)

LOCATED IN THE S1/2 OF SE1/4 & IN THE SE1/4 OF THE SW1/4  
SECTION 17, T2N, R7E, BHM,  
PENNINGTON COUNTY, SOUTH DAKOTA



SEPTEMBER 17, 2008  
N.T.S.



## Renner & Associates, LLC.

616 Sixth St. \* Rapid City, SD 57701 \* 605/721-7310  
FAX: 605/721-7313 \* E-MAIL: Gary@RennerAssoc.com

# RECEIVED

NOV 25 2008

Rapid City Growth  
Management Department