

Downtown Public Parking Plan

January 2009

WEST BLVD

9TH ST

MT RUSHMORE RD

7TH ST

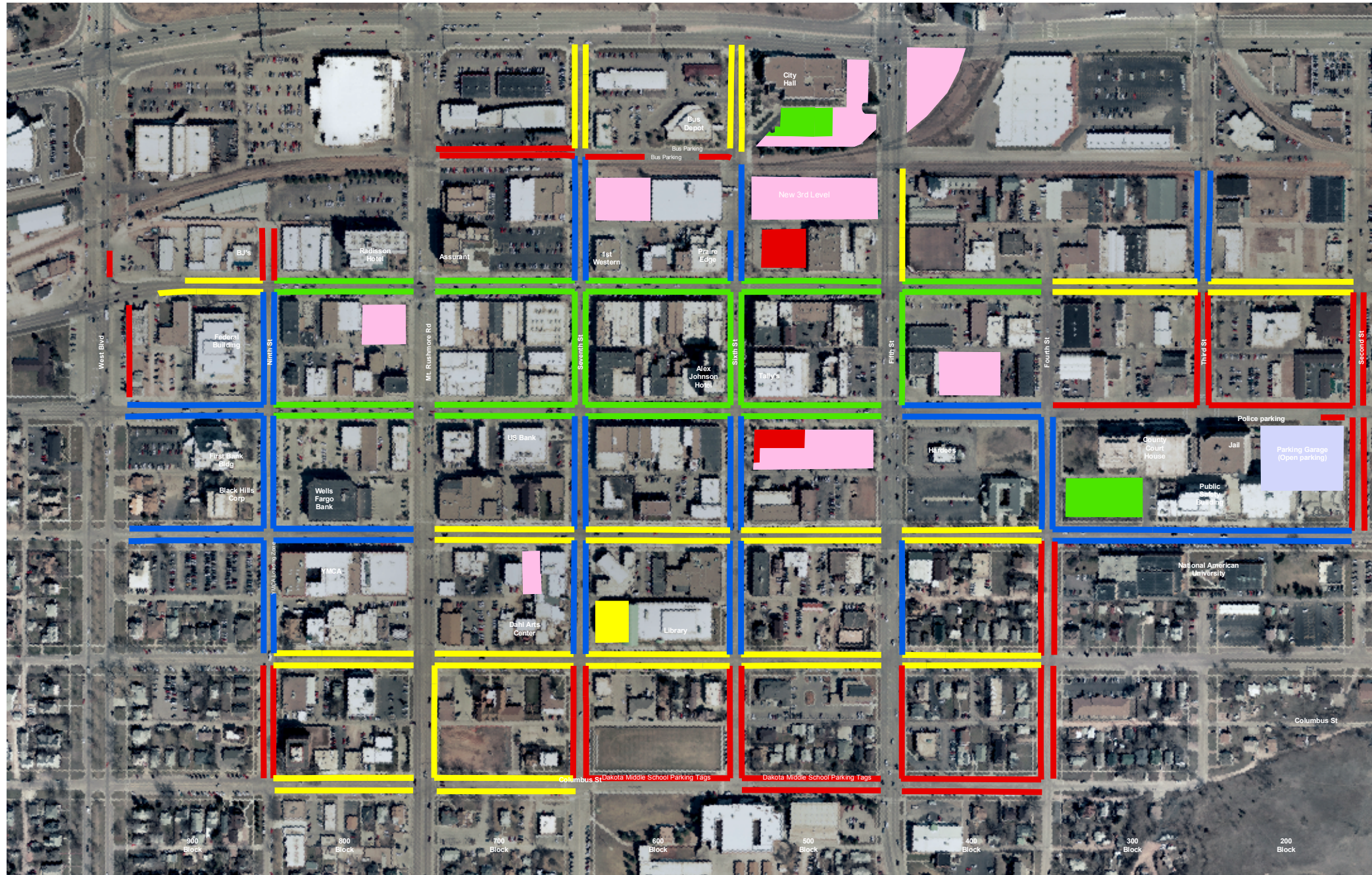
6TH ST

5TH ST

4TH ST

3RD ST

2ND ST



RAPID / APOLDA ST

MAIN ST

SAINT JOSEPH ST

KANSAS CITY ST

QUINCY ST

COLUMBUS ST

Legend

-  2 HOUR NON-METERED
-  2 HOUR METERS
-  4 HOUR METERS
-  10 HOUR METERS
-  LEASED PARKING
-  PARKING GARAGE

