

NOT TO SCALE  
JANUARY 28, 2008

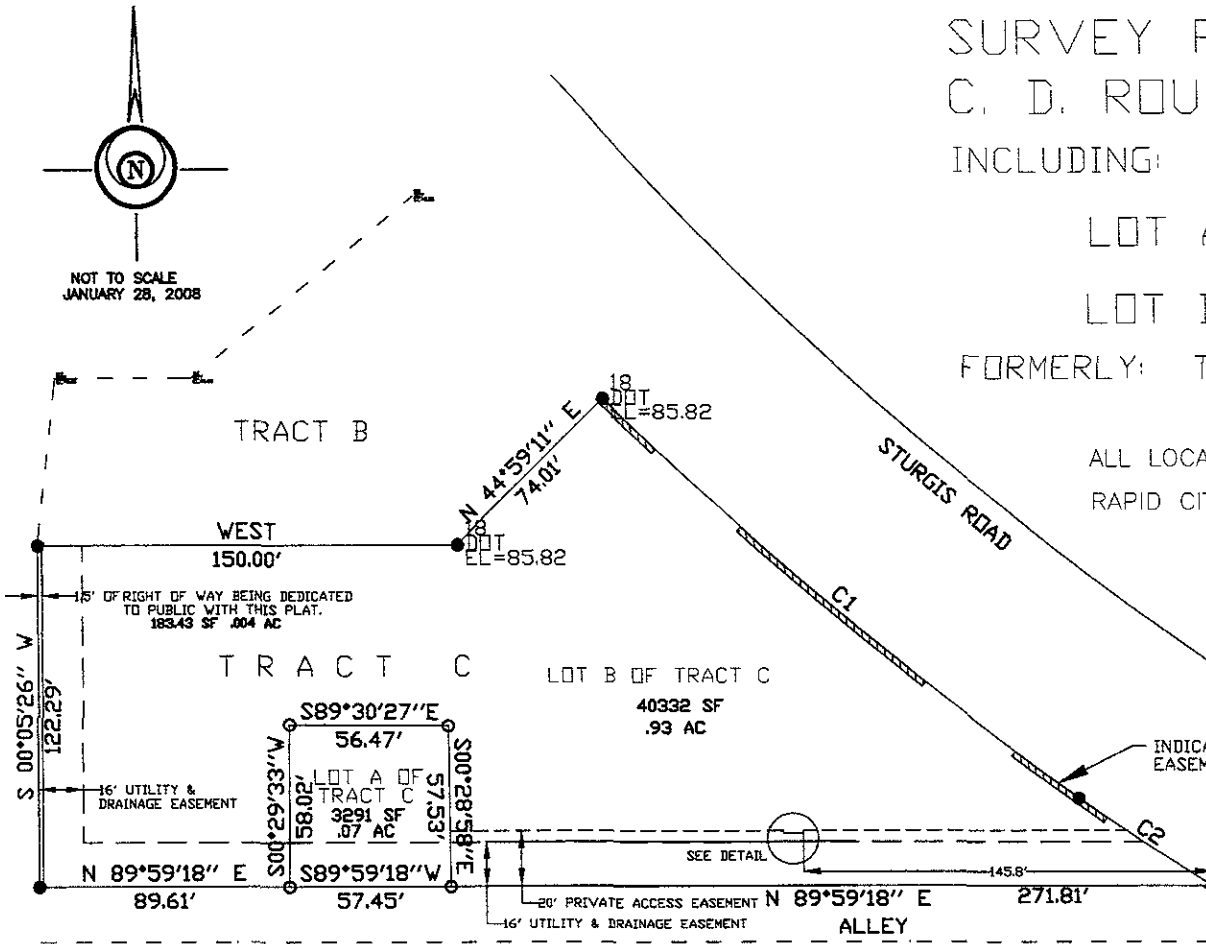
SURVEY PLAT OF:  
C. D. ROUNDS SUBDIVISION  
INCLUDING:

LOT A OF TRACT C  
AND  
LOT B OF TRACT C

FORMERLY: TRACT C OF C.D. ROUNDS SUBDIVISION

ALL LOCATED IN: SE 1/4 SECTION 33 , T2N, R7E, BHM.  
RAPID CITY, PENNINGTON COUNTY, SOUTH DAKOTA

NOTICE OF HEARING  
MAY BE SENT TO:  
LARRY WETSCH  
3213 W. MAIN ST. #314  
RAPID CITY, SD 57702



INDICATES "NON-ACCESS"  
EASEMENT(TYPICAL)

NOTE: LOT A OF TRACT C IS HEREBY DESIGNATED A  
UTILITY LOT FOR THE USE OF A COMMUNICATION  
TOWER ONLY, ANY CHANGES TO THIS USE MUST BE  
APPROVED BY THE CITY OF RAPID CITY.

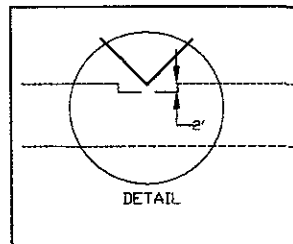
NUMBER	DELTA ANGLE	CHORD DIRECTION	TANGENT	RADIUS	ARC LENGTH	CHORD LENGTH
C1	09°09'16"	S 49°44'48" E	111.03	1386.87	221.59	221.36
C2	02°21'09"	S 56°23'43" E	28.47	1386.87	56.94	56.94

BUILDING RESTRICTIONS:  
Per Zoning Requirements

UTILITY & MINOR DRAINAGE EASEMENT:  
8' wide on the interior side of all Lot lines.

DRAINAGE NOTES:

All major drainage easements  
shown hereon shall be kept  
free of all obstructions including,  
but not limited to buildings, walls



LEGEND:

- - Found survey monument as noted
- ⊙ - Found 5/8 Reber with cap marked "Davis Eng 3095"
- - Set 5/8 rebar with survey cap marked "Davis Eng 3095" Except where noted.

(R) - Recorded in previous survey ○

(M) - Measured this survey

BASIS OF BEARINGS: As shown hereon

CERTIFICATE OF TREASURER: