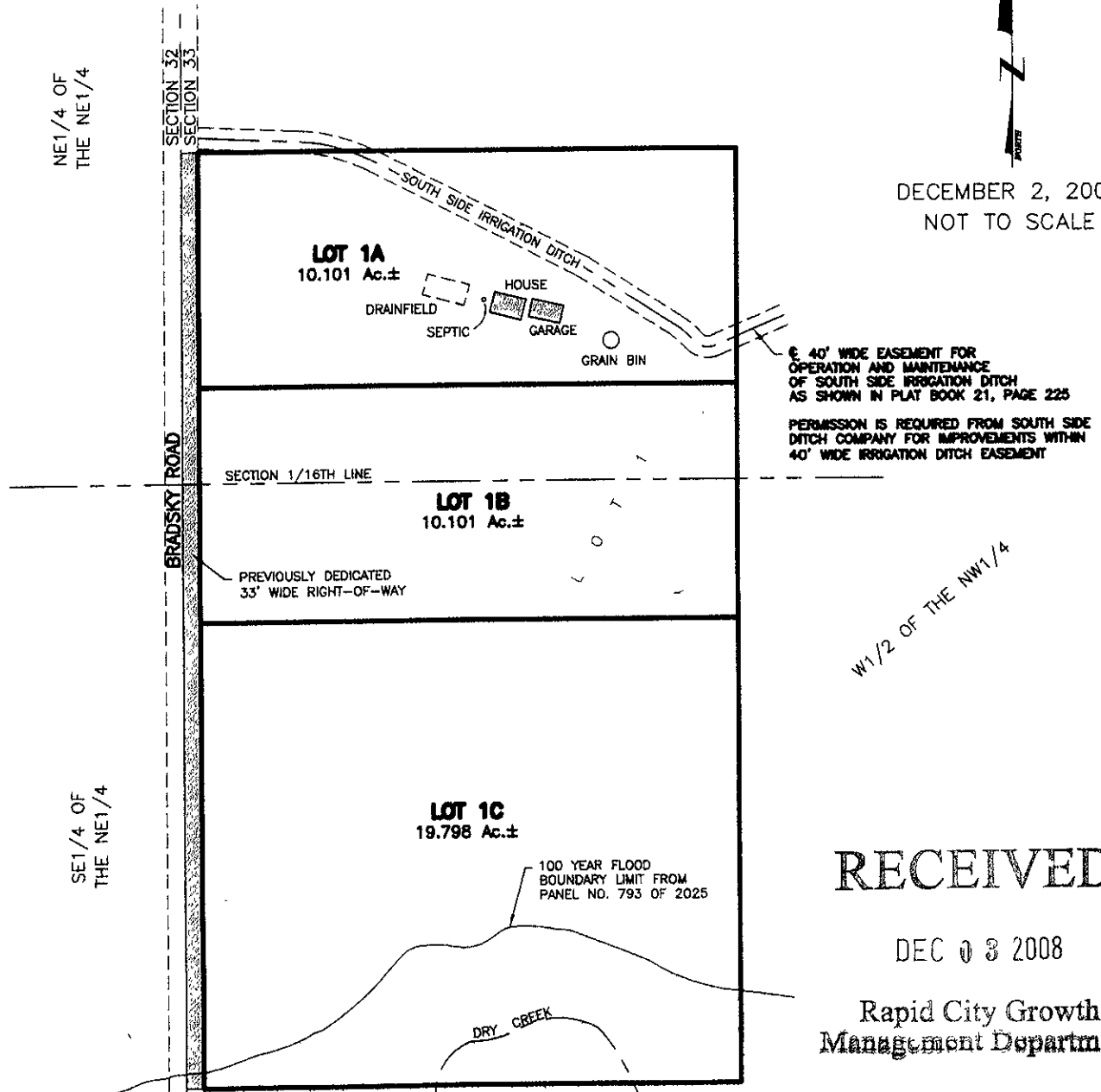


LAYOUT PLAT OF LOTS 1A & 1B, JUNDT SUBDIVISION

(formerly Lot 1 of Jundt Subdivision)
LOCATED IN THE W1/2 OF THE NW1/4,
SECTION 33, T1N, R9E, BHM,
PENNINGTON COUNTY, SOUTH DAKOTA



DECEMBER 2, 2008
NOT TO SCALE



€ 40' WIDE EASEMENT FOR
OPERATION AND MAINTENANCE
OF SOUTH SIDE IRRIGATION DITCH
AS SHOWN IN PLAT BOOK 21, PAGE 225
PERMISSION IS REQUIRED FROM SOUTH SIDE
DITCH COMPANY FOR IMPROVEMENTS WITHIN
40' WIDE IRRIGATION DITCH EASEMENT

RECEIVED

DEC 03 2008

Rapid City Growth
Management Department



CITY HALL 1903

Renner & Associates, LLC.

616 Sixth St. * Rapid City, SD 57701 * 605/721-7310
FAX: 605/721-7313 * E-MAIL: Gary@RennerAssoc.com