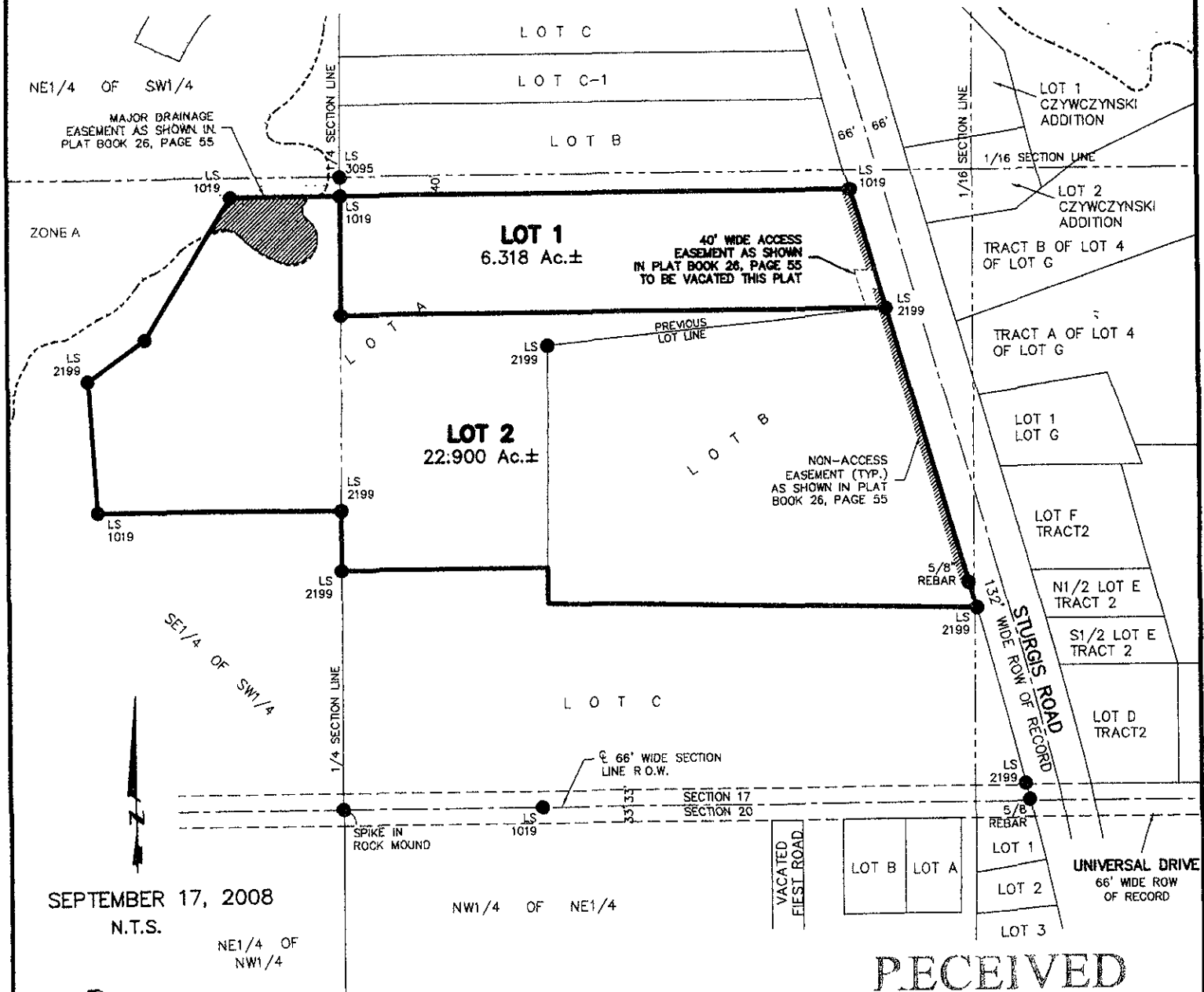


PLAT OF LOTS 1 AND 2 OF KELLER SUBDIVISION

(formerly Lots A & B of Keller Subdivision)

LOCATED IN THE S1/2 OF SE1/4 & IN THE SE1/4 OF THE SW1/4
SECTION 17, T2N, R7E, BHM,
PENNINGTON COUNTY, SOUTH DAKOTA



SEPTEMBER 17, 2008

N.T.S.

NE1/4 OF
NW1/4



CITY HALL 1903

Renner & Associates, LLC.

NOV 25 2008

616 Sixth St. * Rapid City, SD 57701 * 605/721-7310 * Rapid City Growth
 Management Department
 FAX: 605/721-7313 * E-MAIL: Gary@RennerAssoc.com

RECEIVED