



CENTERLINE

MEMORANDUM

520 Kansas City Street ♦ Suite 307 Rapid City, South Dakota 57701
PH: 605-341-3193 FX: 605-341-3358 centrline@aol.com

TO: City Council
FROM: Lawrence M. Kostaneski, PE
DATE: December 23, 2008

RE: Skyline Village: Request for Public Utility Easement

CC: Mr. Phil Olsen, President, Olsen Development Company

Dear Mayor and Council:

This is a request to grant a public utility easement and to authorize the Mayor and Finance Officer to sign the appropriate easement agreements.

The easement is generally located across a city fire department parking lot and adjacent land located at 1930 Promise Rd., more specifically identified in the attached documents.

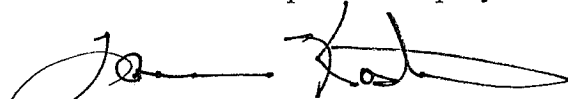
Locating a sewer main north of the parking lot encounters treacherous terrain, making both construction and long term access undesirable.

A lift station is expensive and unnecessary.

Any disruption to fire department administrative functions will be short lived and can be managed with appropriate language in the easement agreement.

Please call with questions. Thanks.

For Olsen Development Company



Lawrence M. Kostaneski, PE

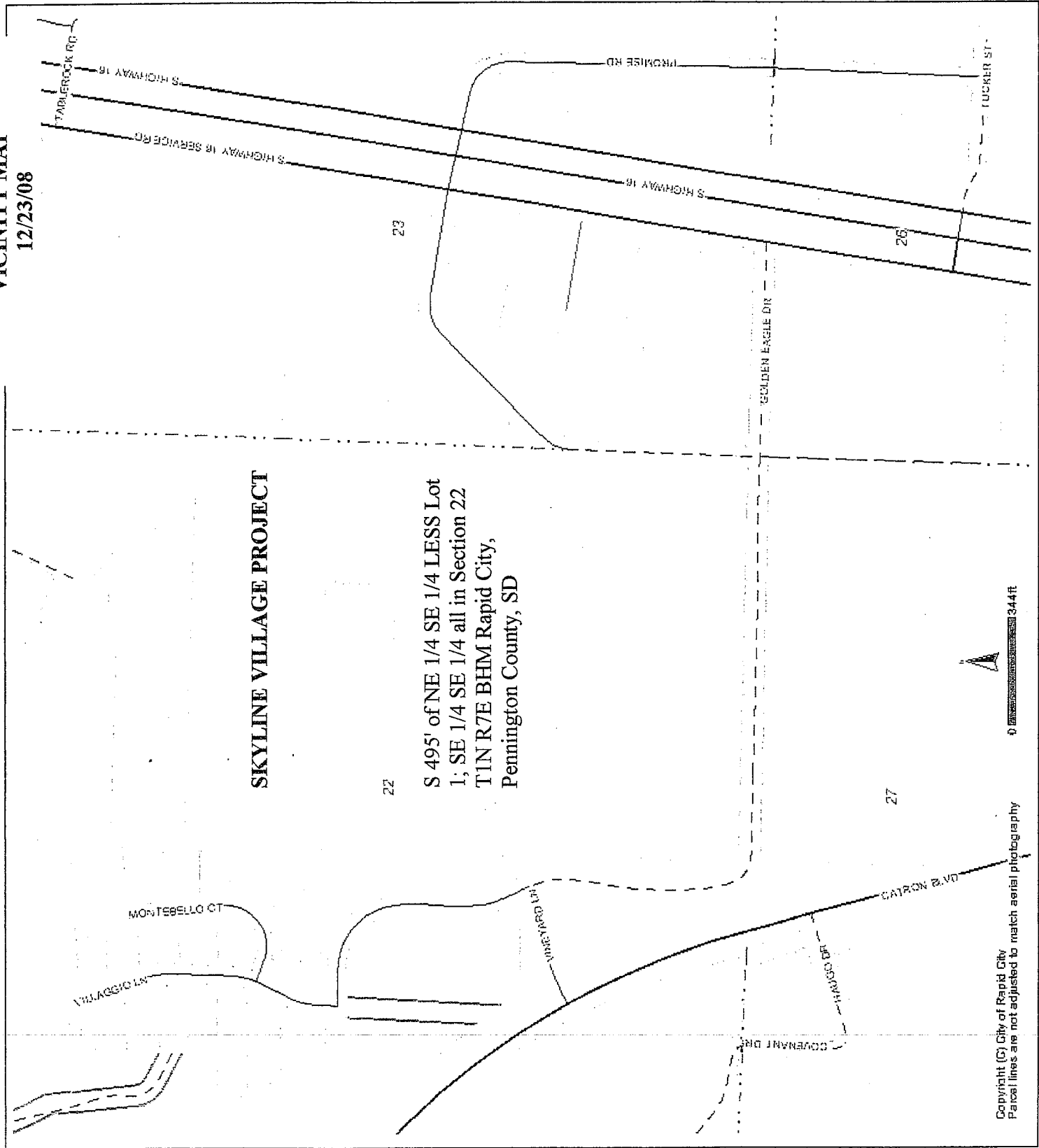
RECEIVED

DEC 23 2008

Man... ..

**SKYLINE VILLAGE PROJECT
VICINITY MAP**

12/23/08



SKYLINE VILLAGE PROJECT

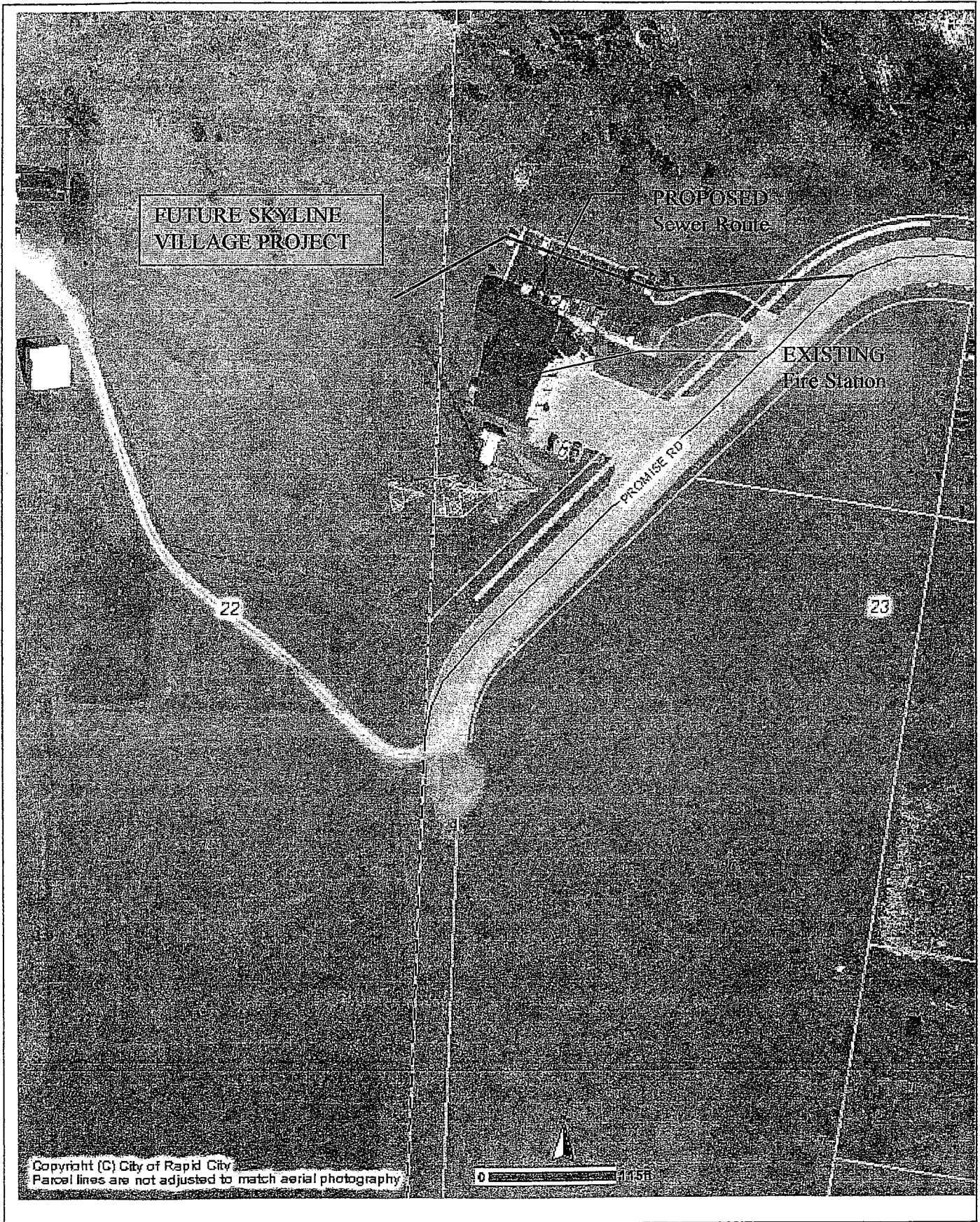
S 495' of NE 1/4 SE 1/4 LESS Lot
1; SE 1/4 SE 1/4 all in Section 22
T1N R7E BHM Rapid City,
Pennington County, SD

Copyright (C) City of Rapid City
Parcel lines are not adjusted to match aerial photography



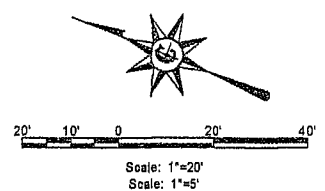
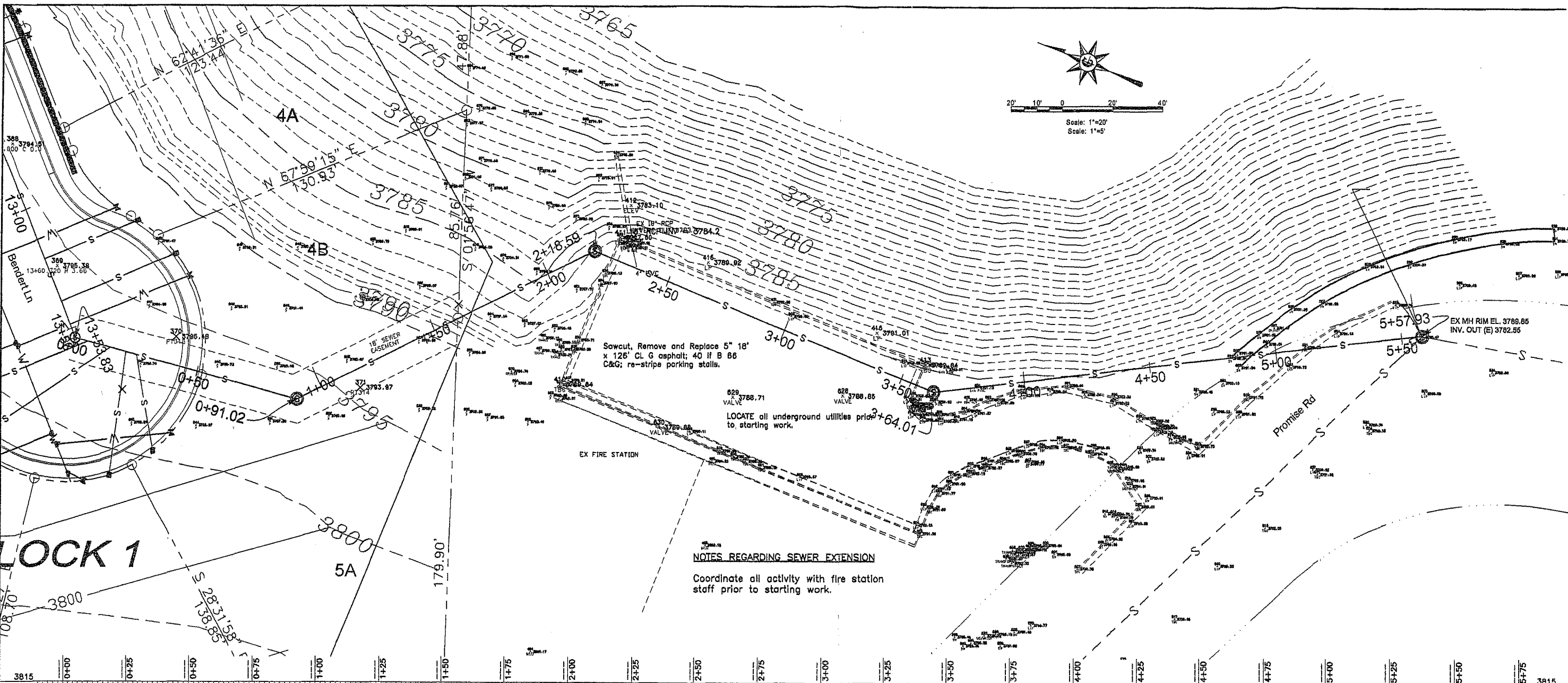
0 344ft

Skyline Village
Public Utility Easement Request
12/23/08



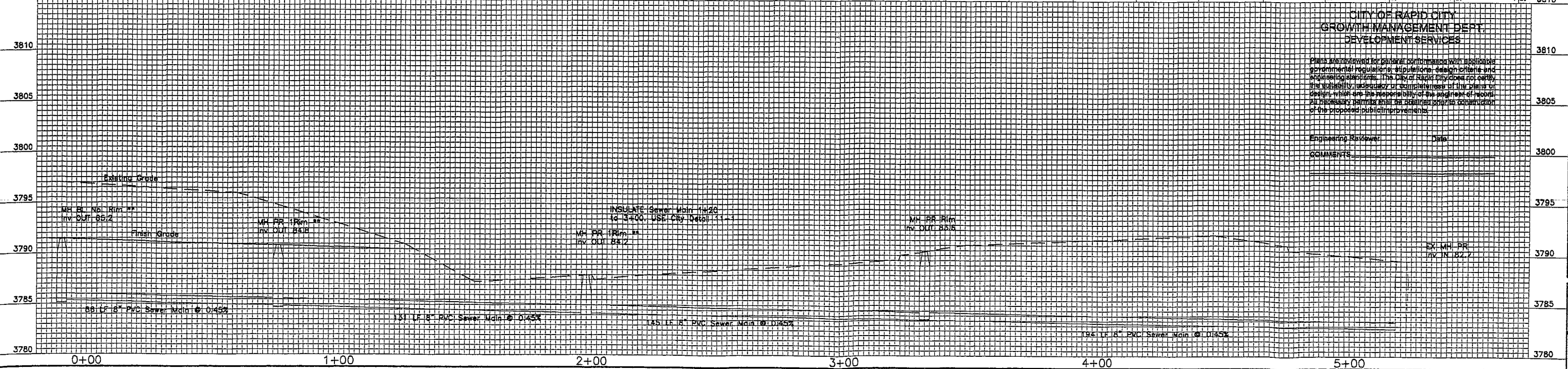
Copyright (C) City of Rapid City
Parcel lines are not adjusted to match aerial photography

0 115ft



NOTES REGARDING SEWER EXTENSION

Coordinate all activity with fire station staff prior to starting work.



CITY OF RAPID CITY
GROWTH MANAGEMENT DEPT.
DEVELOPMENT SERVICES

Plans are prepared for general information only. They are not intended to be used for construction or to determine the exact location of any utility. The City of Rapid City does not warrant the accuracy or completeness of the information shown on these plans. The user of these plans shall be responsible for the accuracy of the information shown on these plans.

Engineering Reviewer: _____ Date: _____

COMMENTS: _____

CENTERLINE
520 Kansas City Street Suite 307
Rapid City, South Dakota 57701
Phone: (605) 341-3193 Fax: (605) 341-3358
centerline@rcd.com

Profile of
Bendert Lane

SKYLINE VILLAGE

PROJECT NO.: 08_125
FILE NO.: 08012
DESIGN BY: LMK
DRAWN BY: MLB
CHECKED BY: LMK
DATE: 12/01/08

C7
OF X