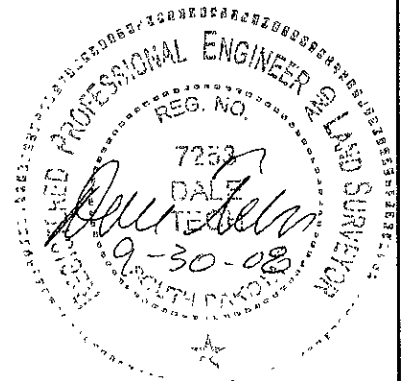
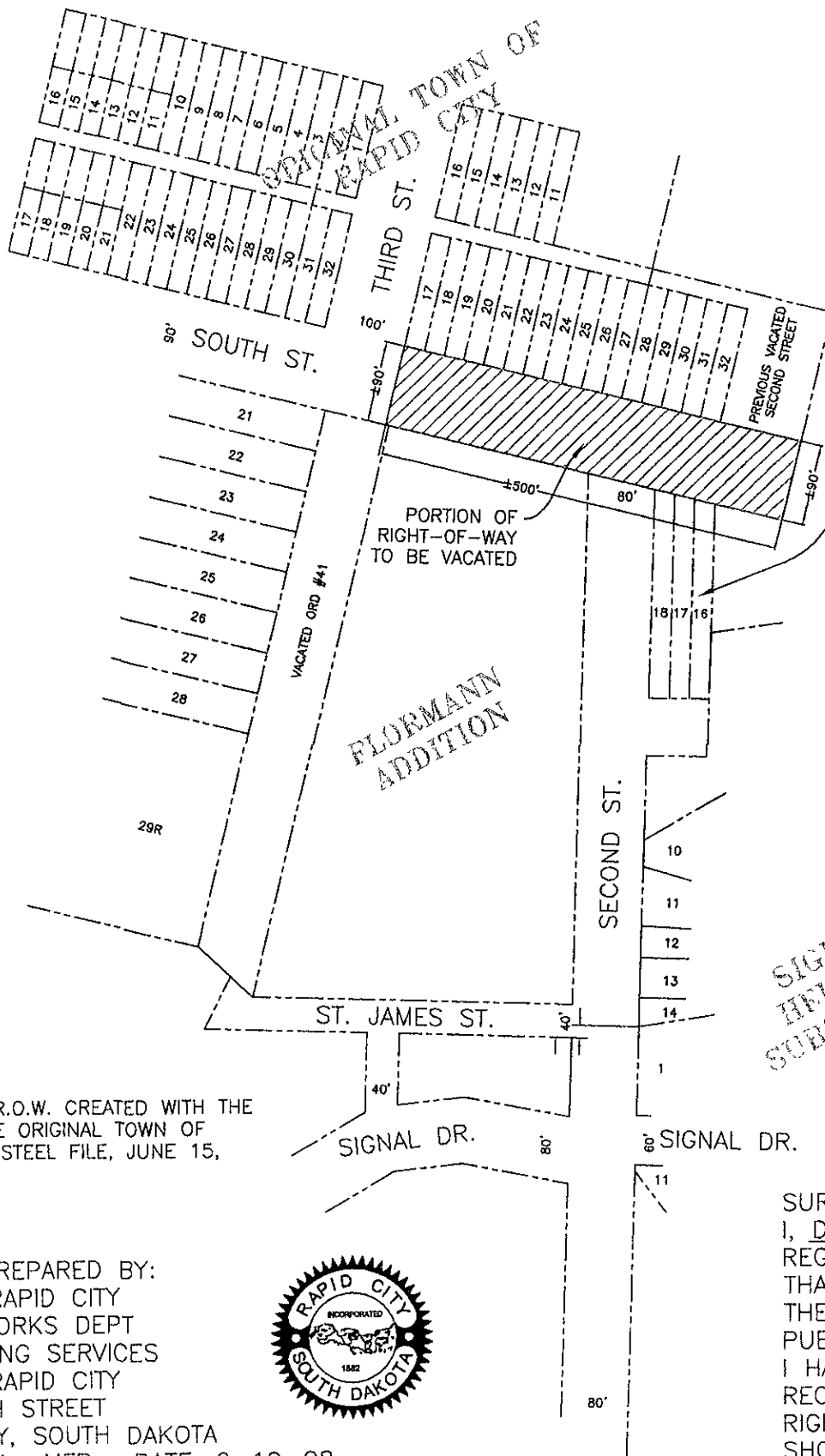


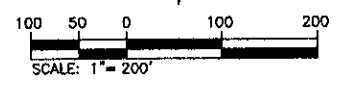
# EXHIBIT A

DESCRIPTION OF DEDICATED RIGHT OF WAY TO BE VACATED:  
THE ENTIRE SOUTH STREET RIGHT OF WAY LOCATED SOUTH OF BLOCK 128 OF THE ORIGINAL TOWN OF RAPID CITY AND SOUTH OF THE PREVIOUSLY VACATED PORTION OF SECOND STREET RIGHT OF WAY LOCATED ON THE EAST SIDE OF BLOCK 128 OF THE ORIGINAL TOWN OF RAPID CITY LOCATED IN SECTION 1, T1N, R7E, B.H.M., RAPID CITY, PENNINGTON COUNTY, SOUTH DAKOTA.



BLOCK 5  
KELLOGG  
ADDITION

SIGNAL  
HEIGHTS  
SUBDIVISION



SOUTH ST. R.O.W. CREATED WITH THE PLAT OF THE ORIGINAL TOWN OF RAPID CITY, STEEL FILE, JUNE 15, 1877.

EXHIBIT PREPARED BY:  
CITY OF RAPID CITY  
PUBLIC WORKS DEPT  
ENGINEERING SERVICES  
CITY OF RAPID CITY  
300 SIXTH STREET  
RAPID CITY, SOUTH DAKOTA  
DRAWN BY: MFP DATE: 9-19-08  
CHECKED BY: DET DATE: 9-30-08

SURVEYORS CERTIFICATE:  
I, DALE TECH, A REGISTERED LAND SURVEYOR THAT AT THE DIRECTION OF THE CITY OF RAPID CITY PUBLIC WORKS DEPARTMENT, I HAVE PREPARED FROM RECORD DOCUMENTS THE RIGHT-OF-WAY VACATIONS SHOWN HEREON.