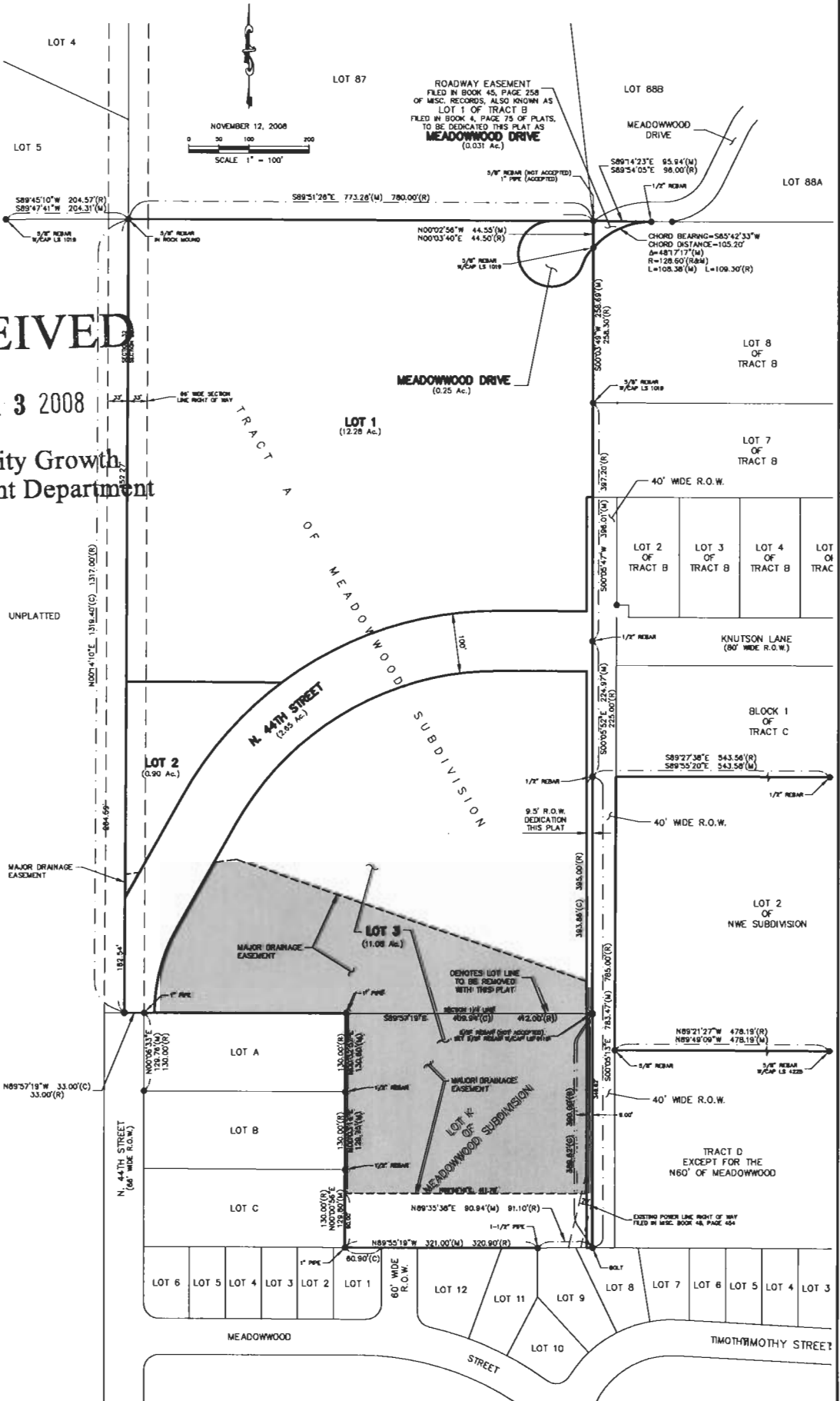


Plat of Lots 1 through 3 of GFP Subdivision and dedicated public right of way shown as Meadowwood Drive and N. 44th Street formerly Tract A and Lot 1 of Tract B all of Meadowwood Subdivision located in SW1/4 of NW1/4 of Section 33, T2N, R7E, BHM, and formerly Lot K of Meadowwood Subdivision located in NW1/4 of SW1/4 of Section 33, T2N, R7E, BHM, Rapid City, Pennington County, South Dakota.

Prepared by:
 FMG Engineering
 3700 Sturgis Road
 Rapid City, SD 57702
 605/342-4105



RECEIVED

NOV 13 2008

Rapid City Growth Management Department

H:\9087 SDGF&P\dwg\9087\Plat\jerrytest.dwg, Plat, 11/13/2008 1:32:33 PM