

Preliminary plat of Lots 1R, 2R, 4R, 5R, 6R, 7R, 9R, 12R, 13R, 16R, 17R, 18R, 19R, 20R, and 21R of Block 4, H & H Estates Subdivision

Formerly Lot 1, Lot 2, Lot 4, Lot 5, Lot 6, Lot 7, Lot 9, Lot 12, Lot 13, Lot 16, Lot 17, Lot 18, Lot 19, Lot 20, and Lot 4a of Block 4 of H & H Estates Subdivision, all located in the NW 1/4 SE 1/4 and NE 1/4 SW 1/4 of Section 10, T1N, R8E, B.H.M., Pennington County, South Dakota

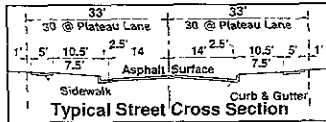


1"=40'
September 2008
Prepared By
Jerry J. Wendland
ANGLE SURVEYS
6909 Ridgewalk Drive
Black Hawk, SD 57118
605-781-5503

RECEIVED
SEP 26 2008
Rapid City Growth Management Department

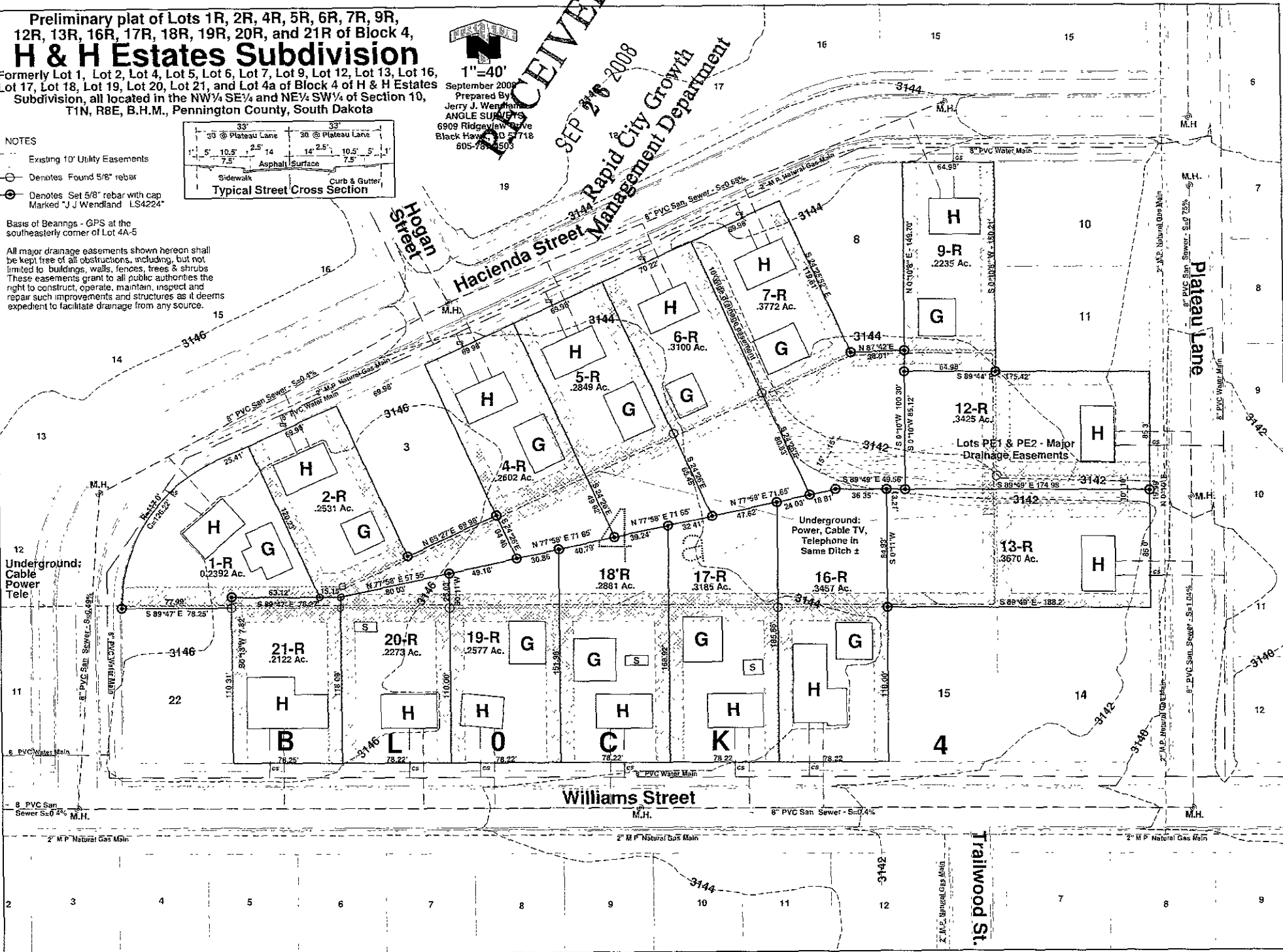
NOTES

- Existing 10' Utility Easements
- Denotes Found 5/8" rebar
- Denotes Set 5/8" rebar with cap Marked "J J Wendland LS4224"



Basis of Bearings - GPS at the southeasterly corner of Lot 4A-5

All major drainage easements shown herein shall be kept free of all obstructions, including, but not limited to buildings, walls, fences, trees & shrubs. These easements grant to all public authorities the right to construct, operate, maintain, inspect and repair such improvements and structures as it deems expedient to facilitate drainage from any source.



Underground: Cable Power Tele

Underground: Power, Cable TV, Telephone in Same Ditch ±