

RECEIVED

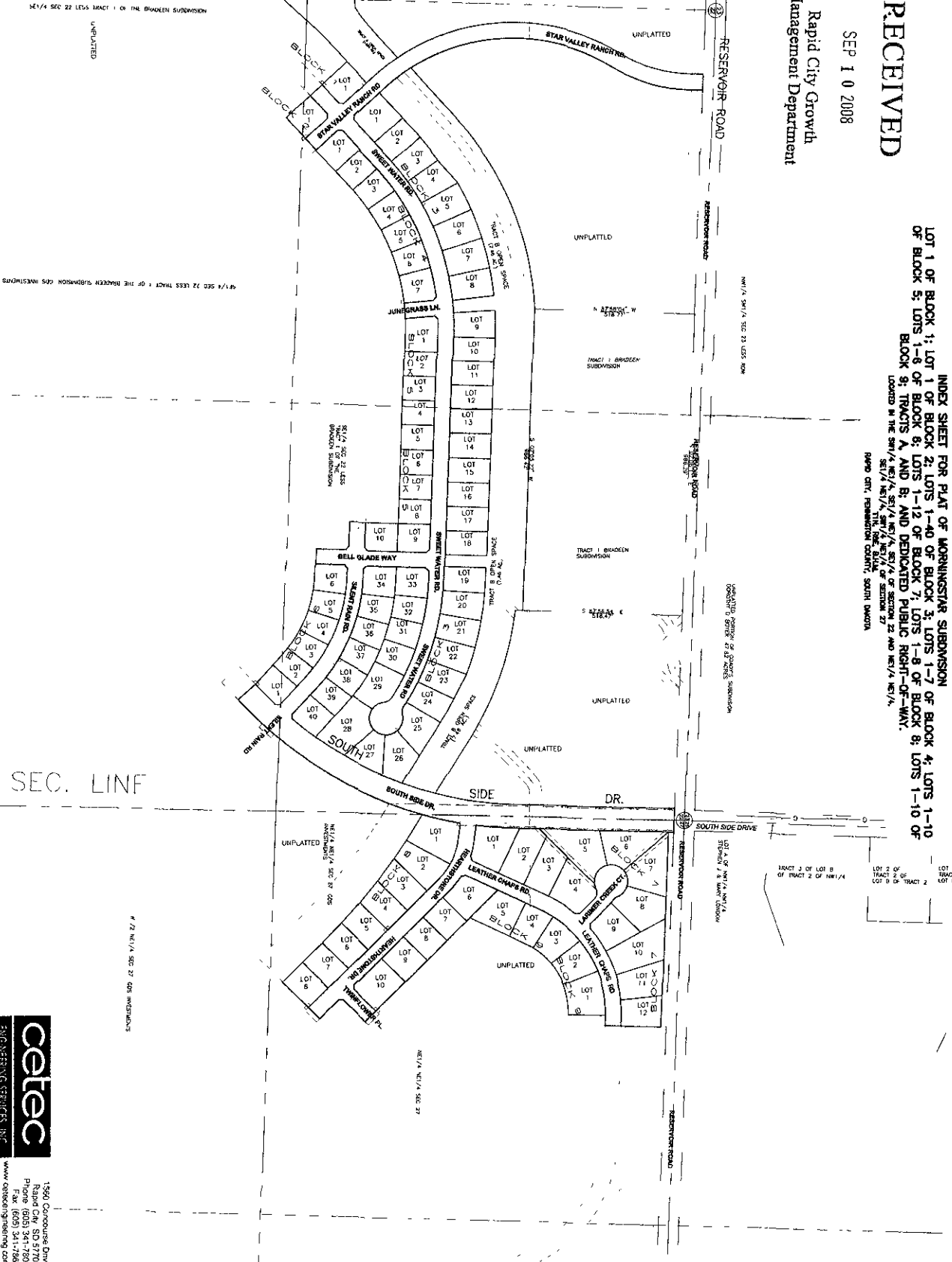
SEP 1 0 2008

Rapid City Growth Management Department

INDEX SHEET FOR PLAT OF MORNINGSTAR SUBDIVISION
LOT 1 OF BLOCK 1; LOT 1 OF BLOCK 2; LOTS 1-40 OF BLOCK 3; LOTS 1-7 OF BLOCK 4; LOTS 1-10 OF BLOCK 5; LOTS 1-8 OF BLOCK 6; LOTS 1-12 OF BLOCK 7; LOTS 1-8 OF BLOCK 8; LOTS 1-10 OF BLOCK 9; TRACTS A AND B; AND DEDICATED PUBLIC RIGHT-OF-WAY.
LOCATED IN THE SW 1/4 NE 1/4, SE 1/4 NE 1/4, SE 1/4 NE 1/4, SECTION 22 AND NE 1/4 NE 1/4, T1N, 86E, S14W, RAPID CITY, HANBURY COUNTY, SOUTH DAKOTA

1/4 LINE

SEC. LINE



cattec
ENGINEERING SERVICES, INC.

1580 Caspary Drive
Rapid City, SD 57705
Phone: (605) 341-7800
Fax: (605) 341-7864
www.cattecingeering.com
DATE: 9/9/08