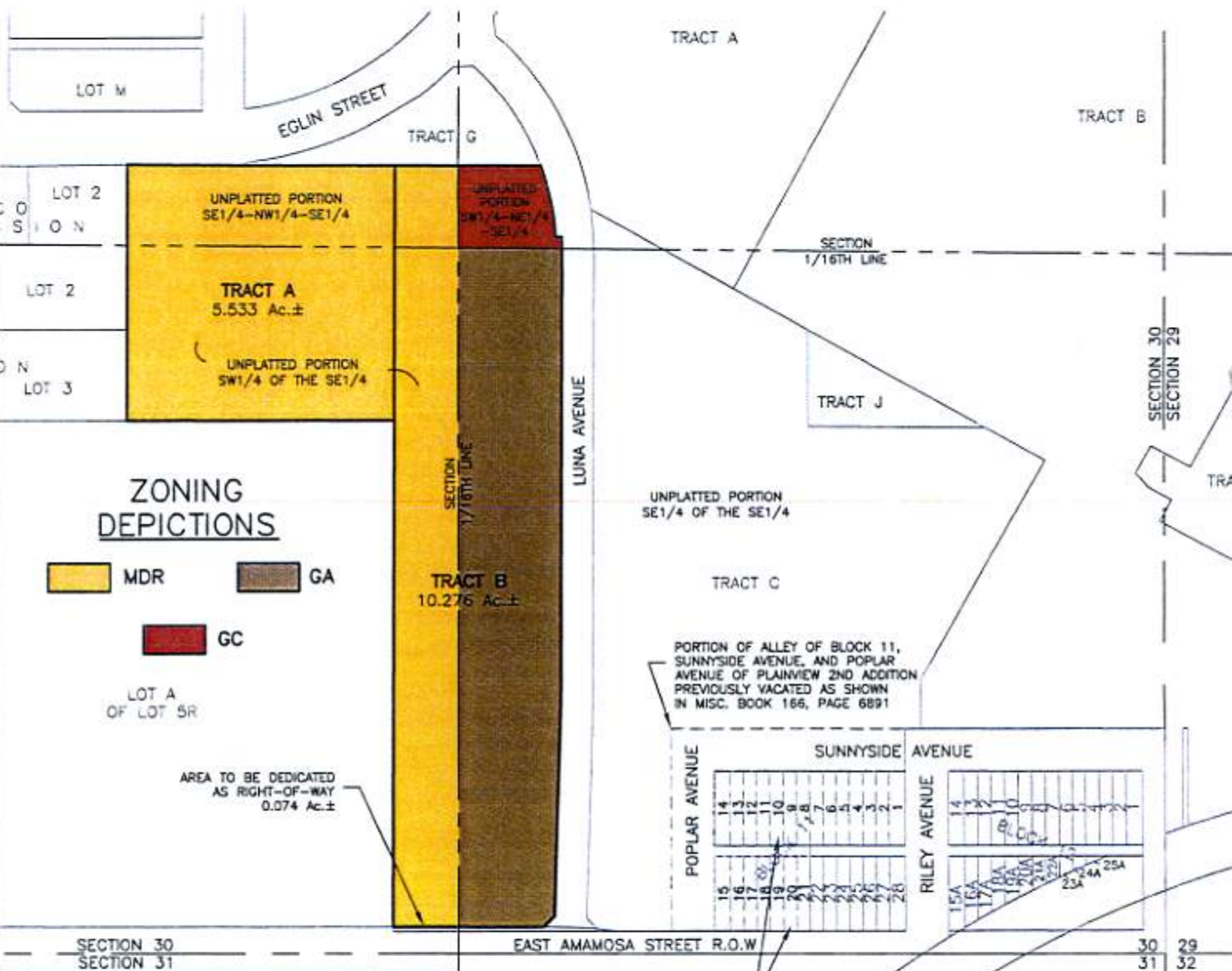


EXISTING ZONING MAP
TRACTS A & B OF RUSHMORE CENTER
 LOCATED IN THE SE1/4
 SECTION 30, T2N, R8E, BHM
 RAPID CITY, PENNINGTON COUNTY, SOUTH DAKOTA



LOTS 1-21 INCLUSIVE OF BLOCK 11, PLAINVIEW 2ND ADDITION PREVIOUSLY VACATED AS SHOWN IN MISC. BOOK 155, PAGE 7155 & MISC. BOOK 159, PAGE 5979

PORTION OF ALLEY OF BLOCK 11, SUNNYSIDE AVENUE, AND POPLAR AVENUE OF PLAINVIEW 2ND ADDITION PREVIOUSLY VACATED AS SHOWN IN MISC. BOOK 166, PAGE 6891

RECEIVED

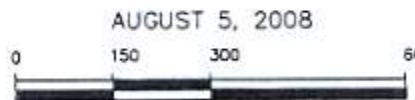
AUG 28 2008

Rapid City Growth Management

Renner & Associates, LLC.

616 Sixth St. • Rapid City, SD 57701 • 605/721-7310
 FAX: 605/721-7313 • E-MAIL: Gary@RennerAssoc.com
 • Spearfish 605/717-0016 •

RAILROAD RIGHT-OF-WAY



AUGUST 5, 2008

SCALE 1" = 300'



CITY HALL 1903