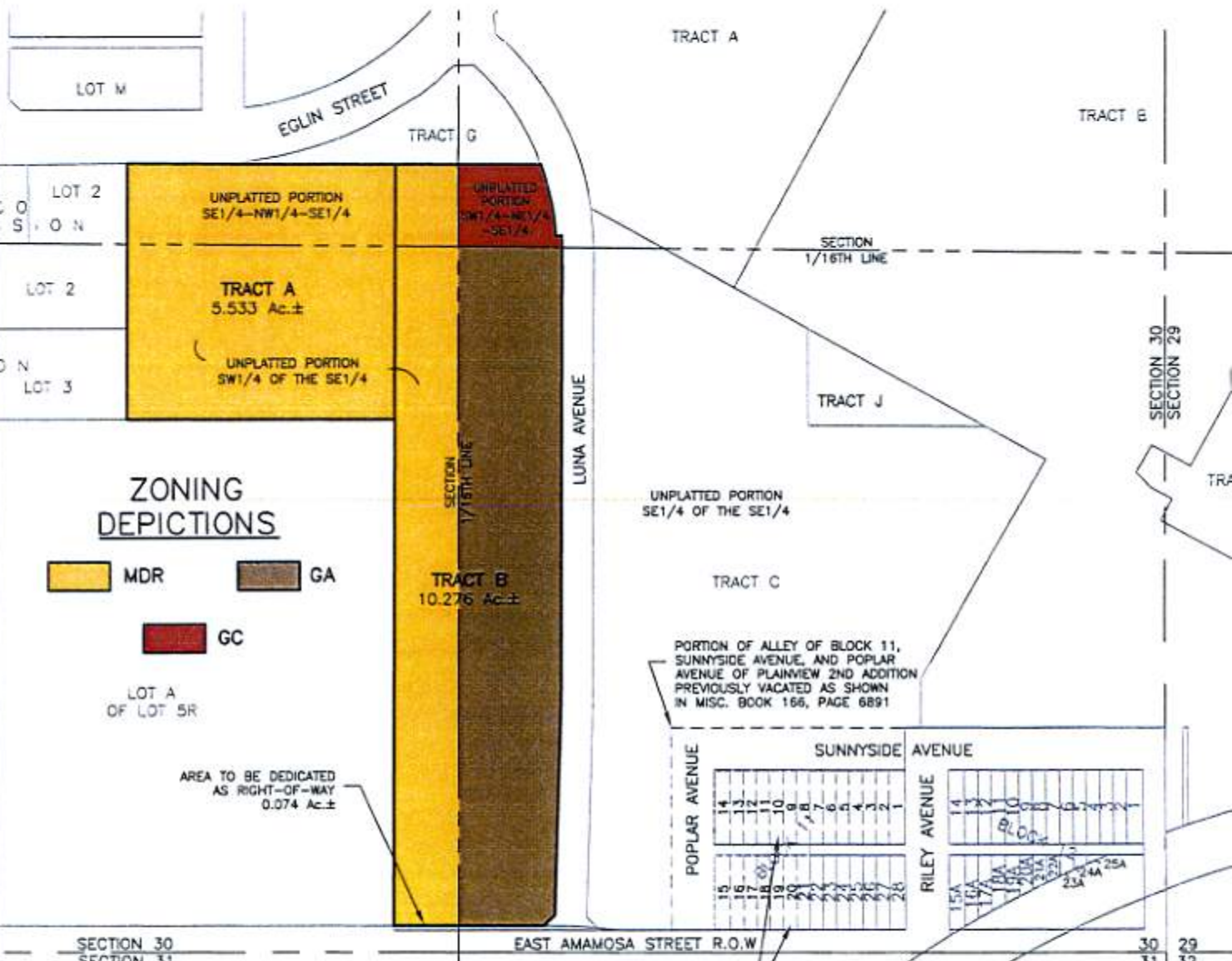


EXISTING ZONING MAP
**TRACTS A & B OF
RUSHMORE CENTER**
LOCATED IN THE SE1/4
SECTION 30, T2N, R8E, BHM
RAPID CITY, PENNINGTON COUNTY, SOUTH DAKOTA



RECEIVED

AUG 28 2008

Rapid City Growth
Management Department

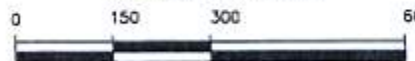
Renner & Associates, LLC.

616 Sixth St. • Rapid City, SD 57701 • 605/721-7310
FAX: 605/721-7313 • E-MAIL: Gary@RennerAssoc.com
• Spearfish 605/717-0016 •

RAILROAD
RIGHT-OF-WAY



AUGUST 5, 2008



SCALE 1" = 300'



CITY HALL 1903

