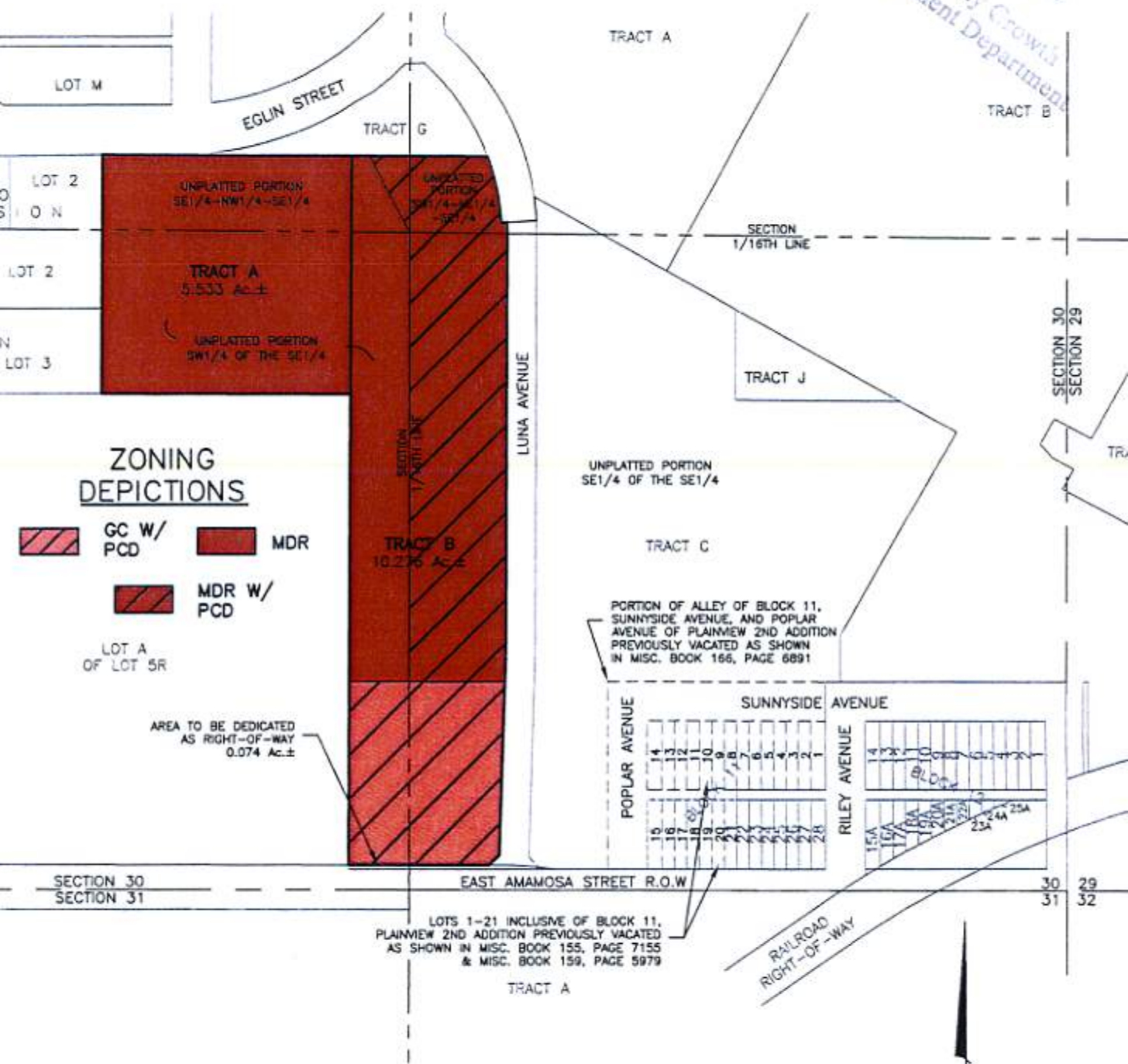


CITY OF RAPID CITY FUTURE LAND USE MAP OF  
**TRACTS A & B OF RUSHMORE CENTER**  
LOCATED IN THE SE1/4  
SECTION 30, T2N, R8E, BHM  
RAPID CITY, PENNINGTON COUNTY, SOUTH DAKOTA

RECEIVED  
AUG 28 2008  
Rapid City Growth  
Management Department



**ZONING DEPICTIONS**

- GC W/PCD
- MDR
- MDR W/PCD

LOT A OF LOT 5R

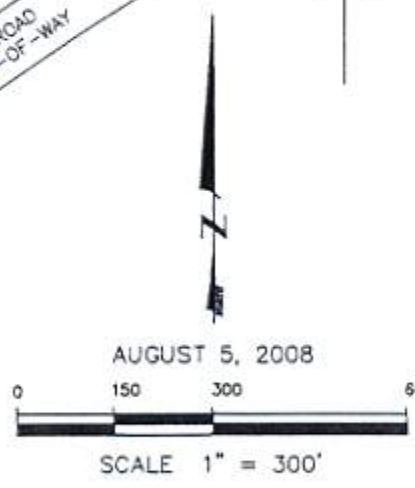
AREA TO BE DEDICATED AS RIGHT-OF-WAY 0.074 Ac.±

LOTS 1-21 INCLUSIVE OF BLOCK 11, PLAINMEW 2ND ADDITION PREVIOUSLY VACATED AS SHOWN IN MISC. BOOK 155, PAGE 7155 & MISC. BOOK 159, PAGE 5979



**Renner & Associates, LLC.**

616 Sixth St. • Rapid City, SD 57701 • 605/721-7310  
FAX: 605/721-7313 • E-MAIL: Gary@RennerAssoc.com  
• Spearfish 605/717-0016 •



AUGUST 5, 2008