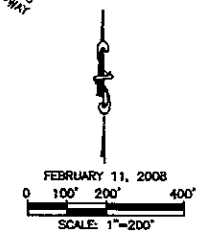
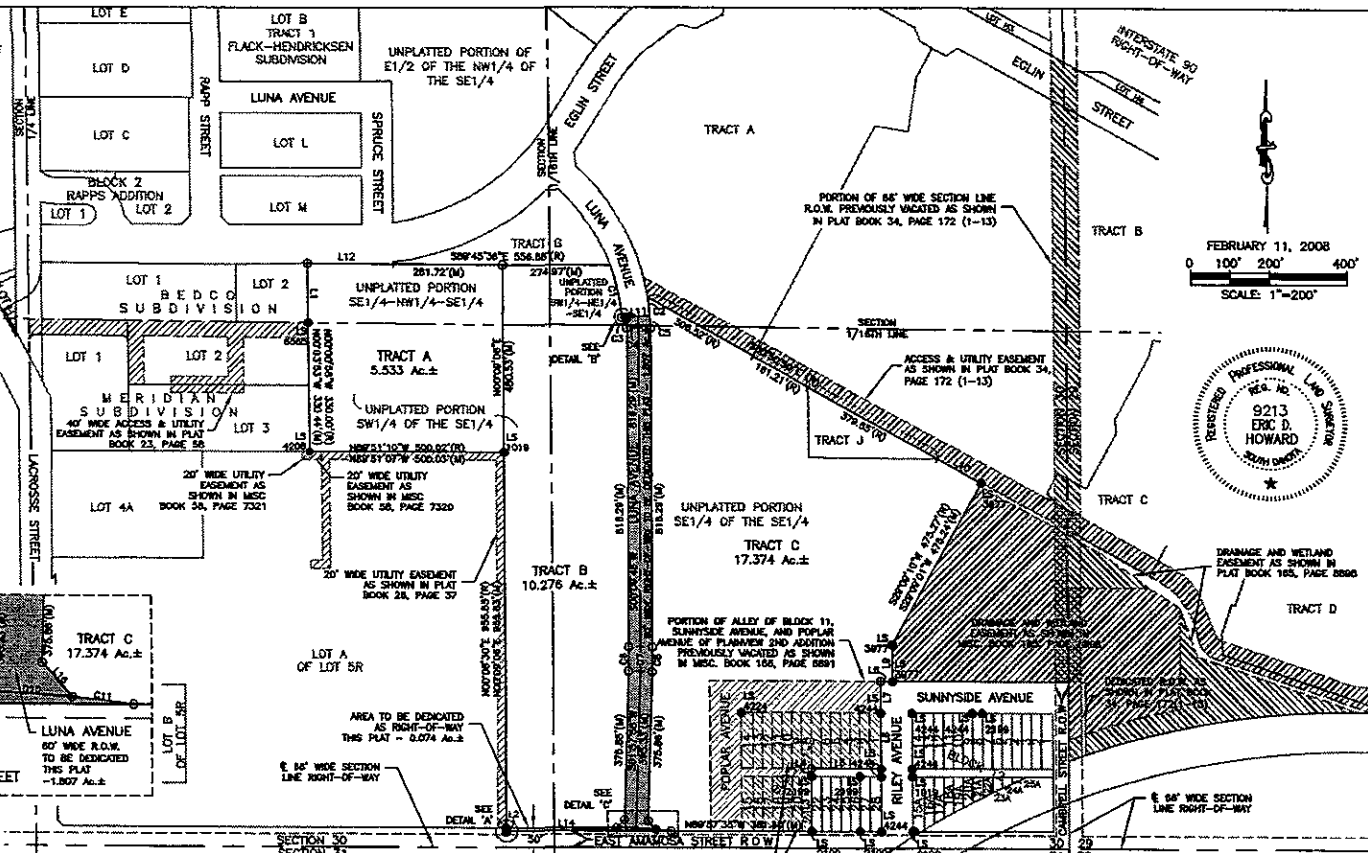
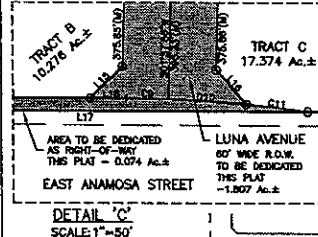
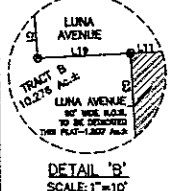
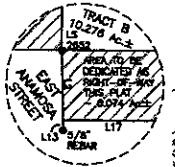


PREPARED BY: RENNER & ASSOCIATES, LLC • 616 SIXTH STREET • RAPID CITY, SD 57701 • 605/721-7310



PLAT OF
**TRACTS A, B, & C OF
 RUSHMORE CENTER,
 LUNA AVENUE AND EAST ANAMOSA STREET**
 AND DEDICATED RIGHT-OF-WAY OF
 (formerly a portion of the SE 1/4 of the NW 1/4 of the SE 1/4,
 a portion of the SW 1/4 of the SE 1/4, and a portion of the SE 1/4 of the SW 1/4
 of the SE 1/4 of the NW 1/4 of the SE 1/4,
 All in Section 30, 72N, RBE, BHM;
 Vacated Lots 1-21, and vacated portion of alley of Block 11,
 Vacated portion of Sunnyside Avenue, and Poplar Avenue,
 and Tract J of Rushmore Crossing)
 LOCATED IN THE SE 1/4 OF SECTION 30, 72N, RBE, BHM
 RAPID CITY, PENNINGTON COUNTY, SOUTH DAKOTA

PREPARED FOR:
 BREW DESIGN INTERNATIONAL, INC
 22810 PINEWOOD DR
 SIOUX FALLS, SD 57101
 (605) 344-0636
 PAGE 1 OF 2

LINE	LENGTH	BEARING	1850	30.00'	N89°50'58"W
L10	148.88'	N00°11'00"W	1850	32.20'	S00°07'20"W
L11	151.73'	N00°08'27"W	1850	22.71'	S00°08'44"W
L12	8.78'	N00°14'24"W	1100	127.34'	S60°30'50"E
L13	140.48'	N00°14'24"W	1100	127.58'	S89°50'08"E
L14	140.32'	S00°04'53"W	1100	60.00'	N88°44'20"E
L15	20.00'	N00°00'00"W	1120	218.98'	S89°32'47"E
L16	20.00'	S00°08'40"W	1130	1.23'	N00°14'24"W
L17	180.00'	N00°00'00"W	1140	282.48'	N89°30'44"W
L18	178.24'	N89°32'39"W	1150	28.23'	S44°53'36"E
L19	140.00'	N00°00'00"W	1160	28.92'	S41°40'43"E
L20	139.85'	S00°07'37"W	1170	421.31'	S89°32'35"W
L21	80.00'	N00°00'00"W	1180	23.31'	N89°30'44"W
L22	80.00'	S00°08'36"W	1190	12.00'	N88°44'20"E

LINE	LENGTH	BEARING	1850	30.00'	N89°50'58"W
L10	148.88'	N00°11'00"W	1850	32.20'	S00°07'20"W
L11	151.73'	N00°08'27"W	1850	22.71'	S00°08'44"W
L12	8.78'	N00°14'24"W	1100	127.34'	S60°30'50"E
L13	140.48'	N00°14'24"W	1100	127.58'	S89°50'08"E
L14	140.32'	S00°04'53"W	1100	60.00'	N88°44'20"E
L15	20.00'	N00°00'00"W	1120	218.98'	S89°32'47"E
L16	20.00'	S00°08'40"W	1130	1.23'	N00°14'24"W
L17	180.00'	N00°00'00"W	1140	282.48'	N89°30'44"W
L18	178.24'	N89°32'39"W	1150	28.23'	S44°53'36"E
L19	140.00'	N00°00'00"W	1160	28.92'	S41°40'43"E
L20	139.85'	S00°07'37"W	1170	421.31'	S89°32'35"W
L21	80.00'	N00°00'00"W	1180	23.31'	N89°30'44"W
L22	80.00'	S00°08'36"W	1190	12.00'	N88°44'20"E

CURVE	LENGTH	RADIUS	DELTA	CHORD BEARING	CHORD DISTANCE
C1(R)	137.80	464.00	17°00'56"	S11°46'04"E	137.30
C2(R)	48.41	838.00	2°10'30"	S00°50'28"E	48.40
C3(R)	28.44	478.00	3°22'22"	S01°23'17"E	28.43
C4(O)	30.23	508.00	3°28'22"	S01°32'53"E	30.22
C5(O)	32.02	538.00	3°28'22"	S01°32'53"E	32.02
C6(O)	61.97	1076.00	7°48'00"	S01°32'53"E	61.97
C7(O)	62.91	2253.00	1°48'00"	S01°03'36"E	62.87
C8(O)	63.88	2030.00	1°48'00"	S01°03'36"E	63.88
C9(O)	28.68	844.00	7°48'44"	N88°36'22"W	28.69
C10(O)	50.61	844.00	3°28'41"	N88°20'10"W	50.60
C11(O)	38.28	844.00	2°38'54"	N88°18'22"W	38.28

NOTES:
 ● DENOTES SET 5/8" REBAR WITH SURVEY CAP MARKED "POWER - ASSOC. 282"
 ○ DENOTES FOUND SURVEY MONUMENT
 ○ DENOTES SET 5/8" REBAR WITH NO CAP FOR A.O.M. P.C.'S & P.T.S.
 (R) DENOTES RECORDED IN PREVIOUS PLAT OR DESCRIPTION
 (O) DENOTES MEASURED IN THIS SURVEY
 BASIS OF BEARINGS: GEODETIC NORTH AS DETERMINED BY GLOBAL POSITIONING SYSTEM: (GPS)

UTILITY AND MINOR DRAINAGE EASEMENTS: 6" WIDE ON THE INTERIOR SIDES OF ALL LOT LINES AND RIGHT-OF-WAY TOLERANCES: THESE MAJOR DRAINAGE EASEMENTS ARE LOCATED:
 ANY MAJOR DRAINAGE EASEMENT SHOWN HEREON SHALL BE KEPT FREE OF ALL OBSTRUCTIONS, INCLUDING BUT NOT LIMITED TO BUILDINGS, WALLS, FENCES, HEDGES, TREES AND SHRUBS. THESE EASEMENTS GRANT TO ALL PUBLIC AUTHORITIES THE RIGHT TO CONSTRUCT, OPERATE, MAINTAIN, REPAIR AND REPAIR SUCH IMPROVEMENTS AND STRUCTURES AS IT DEEMES NECESSARY TO FACILITATE DRAINAGE FROM ANY SOURCE.

RECORDED