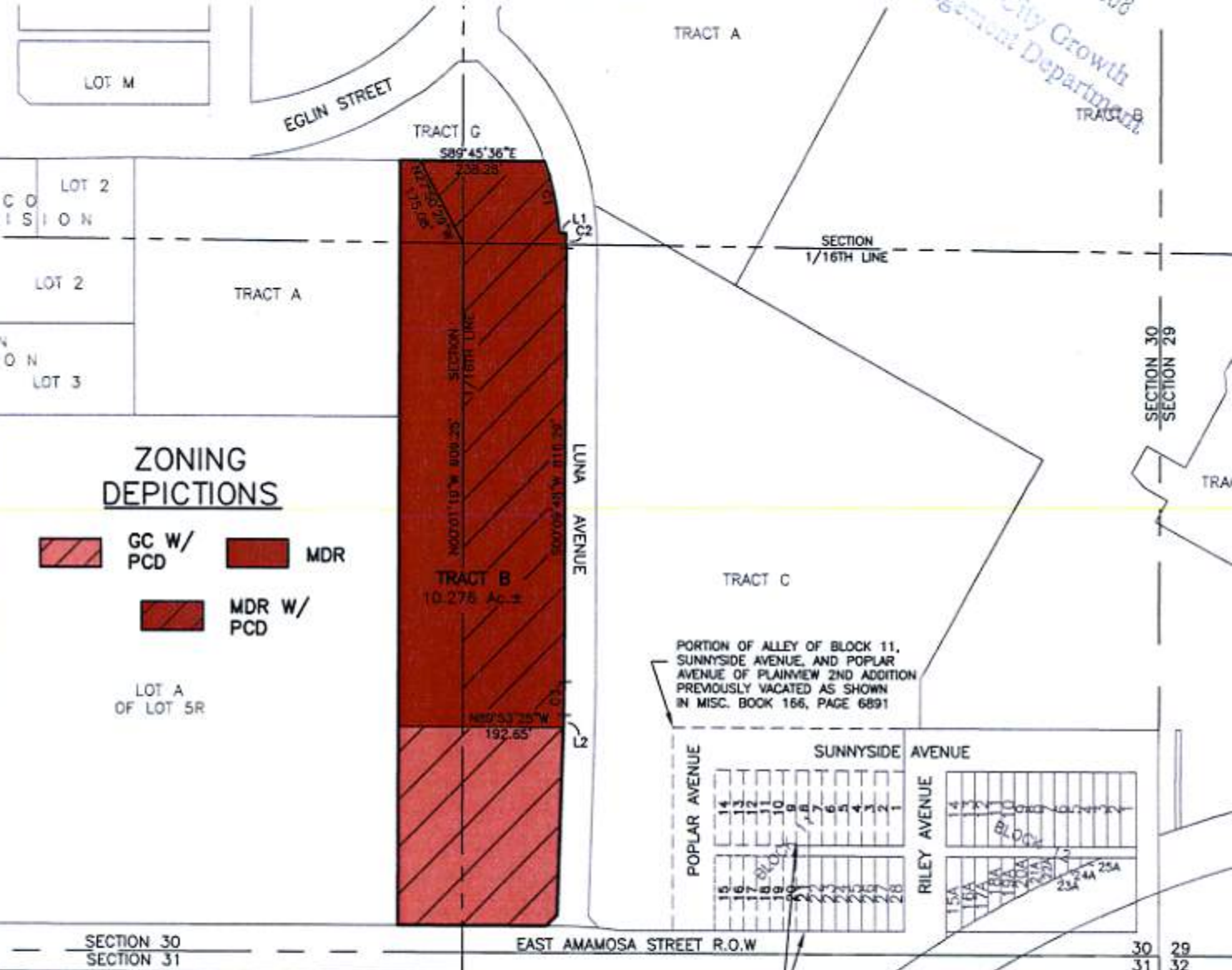


**TRACT B
RUSHMORE CENTER**

LOCATED IN THE SE1/4
SECTION 30, T2N, R8E, BHM
RAPID CITY, PENNINGTON COUNTY, SOUTH DAKOTA

RECEIVED
AUG 28 2008
Rapid City Growth
Management Department



**ZONING
DEPICTIONS**

- GC W/PCD
- MDR
- MDR W/PCD

LOT A
OF LOT 5R

PORTION OF ALLEY OF BLOCK 11,
SUNNYSIDE AVENUE, AND POPLAR
AVENUE OF PLAINVIEW 2ND ADDITION
PREVIOUSLY VACATED AS SHOWN
IN MISC. BOOK 166, PAGE 6891

SECTION 30
SECTION 31

EAST AMAMOSA STREET R.O.W

LOTS 1-21 INCLUSIVE OF BLOCK 11,
PLAINVIEW 2ND ADDITION PREVIOUSLY VACATED
AS SHOWN IN MISC. BOOK 155, PAGE 7155
& MISC. BOOK 159, PAGE 5979

LINE	LENGTH	BEARING
L1	12.00'	N86°44'26"E
L2	23.04'	S01°57'56"W

CURVE	LENGTH	RADIUS	DELTA	CHORD BEARING	CHORD DISTANCE
C1	137.80	464.00	17°00'58"	S11°46'03"E	137.30
C2	28.44	476.00	3°25'22"	S01°32'53"E	28.43
C3	61.97	1970.00	1°48'09"	S01°03'52"W	61.97



CITY HALL 1903

Renner & Associates, LLC.

616 Sixth St. • Rapid City, SD 57701 • 605/721-7310
FAX: 605/721-7313 • E-MAIL: Gory@RennerAssoc.com
• Spearfish 605/717-0016 •

RAILROAD
RIGHT-OF-WAY



AUGUST 19, 2008



SCALE 1" = 300'