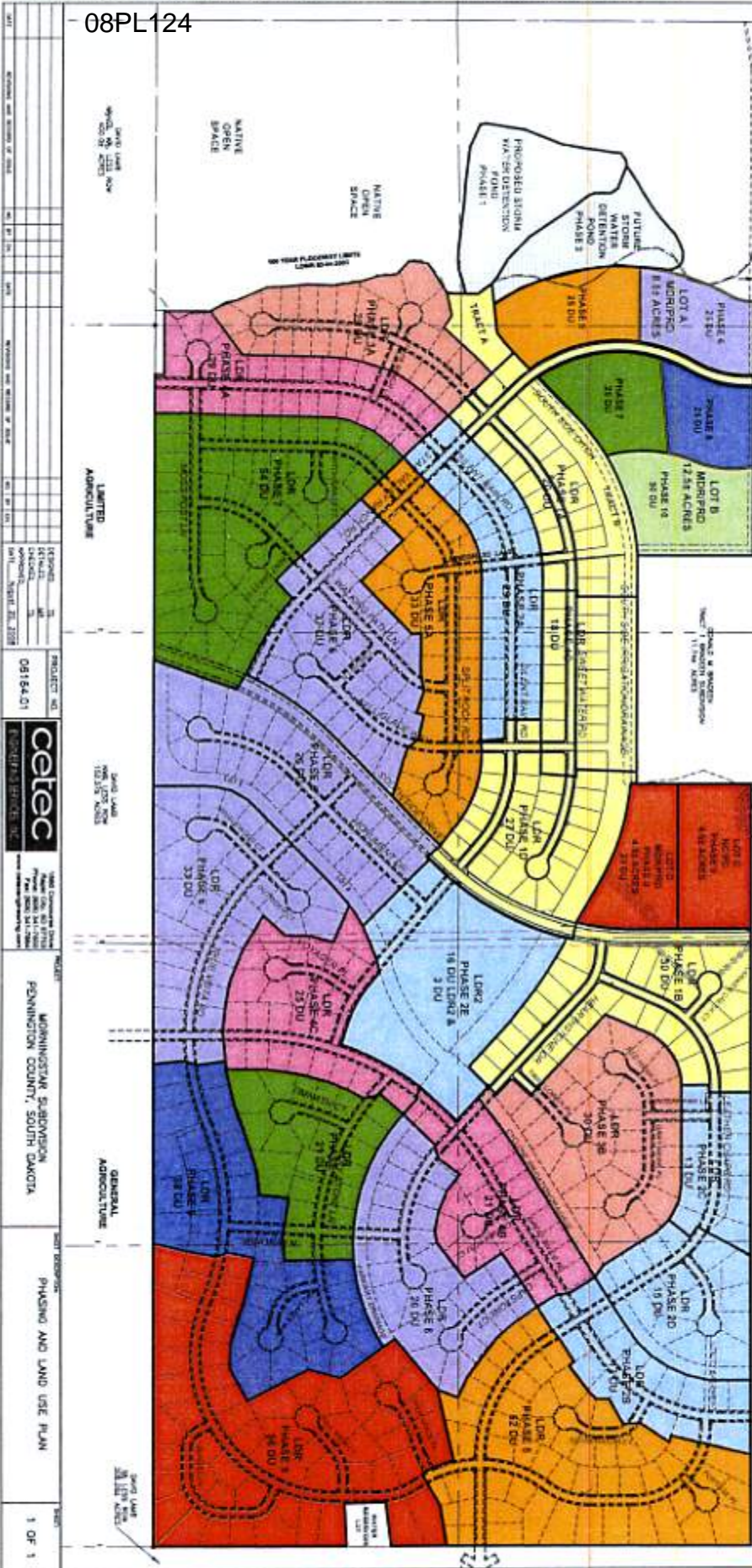


08PL124



**PHASING KEY**

Phase 1	Phase 8
Phase 2	Phase 9
Phase 3	Phase 10
Phase 4	
Phase 5	
Phase 6	
Phase 7	

**LAND USE KEY**

Symbol	Description	Area (Ac)	Units
Single Yellow	Single Family Residential	57.0 AC	144 DU
Double Yellow	Medium Density Residential	57.0 AC	144 DU
Green	Neighborhood Commercial	4.58 AC	N/A
Blue	Light Medium Density	189 AC	181 DU
Light Blue	Light Medium Density	19 AC	18 DU
Dark Blue	Light Medium Density	88 AC	N/A
Light Green	Open Space/Agriculture	87 AC	N/A
Dark Green	Open Space/Agriculture	280 AC	281 DU

PHASING  
 THE SUBDIVISION WILL BE PHASING IN APPROXIMATELY 10 OR MORE PHASING PHASES. THE PHASING AND NUMBER OF LOTS WILL BE DETERMINED BY THE SUBDIVISION ENGINEER AND SHALL BE SUBJECT TO BE COMPLETED IN 3-10 YEARS.

**LEGEND**

---	SECTIONLINE
---	BOUNDARY
---	EXISTING LOT
---	PROPOSED LOT
---	PROPOSED PHASING

RECEIVED

AUG 21 2008

Maplewood Township  
 Planning Department  
 100 2nd Street NW  
 Reservoir Road

PROJECT NO: 08184-01

**catrec** CONSULTING ENGINEERS

1000 2nd Street NW  
 Maplewood, MN 55127  
 Phone: 612.835.1100  
 Fax: 612.835.1101  
 Email: info@catrec.com

MINNESOTA SUBDIVISION  
 PENNINGTON COUNTY, SOUTH DAKOTA

PHASING AND LAND USE PLAN

1 OF 1