

Plat of Lots 1 through 12 of Block 1 and Lots 1 through 7 of Block 2 and Lots 1 through 4 of Block 3 and Lots 1 through 15 of Block 4 and Lots 1 and 31 of Block 5 of Hyland Crossing Subdivision and Dedicated Right-of-Way, (formerly portions of the SE 1/4 of Section 35, T1N, R7E, BEM, Rapid City, Pennington County, South Dakota) located in portions of the SE 1/4 of Section 35, T1N, R7E, BEM, Rapid City, Pennington County, South Dakota

Prepared by:
 Fine Line Surveying & Consulting Engineers, Inc.
 P.O. Box 9154
 Rapid City, SD 57109
 (605) 348-1538
 Project No. 07-01-04

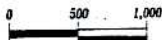
07RD007

Prepared for:
 Dream Design International, Inc.

UTILITY and Minor Drainage Easements 5' on the interior side of all lot lines, except for common wall lot lines.

All Major Drainage Easements Shown Hereon Shall Be Kept Free Of All Obstructions, Including But Not Limited To Buildings, Walls, Fences, Hedges, Trees And Shrubs. These Easements Grant To All Public Authorities The Right To Construct, Operate, Maintain, Inspect, And Repair Such Improvements And Structures As It Deems Expedient To Facilitate Drainage From Any Source.

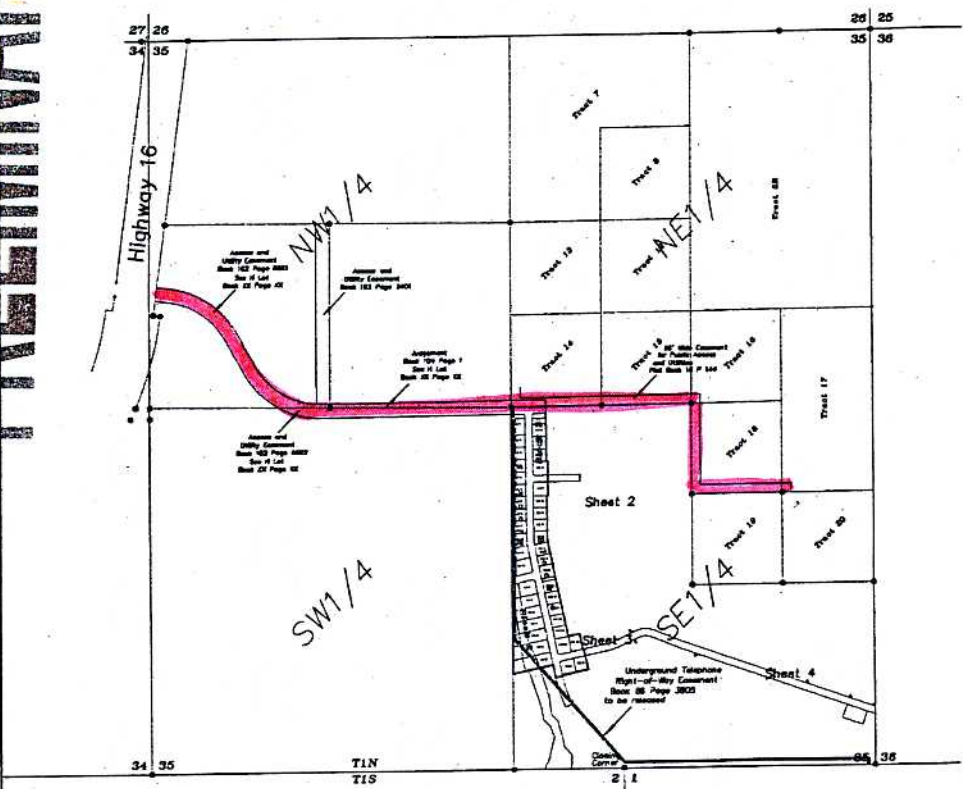
Somerville Trail, Cotton Hill Lane, Betsy Drive, Walnut Lane and Castle Boy Road containing 1.14 Acres more or less, as shown hereon are hereby declared as public right-of-ways. However, such declaration shall not be construed to mean a donation of the fee of said land.



1" = 500'
 Sept. 27, 2007
 Best of Bearings
 GPS Observation

- = Found L.S. 1018 or as noted
- = Found Original Stone or as noted
- ⊙ = Set Marker with oak nailwood "HW" Plus "E565"

PRELIMINARY



RECEIVED

NOV 09 2007

Rapid City Growth
 Management Department