

Plat of Elks Meadows Subdivision - including

- Lots 1 thru 5 of Block 1,
- Lots 1 thru 10 of Block 2,
- Lots 1 thru 4 of Block 3,
- Lots 1 and 26 of Block 6,
- Lot 1 of Block 7,
- Lots 1 and 36 thru 41 of Block 8,
- Lots 1 thru 11 of Block 9,
- Lots 1 thru 13 of Block 10,
- Lots 1 thru 31 of Block 11 and
- Lots 1 thru 23 of Block 12,

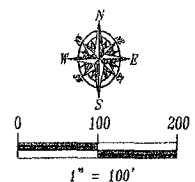
Easements and Dedicated Right-of-Way

located in the E1/2 NE1/4 of Section 21 and the E1/2 SE1/4 of Section 16

T1N, R8E, BHM, Rapid City, Pennington County, South Dakota
Prepared by: Flak Land Surveying & Consulting Engineers, Inc.
P.O. Box 0154
Rapid City, SD 57709
(605) 348-1538
Project # 08-05-07

All major drainage easements shown hereon shall be kept free of all obstructions including but not limited to buildings walls, fences, hedges, trees & shrubs. These easements grant to all public authorities the right to construct, operate, maintain, inspect, and repair such improvements and structures as it deems expedient to facilitate drainage from any source.

NOTE: The rear lot lines in Block 10 and portions of Block 11 represent the centerline of the 40' Wide Cyclone Ditch Easement (labeled CDE). The side lot line annotations are to the Witness Corners located at the edge of the easement.
8' Utility and Minor Drainage Easements on the interior sides of all lot lines

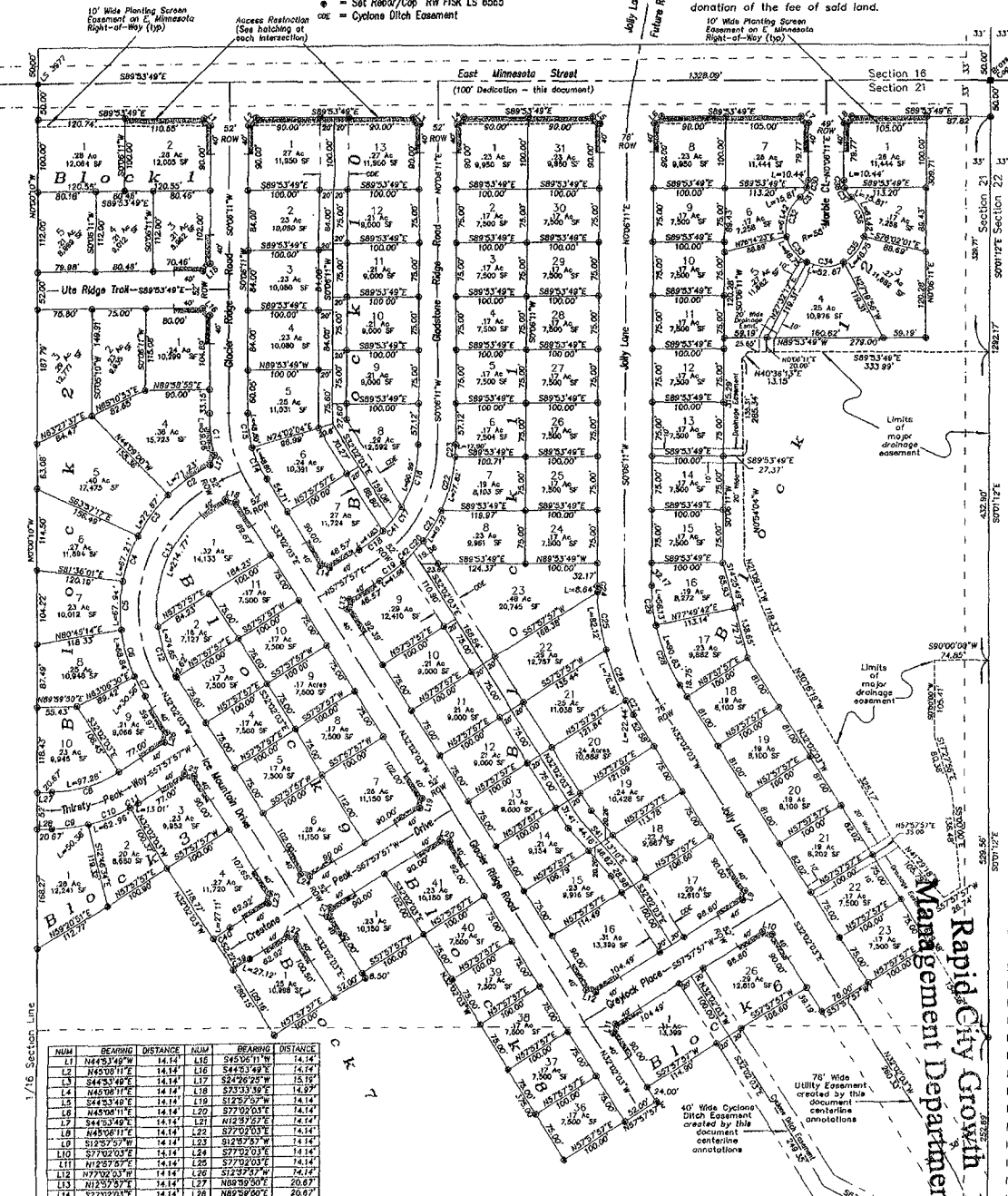


1" = 100'
June 7, 2006
Rev. August 30, 2006
Basis of Bearings Assumed from Previous Surveys and confirmed by Solar Observation

Fast Minnesota Street, Glacier Ridge Road, Gladstones Ridge Road, Jolly Lane, Marble Court, Ice Mountain Drive, Ute Ridge Trail, Thirsty Peak Way, Crestone Peak Drive and Graylock Place, containing 10.66 Acres more or less, as shown hereon are hereby dedicated as public right-of-ways, however, such dedication shall not be construed to mean a donation of the fee of said land.

PRELIMINARY

- Legend
- Found Survey Monument as noted
 - Found Brass Cap (BLM - 1948)
 - Sat. Recon/Top. Wm Flak LS 6565"
 - Cyclone Ditch Easement



NUM	BEARING	DISTANCE	NUM	BEARING	DISTANCE
L1	N44°53'49"E	14.14	L15	S85°53'49"W	14.14
L2	N45°00'11"E	14.14	L16	S44°53'49"E	14.14
L3	S44°53'49"E	14.14	L17	S24°00'25"W	15.19
L4	N45°00'11"E	14.14	L18	S12°55'50"W	14.29
L5	S44°53'49"E	14.14	L19	S12°55'50"W	14.14
L6	N45°00'11"E	14.14	L20	S72°02'03"E	14.14
L7	S44°53'49"E	14.14	L21	N12°59'57"E	14.14
L8	N45°00'11"E	14.14	L22	S72°02'03"E	14.14
L9	S12°55'50"W	14.14	L23	S12°59'57"E	14.14
L10	S72°02'03"E	14.14	L24	S77°02'03"E	14.14
L11	N12°59'57"E	14.14	L25	S77°02'03"E	14.14
L12	N72°02'03"E	14.14	L26	S12°59'57"E	14.14
L13	N12°59'57"E	14.14	L27	N89°39'50"E	20.67
L14	S72°02'03"E	14.14	L28	N89°39'50"E	20.67

NUM	DELTA	ARC	RADIUS	BEARING	DISTANCE	NUM	DELTA	ARC	RADIUS	BEARING	DISTANCE
C1	143°32'11"	59.06	226.00	S72°02'03"E	14.14	C21	19°43'45"	77.82	226.00	N14°39'42"E	17.43
C2	180°33'54"	71.23	226.00	S54°52'47"W	70.94	C22	19°43'45"	77.82	226.00	N22°21'01"E	17.80
C3	182°25'21"	75.67	226.00	S36°50'16"W	73.38	C23	19°43'45"	77.82	226.00	S03°47'42"E	8.84
C4	172°21'01"	67.21	226.00	S18°54'30"W	68.88	C24	19°43'45"	77.82	226.00	S81°01'17"E	81.82
C5	173°33'00"	67.94	226.00	S1°46'36"W	67.69	C25	19°43'45"	77.82	226.00	S91°45'24"E	76.22
C6	172°07'07"	66.84	226.00	S15°33'42"E	68.57	C26	19°43'45"	77.82	226.00	S30°07'57"E	22.43
C7	174°24'00"	70.38	226.00	S28°08'40"E	70.53	C27	19°43'45"	77.82	226.00	S22°08'06"E	45.37
C8	173°03'53"	67.28	226.00	S43°08'33"E	68.01	C28	19°43'45"	77.82	226.00	S82°02'04"E	58.05
C9	124°24'24"	50.36	226.00	N83°38'38"E	50.29	C29	19°43'45"	77.82	226.00	N10°04'15"E	10.39
C10	155°07'38"	62.89	226.00	N69°14'37"E	62.75	C30	19°43'45"	77.82	226.00	N35°07'50"E	18.62
C11	167°25'35"	71.01	226.00	N59°38'52"E	71.07	C31	19°43'45"	77.82	226.00	S18°16'35"E	52.48
C12	221°14'40"	74.62	174.00	S19°44'35"E	74.08	C32	19°43'45"	77.82	226.00	S38°08'40"E	45.38
C13	70°43'31"	214.77	174.00	S24°50'21"W	201.39	C33	19°43'45"	77.82	226.00	S89°53'49"E	50.68
C14	169°04'07"	48.60	174.00	S24°00'00"E	49.64	C34	19°43'45"	77.82	226.00	N18°01'32"E	45.38
C15	161°03'07"	48.80	174.00	S7°59'33"E	48.64	C35	19°43'45"	77.82	226.00	N18°01'32"E	45.38
C16	282°37'36"	90.99	174.00	N15°00'00"E	86.93	C36	19°43'45"	77.82	226.00	S34°53'29"E	18.62
C17	213°48'48"	21.96	174.00	N23°40'43"E	21.64	C37	19°43'45"	77.82	226.00	S9°51'52"E	10.39
C18	324°25'23"	41.87	174.00	N12°54'45"E	41.37	C38	19°43'45"	77.82	226.00	S21°12'24"E	22.10
C19	103°34'51"	41.89	226.00	N52°43'05"E	41.60	C39	19°43'45"	77.82	226.00	S55°35'05"E	27.10
C20	52°04'48"	21.69	226.00	N39°31'16"E	21.08	C40	19°43'45"	77.82	226.00	S40°44'35"E	20.94
C21	122°28'39"	49.22	226.00	N30°36'32"E	49.12	C41	19°43'45"	77.82	226.00	S14°47'57"E	20.94

RECEIVED

AUG 31 2006