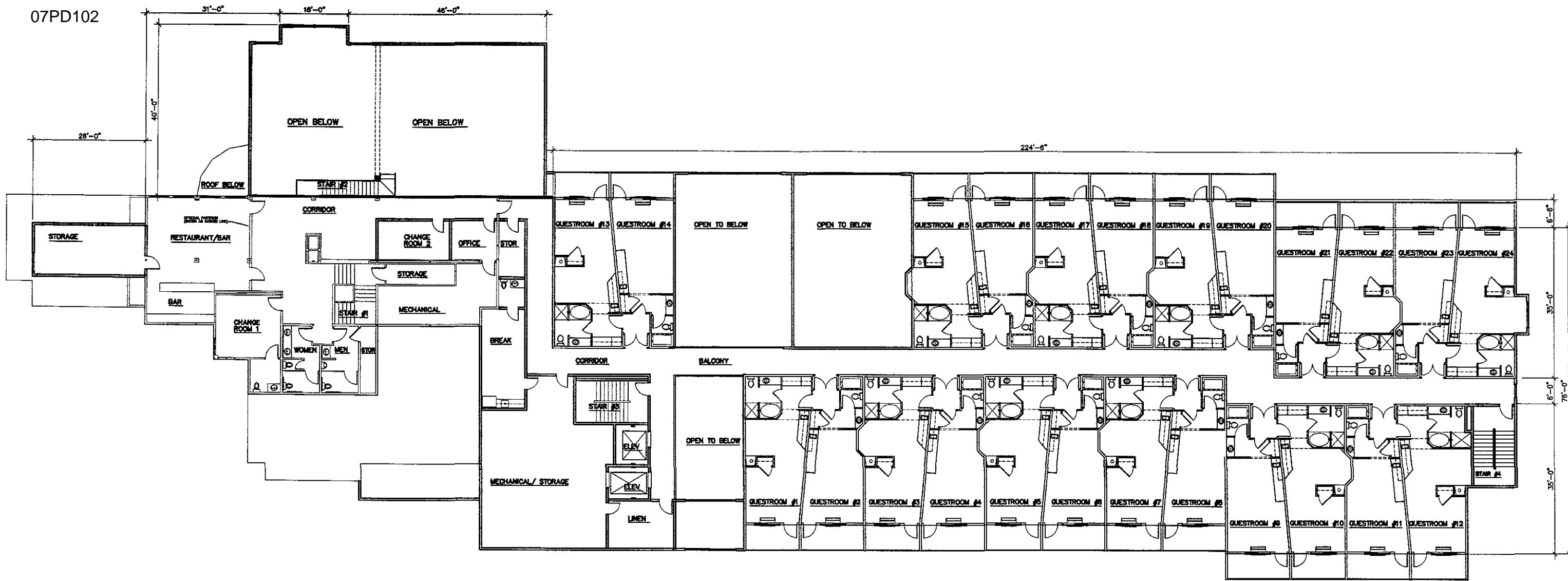


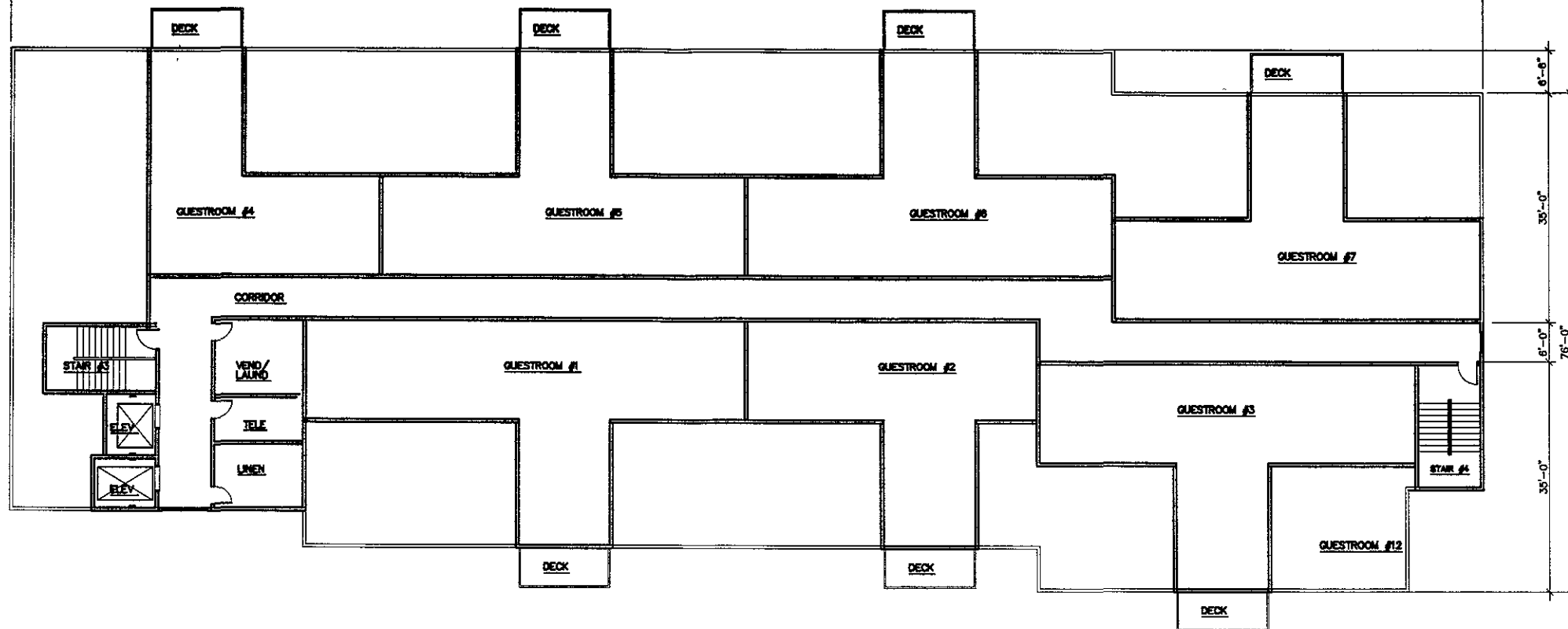
FIRST FLOOR PLAN
 TOTAL AREA: 27,138.0 SQ. FT. 3/32" = 1'-0"

PRELIMINARY NOT FOR CONSTRUCTION



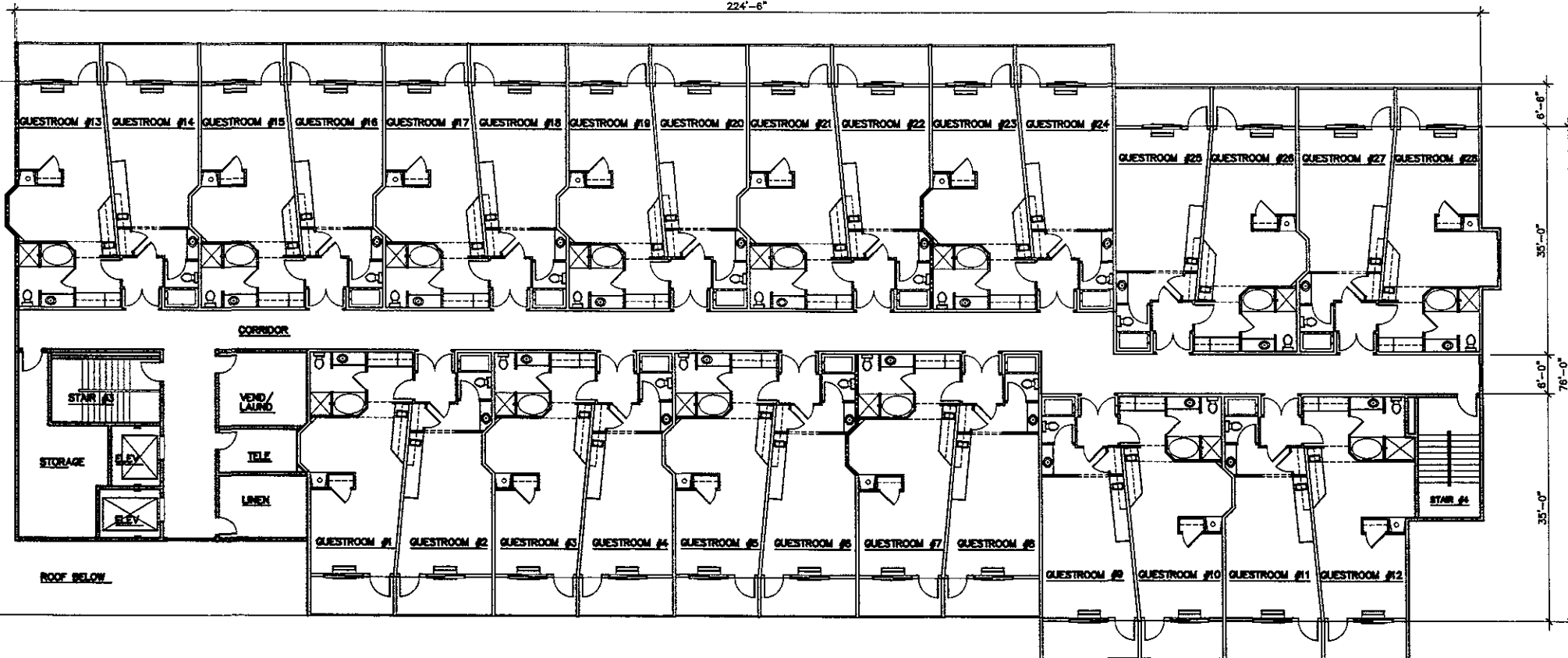
SECOND FLOOR PLAN
 TOTAL AREA: 19,380.0 SQ. FT. 3/32" = 1'-0"

PRELIMINARY NOT FOR CONSTRUCTION



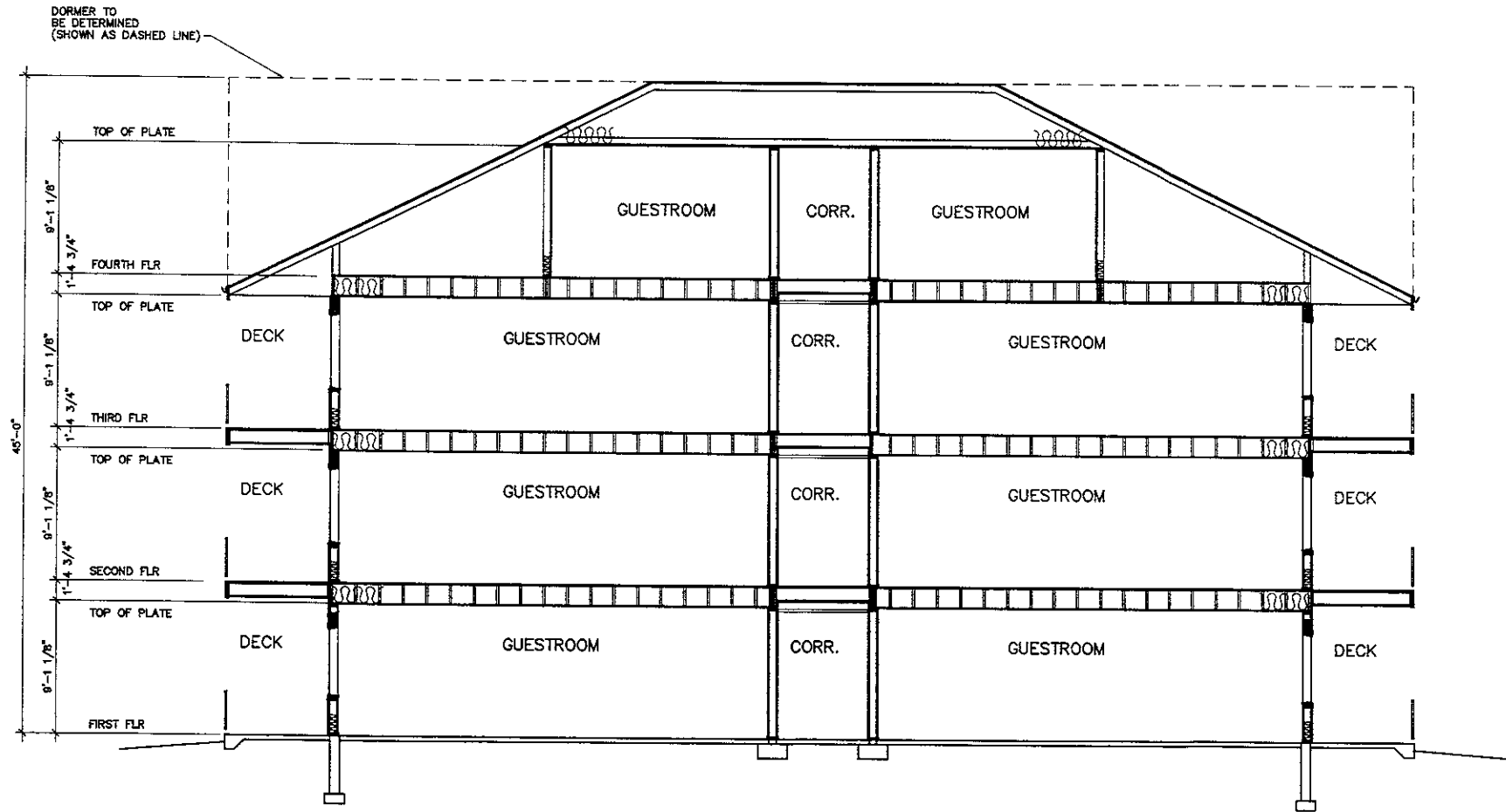
FOURTH FLOOR PLAN

TOTAL AREA: 10,445.0 SQ. FT. 3/32" = 1'-0"

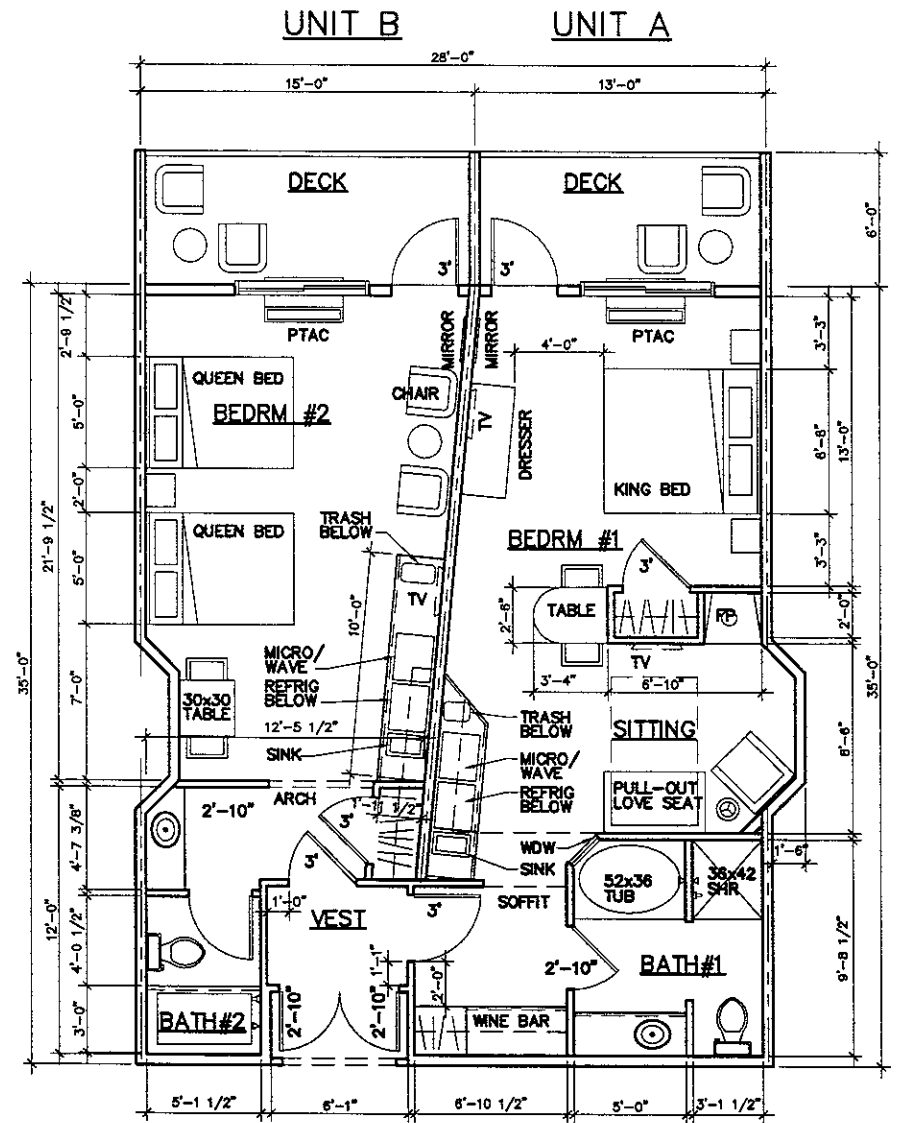


THIRD FLOOR PLAN

TOTAL AREA: 16,750.0 SQ. FT. 3/32" = 1'-0"



① TYPICAL BUILDING SECTION
 3/16" = 1'-0"



② GUESTROOM SUITE
 1/4" = 1'-0"

UNIT A	521 sf
UNIT B	404 sf
UNIT ENTRY	29 sf
TOTAL	954 sf

PRELIMINARY NOT FOR CONSTRUCTION