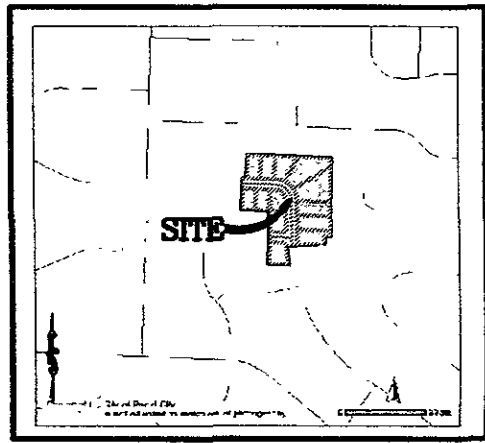
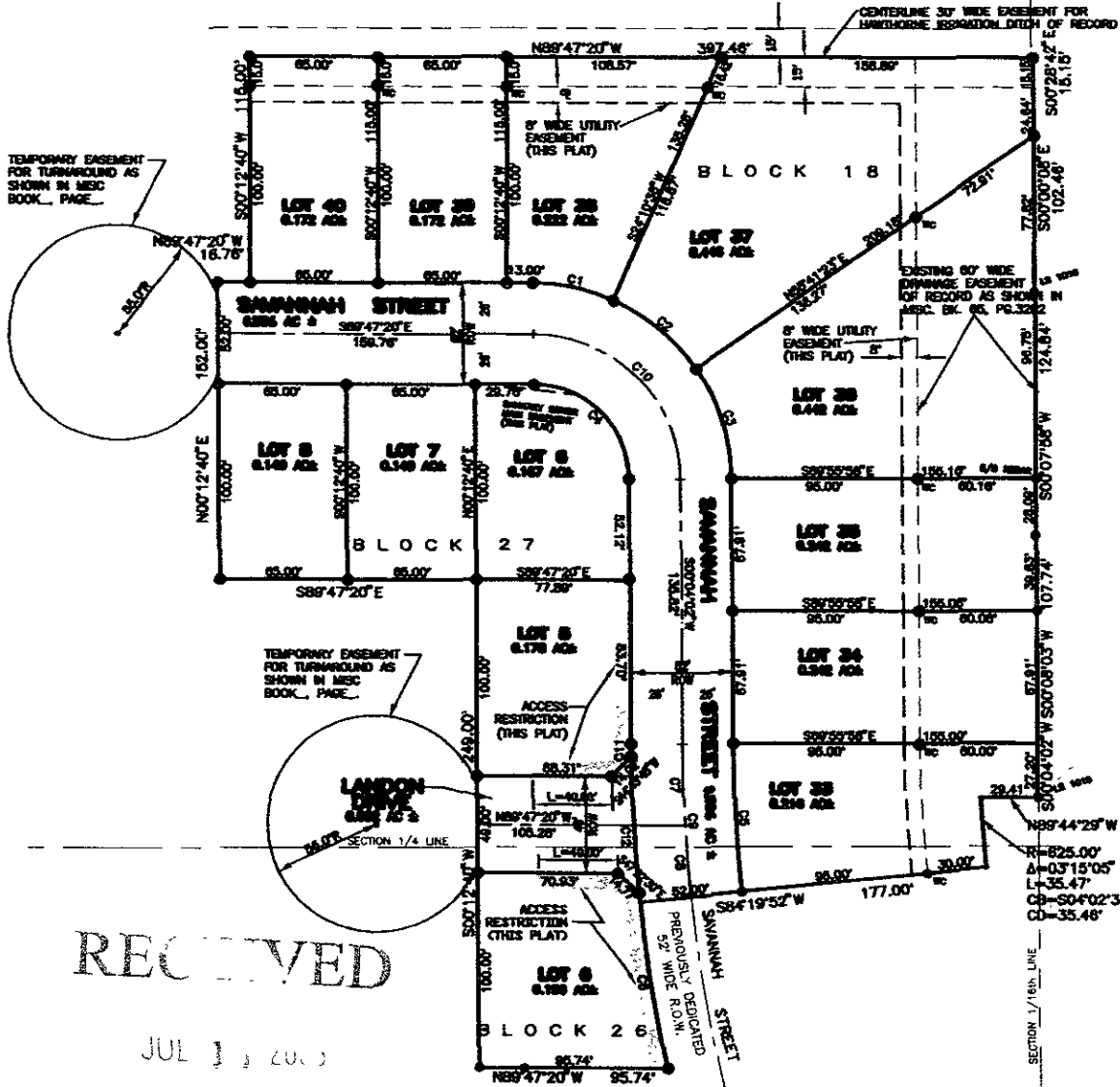




CURVE TABLE	NUMBER	RADIUS	DEFLECTION ANGLE	ARC LENGTH	CHORD BEARING	CHORD LENGTH
	C1	100.00	23°57'36"	41.53	N77°49'21"W	41.52
	C2	100.00	31°30'46"	55.00	S80°03'56"E	54.31
	C3	100.00	34°22'36"	60.00	S17°07'17"E	60.10
	C4	48.00	86°31'23"	75.28	S44°51'39"E	67.80
	C5	750.00	08°44'18"	75.00	S02°48'03"E	75.05
	C6	802.00	08°30'45"	91.18	S08°34'28"E	91.11
	C7	775.00	03°01'07"	40.88	S07°26'31"E	40.88
	C8	775.00	02°43'03"	38.80	N04°18'36"W	38.80
	C9	775.00	08°44'18"	77.68	S02°48'03"E	77.68
	C10	74.00	88°31'23"	116.05	S44°51'39"E	104.52
	C11	802.00	08°27'00"	6.30	S00°10'16"E	6.30
	C12	775.00	03°05'08"	43.08	S02°38'04"E	43.08



**PLAT DATA:**  
 TOTAL AREA PLATTED: 3.672 ACRES  
 TOTAL LOTS: 13 LOTS  
 RIGHT-OF-WAY TO BE DEDICATED TO THE PUBLIC THIS PLAT: 0.676 ACRES

**INDEX OF SHEETS**

SHEET NO.	TITLE
1	PRELIMINARY PLAT
2	GRAZING PLAN
3	UTILITY COMPANY LAYOUT
4-6	STREET & UTILITY PLAN/PROFILES
7-8	DETAILS
9	RVSD DESIGN AND CONSTRUCTION STANDARDS

**CITY OF RAPID CITY GROWTH MANAGEMENT DEPT. DEVELOPMENT SERVICES**

Plans are reviewed for general conformance with applicable governmental regulations, design criteria and engineering standards. The City of Rapid City does not certify the suitability, adequacy or completeness of the plans or design, which are the responsibility of the engineer of record. All necessary permits shall be obtained prior to construction of the proposed public improvements.

Engineering Review: \_\_\_\_\_ Date: \_\_\_\_\_  
 COMMENTS: \_\_\_\_\_

SPERLICH

7199 1/2 MILE E. RAVENHOLE

LEGAL DESCRIPTION

PRELIMINARY PLAT

TRAILWOOD VILLAGE

SHEET 1/8

RECEIVED

JUL 13 2008

Rapid City Growth Management Department