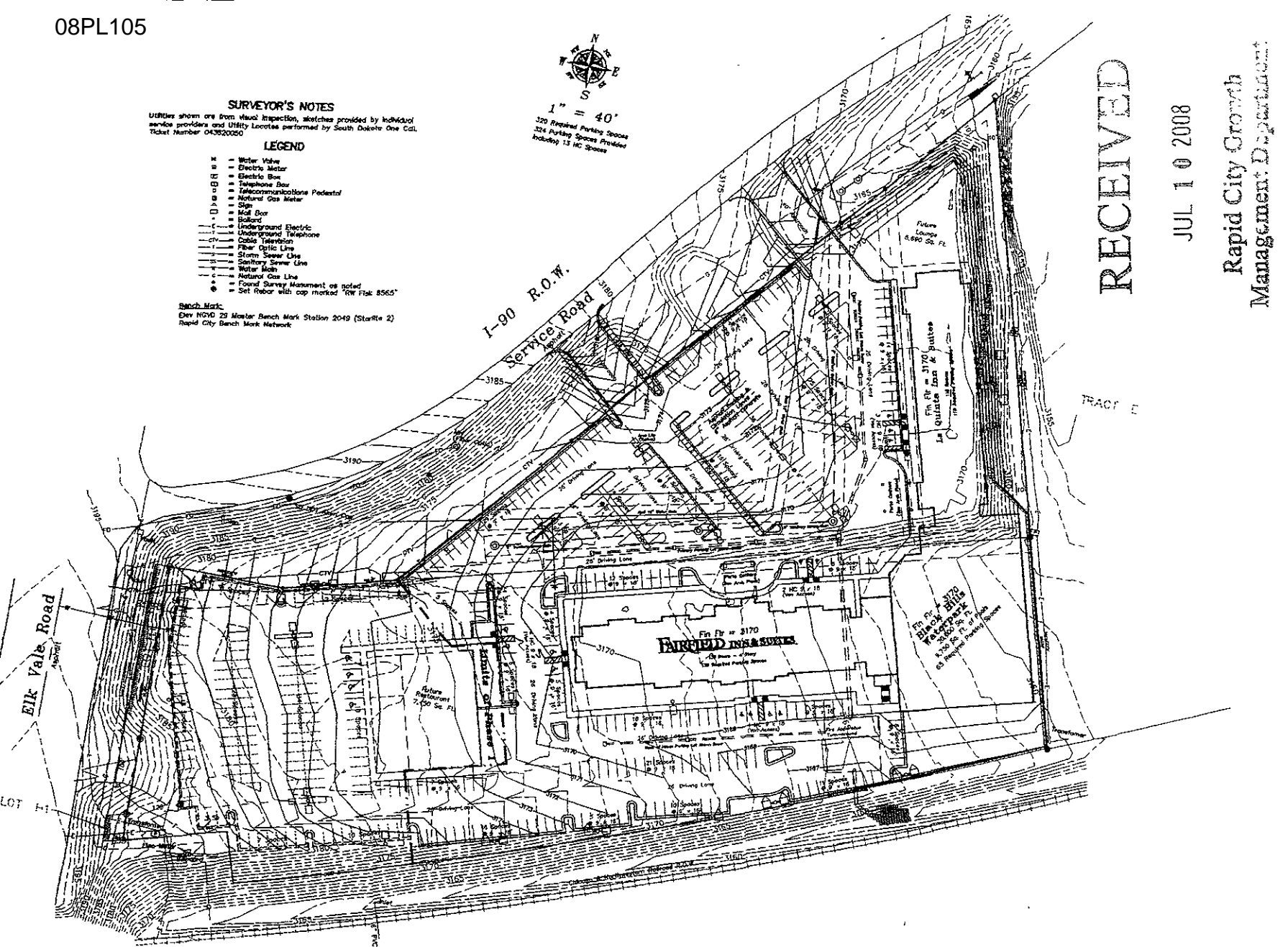

 1" = 40'
 320 Proposed Parking Spaces
 324 Existing Spaces Provided
 Including 13 HC Spaces

SURVEYOR'S NOTES
 Utilities shown are from Visual Inspection, sketches provided by individual service providers and Utility Locates performed by South Dakota One Call. Ticket Number 043820250

- LEGEND**
- W - Water Valve
 - E - Electric Meter
 - EB - Electric Box
 - TB - Telephone Box
 - TC - Telecommunications Pedestal
 - GM - Natural Gas Meter
 - S - Sign
 - MD - Mail Box
 - B - Ballast
 - UE - Underground Electric
 - UT - Underground Telephone
 - CV - Cable Television
 - FL - Fiber Optic Line
 - SL - Storm Sewer Line
 - SS - Sanitary Sewer Line
 - WM - Water Main
 - NG - Natural Gas Line
 - FM - Found Survey Monument as noted
 - SR - Set Rebar with cap marked "RW Flat 8565"

Bench Mark
 Dev NGVD 29 Master Bench Mark Station 2049 (Star/ite 2)
 Rapid City Bench Mark Network



RECEIVED

JUL 10 2008

Rapid City Growth
 Management Department

Master Site Plan - Atlantis, LLC
 Lot 1 and Lot 2 of Davis Subdivision in
 Box Elder, Pennington County, South Dakota
 and
 Lot 1 of Atlantis Subdivision in
 Rapid City, Pennington County, South Dakota

2/2/05
3/2/05
4/2/05
5/2/05
6/2/05
7/2/05

Fisk Land Surveying
 & Consulting
 Engineers, Inc.

TPO

Date:	3/2/05
Surveyed by:	ML/RE
Drawn by:	CAR/RE
Checked by:	WF
Revisions:	8/14/05
	3/25/06
	4/12/06
	11/9/06
	7/22/08
Project No.:	04-12-05