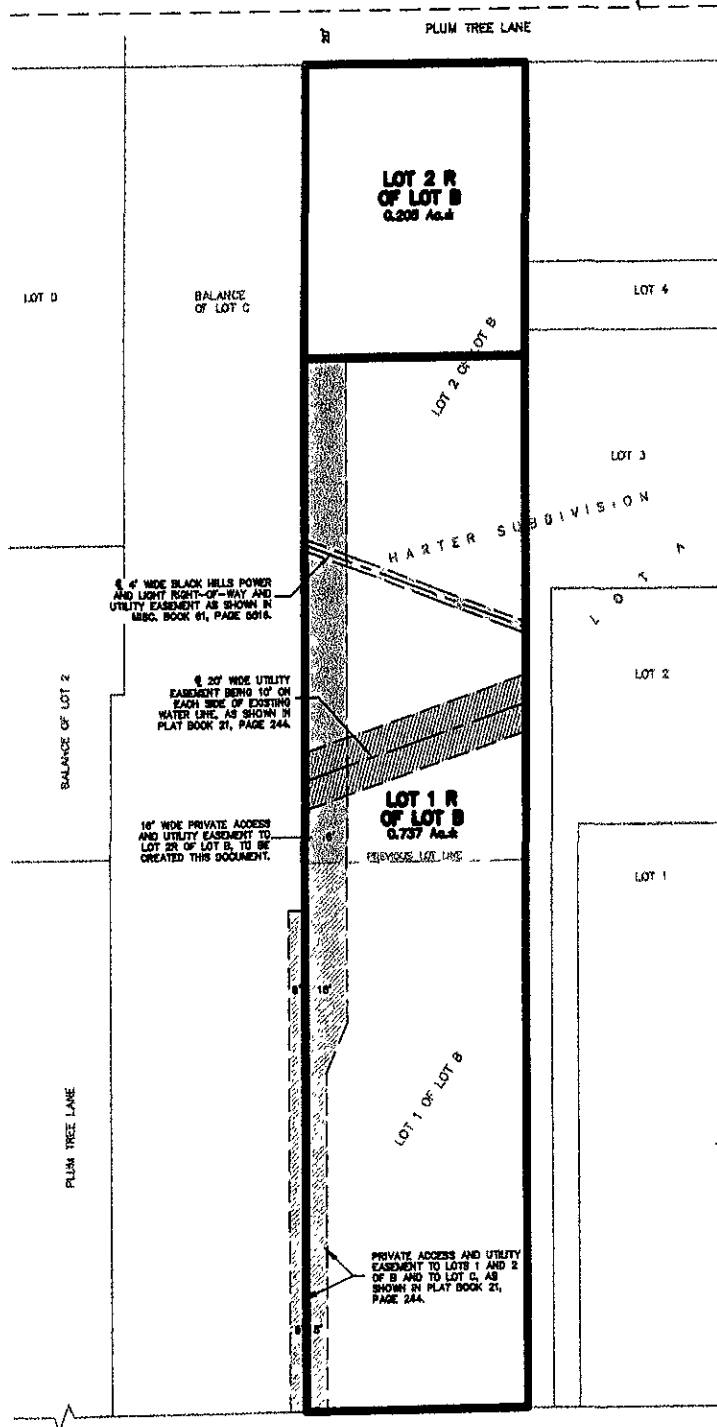


PLAT OF LOTS 1R AND 2R OF LOT B IN HARTER ADDITION

(formerly Lots 1 and 2 of Lot B in Harter Addition)
LOCATED IN THE NW1/4 OF THE NE1/4,
SECTION 3, T1N, R7E, BHM
RAPID CITY, PENNINGTON COUNTY, SOUTH DAKOTA

20' WIDE ACCESS RIGHT-OF-WAY
EASEMENT FOR SANITARY SEWER AS
SHOWN IN PLAT BOOK 6, PAGE 33



RECEIVED

JUN 9 7 2008

Rapid City Growth
Commission Department



N.T.S.

CANYON LAKE DRIVE
Renner & Associates, LLC.

616 Sixth St. * Rapid City, SD 57701 * 605/721-7310
FAX: 605/721-7313 * E-MAIL: Gary@RennerAssoc.com
* Spearfish 605/717-0016 *



CITY HALL 1903