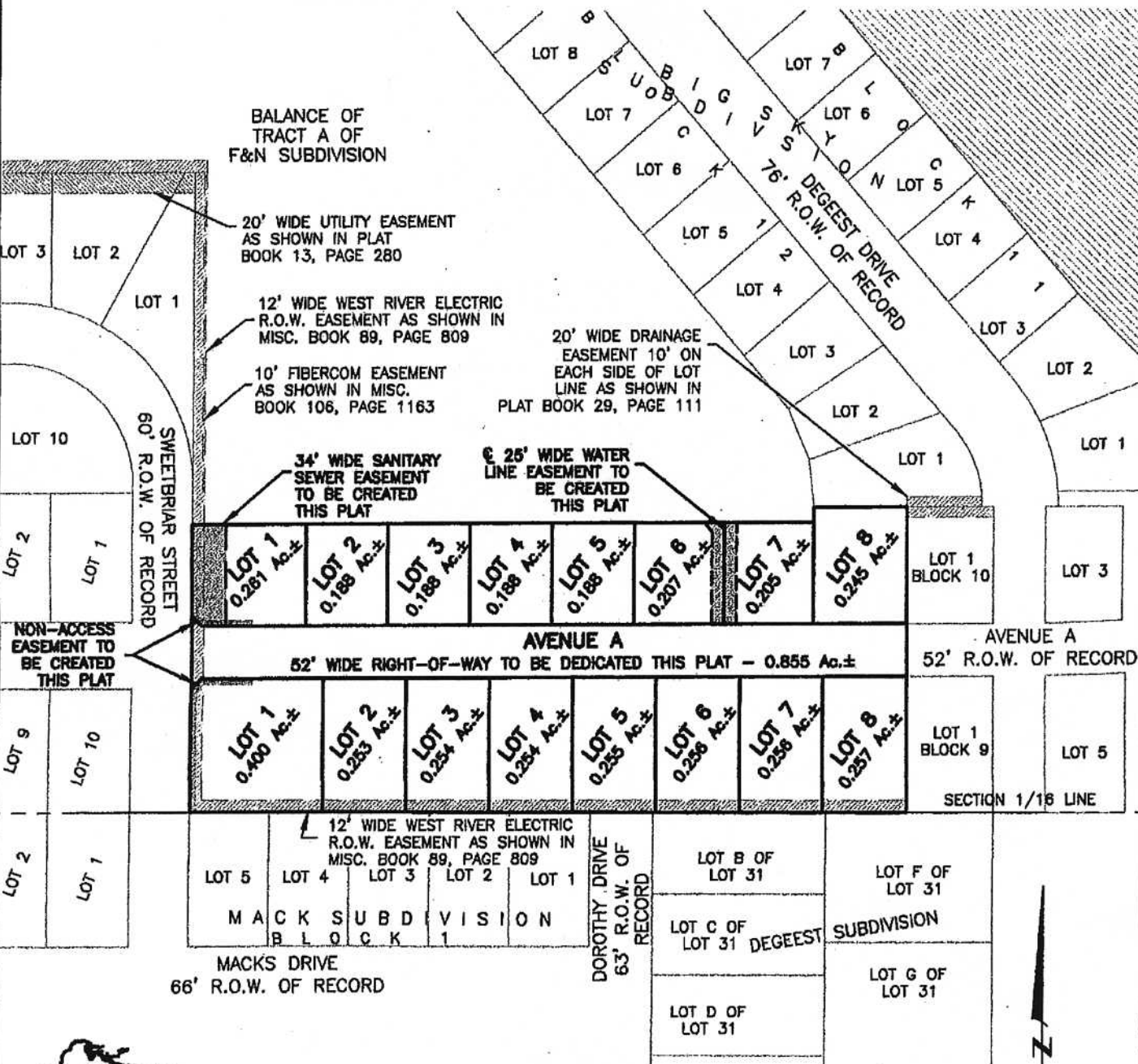


LOTS 1-8 OF BLOCK 1 & LOTS 1-8 OF BLOCK 2, HOMESTEAD PLAZA SUBDIVISION AND DEDICATED RIGHT-OF-WAY OF AVENUE A

(formerly A Portion of Tract A of F&N Subdivision,
LOCATED IN THE NE1/4 OF THE SW1/4
SECTION 3, T1N, R8E, BHM
RAPID CITY, PENNINGTON COUNTY, SOUTH DAKOTA



CITY HALL 1903

Renner & Associates, LLC.

616 Sixth St. * Rapid City, SD 57701 * 605/721-7310
FAX: 605/721-7313 * E-MAIL: Gory@RennerAssoc.com
* Spearfish 605/717-0016 *

APRIL 4, 2008
SCALE: NTS

