

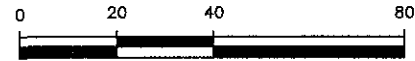
VACATION OF MINOR DRAINAGE AND UTILITY EASEMENT LOT 8 OF BLOCK 3, RAINBOW RIDGE SUBDIVISION

LOCATED IN THE SE1/4 OF THE NE1/4,
SECTION 23, T2N, R7E, BHM
RAPID CITY, PENNINGTON COUNTY, SOUTH DAKOTA



JUNE 13, 2008

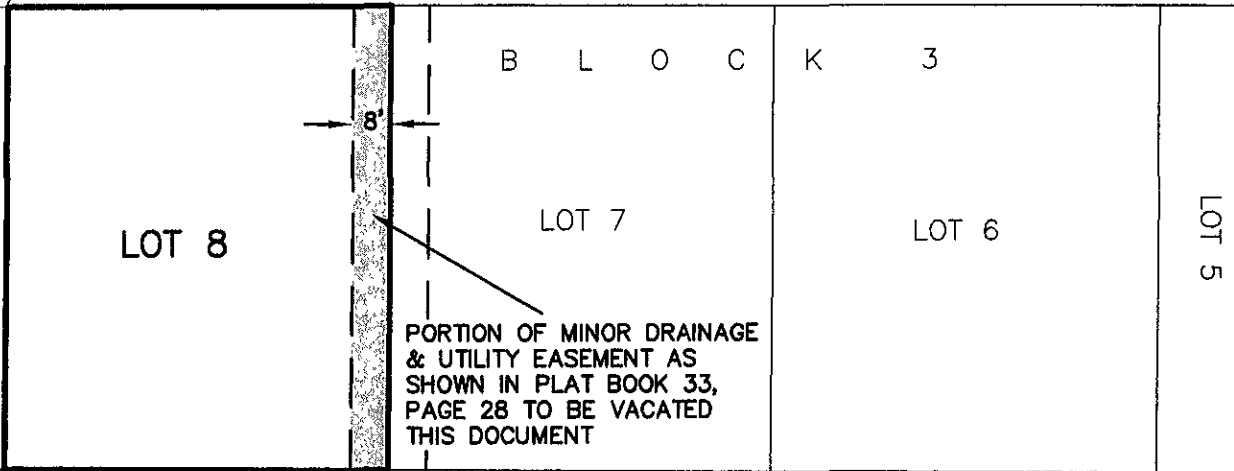
UNPLATTED PORTION OF THE
NE1/4 OF THE NE1/4



SCALE 1" = 40'

SECTION 1/16 LINE

UNPLATTED PORTION OF THE
SE1/4 OF THE NE1/4



ALMA STREET

52' WIDE R.O.W. OF RECORD

B L O C K 1

LOT 11

LOT 10

LOT 9

RECEIVED

JUN 13 2008

Rapid City Growth
Management Department

Renner & Associates, LLC.

616 Sixth St. * Rapid City, SD 57701 * 605/721-7310
FAX: 605/721-7313 * E-MAIL: Gary@RennerAssoc.com
* Spearfish 605/717-0016 *

