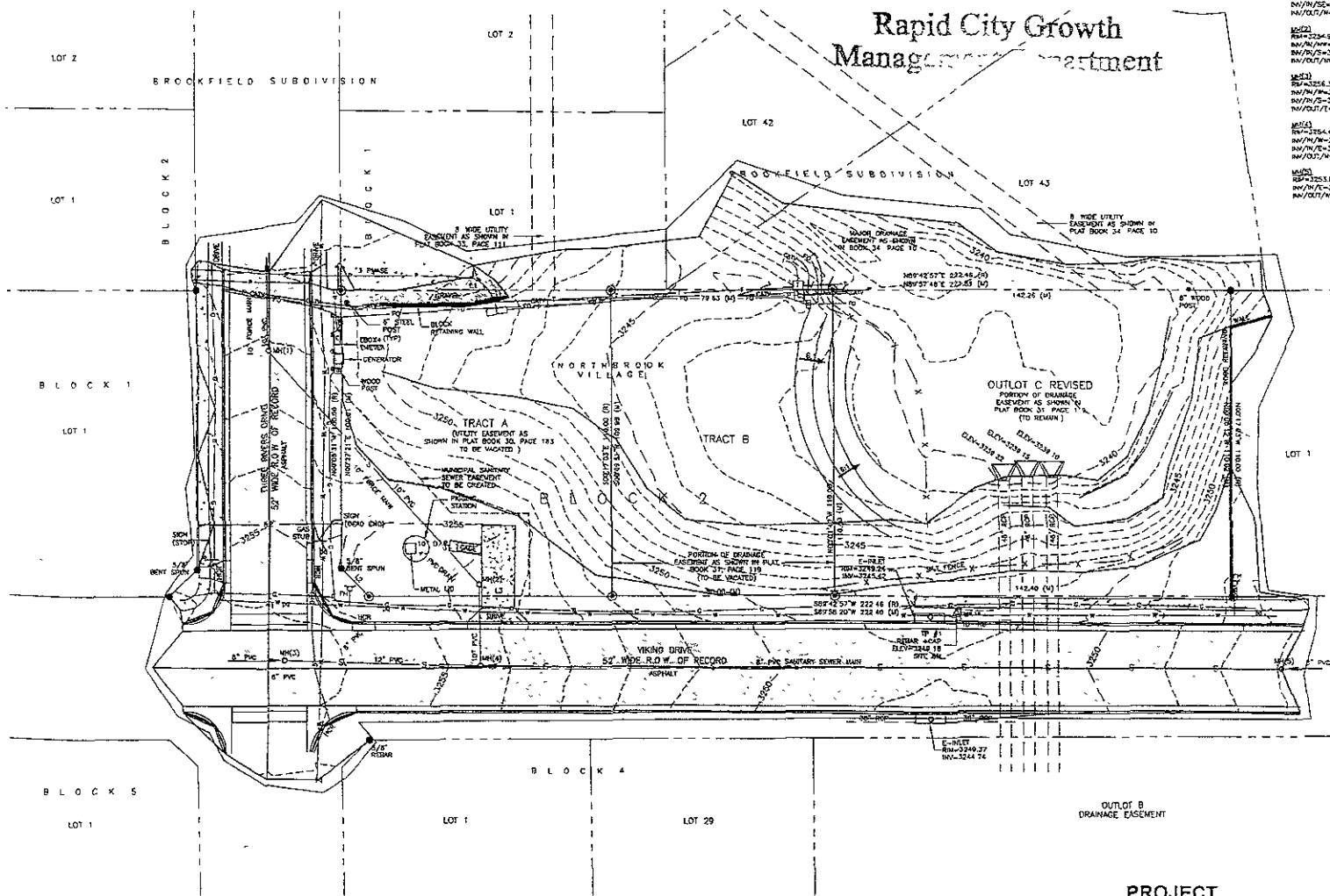


MAY 30 2008

Rapid City Growth Management Department



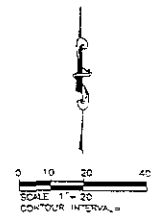
10211
 RP# 3282.24
 DN/IN/FE# 3241.48
 NW/OUT/FE# 3241.48

 10222
 RP# 3234.84
 NW/IN/FE# 3233.51
 NW/OUT/FE# 3242.87
 NW/OUT/FE# 3242.80

 10211
 RP# 3236.30
 NW/IN/FE# 3243.70
 NW/IN/FE# 3243.23
 NW/OUT/FE# 3243.67

 10213
 RP# 3254.48
 NW/IN/FE# 3243.09
 NW/IN/FE# 3243.46
 NW/OUT/FE# 3243.02

 10213
 RP# 3253.08
 NW/IN/FE# 3243.88
 NW/OUT/FE# 3243.83



- LEGEND**
- △ CONTROL POINT
 - WAINWALE
 - ▭ FIRE HYDRANT
 - ▭ WATER VALVE
 - ▭ 30" GATE BOX
 - ▭ ELECTRIC BOX
 - ▭ GAS METER
 - ▭ METER BOX
 - ▭ SPLIT POINT
 - ▭ CURB & GUTTER
 - ▭ WATER LINE
 - ▭ FIBER OPTIC LINE
 - ▭ CABLE LINE
 - ▭ TELEPHONE LINE
 - ▭ SANITARY SEWER LINE
 - ▭ GAS LINE
 - ▭ FENCE MARK
 - ▭ WORK CENTER (1")
 - ▭ MAJOR CONTROL POINT
 - ▭ ADJUSTED SURFACE
 - ▭ CONCRETE SURFACE
- REPORTED FOUND SURVEY MONUMENT MARKED AS 30" UNLESS OTHERWISE NOTED
 ○ REPORTS SET 5/8" REBAR MARKED PERMANENT ASSOC. SET
 (A) RELAYED THIS SURVEY
 (P) RECORDED IN A PREVIOUS PLAT OR DESCRIPTION

DRUAM DESIGN INTERNATIONAL, INC.
 CIVIL ENGINEERING LANDSCAPE ARCHITECTURE
 LAND MANAGEMENT CONSULTANTS
 1100 WEST 10TH AVENUE, SUITE 100
 RAPID CITY, SD 57102
 PH: 605.343.1111
 FAX: 605.343.1112
 WWW.DRUAMDESIGN.COM

Scale: AS SHOWN

Checked By: JS
 Drawn By: JS
 Design: JS
 Title: 08-0522
 Date: 05/29/08
 Designer: J. Penner
 Checker: J. Penner

NORTHBROOK VILLAGE
 TRACT A AND OUTLOT C, BLOCK 2

BASIS OF BEARING: BEARING NORTH AS DETERMINED BY
 GLOBAL POSITIONING SYSTEM (GPS)

UTILITIES
 SOUTH DAKOTA ONE CALL NOTIFICATION CENTER
 115 EMBURY HEIGHTS DRIVE
 PITTSBURGH, PA 15229
 1-800-485-7474

The locations of existing underground utilities are shown on an approximate map only and have not been independently verified by the engineer or his representatives. The contractor shall determine the exact location of all existing utilities before commencing work, and approve to be fully responsible for any and all damages which might be occasioned by the contractor's failure to locate, locate and preserve any and all underground utilities.

CERTIFICATE OF SURVEYOR
 I, Eric D. Howard, Registered Land Surveyor No. 0213 of the State of South Dakota do hereby certify that being so authorized I did cause the within shown survey and map to be made under my direction and that the said map correctly shows the existing conditions and permanent markers and their location.

DATE: Eric D. Howard Registered Land Surveyor

LINE	LENGTH	BEARING
11. (B)	97.36	N85°42'27"E
11. (C)	37.11	S82°37'45"W
12. (B)	14.32	N49°11'47"W
12. (A)	16.08	N44°52'42"W
13. (B)	81.82	S82°52'57"W
13. (A)	81.82	S82°58'20"W

