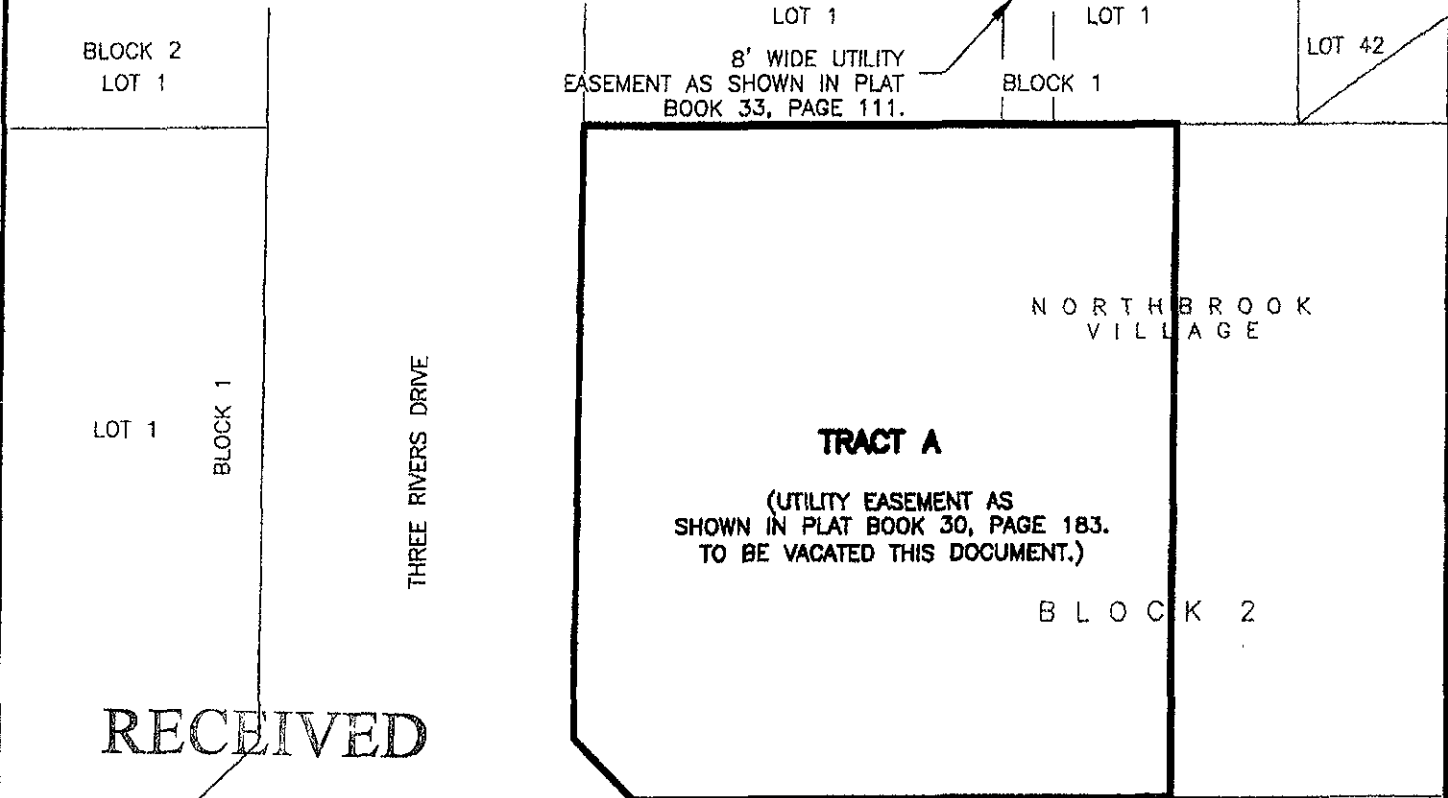


08VE013

EXHIBIT 'A'

VACATION OF UTILITY EASEMENT TRACT A, BLOCK 2 NORTHBROOK VILLAGE

LOCATED IN THE SE1/4 OF THE SE1/4
SECTION 13, T2N, R7E, BHM,
RAPID CITY, PENNINGTON COUNTY, SOUTH DAKOTA

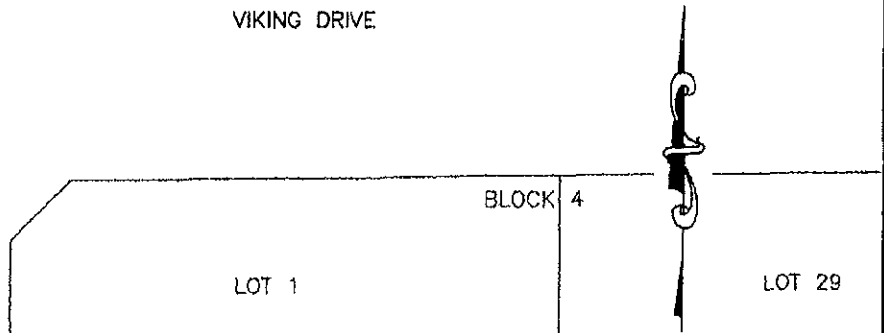
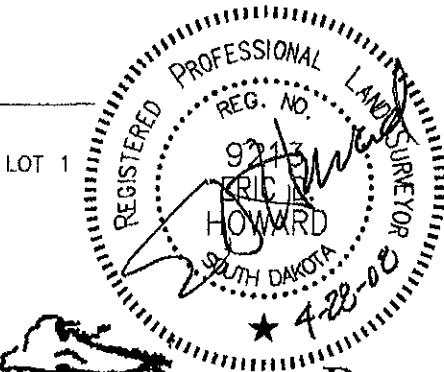


RECEIVED

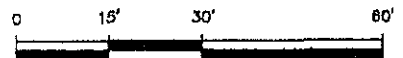
MAY 30 2008

Rapid City Growth
Management Department

VIKING DRIVE



APRIL 25, 2008



SCALE 1" = 30'

Renner & Associates, LLC.

616 Sixth St. * Rapid City, SD 57701 * 605/721-7310

FAX: 605/721-7313 * E-MAIL: Gary@RennerAssoc.com

Spearfish Office: 605/717-0016

PREPARED FOR:

DREAM DESIGN INTERNATIONAL, INC
528 KANSAS CITY STREET, STE. 4
RAPID CITY, SD 57701
(605) 348-0688



CITY HALL 1903