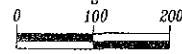


Plat of Lots 2A, 2B and 2C of Lot 2 of Potts Subdivision and Dedicated Right-of-Way 08SV024

(Formerly all of Lot 2 of Potts Subdivision)

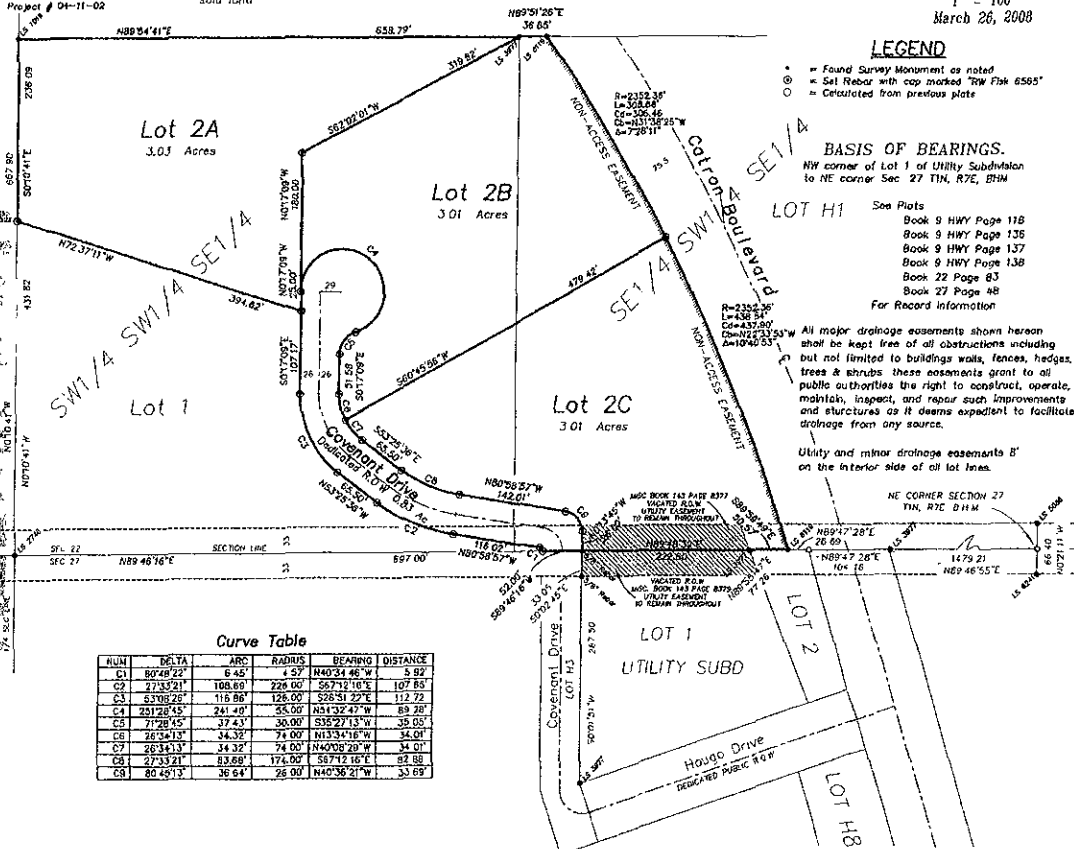
Located in the SW1/4 SW1/4 SE1/4 & SE1/4 SW1/4 SE1/4 of Section 22, T1N, R7E, BHM.,
Rapid City, Pennington County, South Dakota



March 26, 2008

Prepared by:
Fish Land Surveying &
Consulting Engineers, Inc.
P.O. Box 8154
Rapid City, South Dakota 57709
605-376-1338
Project # 04-11-02

Covenant Drive containing 0.83 Acres more or less
as shown hereon is hereby dedicated as public
right-of-way, however, such dedication shall not
be construed to mean a donation of the fee of
said land



LEGEND

- = Found Survey Monument as noted
- ⊙ = Set Rebar with cap marked "RW Flak 6555"
- = Calculated from previous plats

BASIS OF BEARINGS.

NW corner of Lot 1 of UHRH Subdivision
to NE corner Sec 27 T1N, R7E, BHM

See Plats
Book 9 HWY Page 118
Book 9 HWY Page 135
Book 9 HWY Page 137
Book 22 Page 83
Book 27 Page 88
For Record Information

All major drainage easements shown hereon
shall be kept free of all obstructions including
but not limited to buildings walls, fences, hedges,
trees & shrubs these easements grant to all
public authorities the right to construct, operate,
maintain, inspect, and repair such improvements
and structures as it deems expedient to facilitate
drainage from any sources.

Utility and minor drainage easements B'
on the interior side of all lot lines.

Curve Table

NUM	DELTA	ARC	RADIUS	BEARING	DISTANCE
C1	80°49'22"	6.40'	4.57'	N43°34'46"W	5.92'
C2	27°33'01"	108.60'	226.00'	S57°12'15"W	107.85'
C3	S3°08'26"	116.86'	126.00'	S28°51'27"E	112.72'
C4	231°28'45"	241.40'	35.00'	N41°32'47"W	89.28'
C5	71°28'45"	37.43'	30.00'	S35°27'13"W	35.05'
C6	26°44'13"	34.32'	74.00'	N133°14'16"W	34.01'
C7	28°34'13"	34.32'	74.00'	N40°08'29"W	34.01'
C8	27°33'21"	83.68'	174.00'	S87°12'16"E	81.88'
C9	80°49'13"	36.64'	26.00'	N40°36'21"W	33.69'