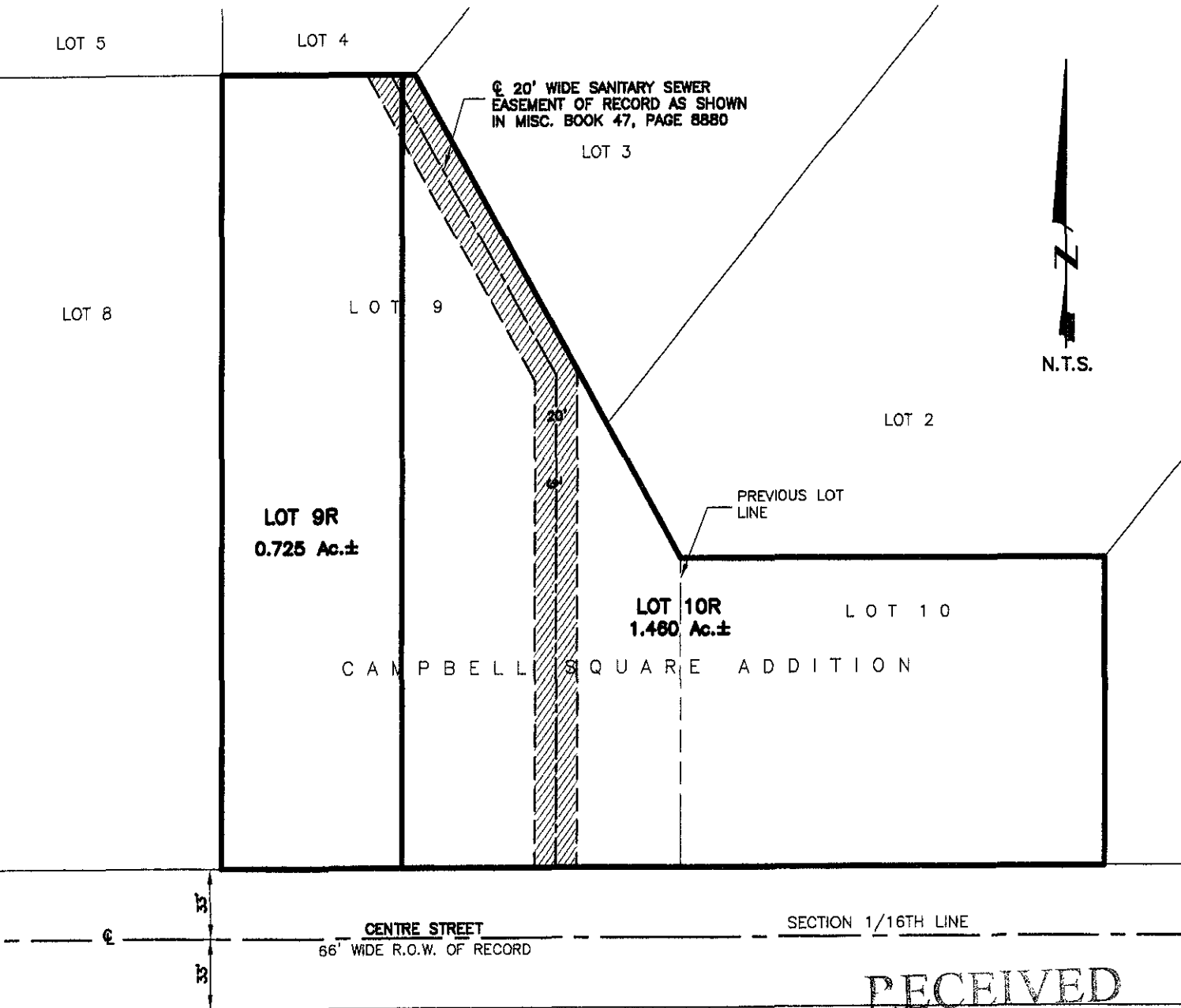


LAYOUT PLAT OF LOTS 9R AND 10R OF CAMPBELL SQUARE ADDITION

(formerly Lot 9 and Lot 10 of Campbell Square Addition)

LOCATED IN GOVERNMENT LOT 4 OF
SECTION 5, T1N, R8E, BHM
RAPID CITY, PENNINGTON COUNTY, SOUTH DAKOTA



RECEIVED

Renner & Associates, LLC.

MAY 23 2008

616 Sixth St. * Rapid City, SD 57701 * 605/721-7310
FAX: 605/721-7313 * E-MAIL: Gary@RennerAssoc.com
* Spearfish 605/717-0016 *

Rapid City Growth
Management Department



CITY HALL 1903