

08CA009

FUTURE LAND USE MAP OF

LOTS 1-8 OF BLOCK 1; LOTS 1-8 OF BLOCK 2; LOTS 1-33 OF BLOCK 3;
TRACTS A, B, C, & D OF BLOCK 4; & DRAINAGE LOT 1,

HOMESTEAD PLAZA SUBDIVISION

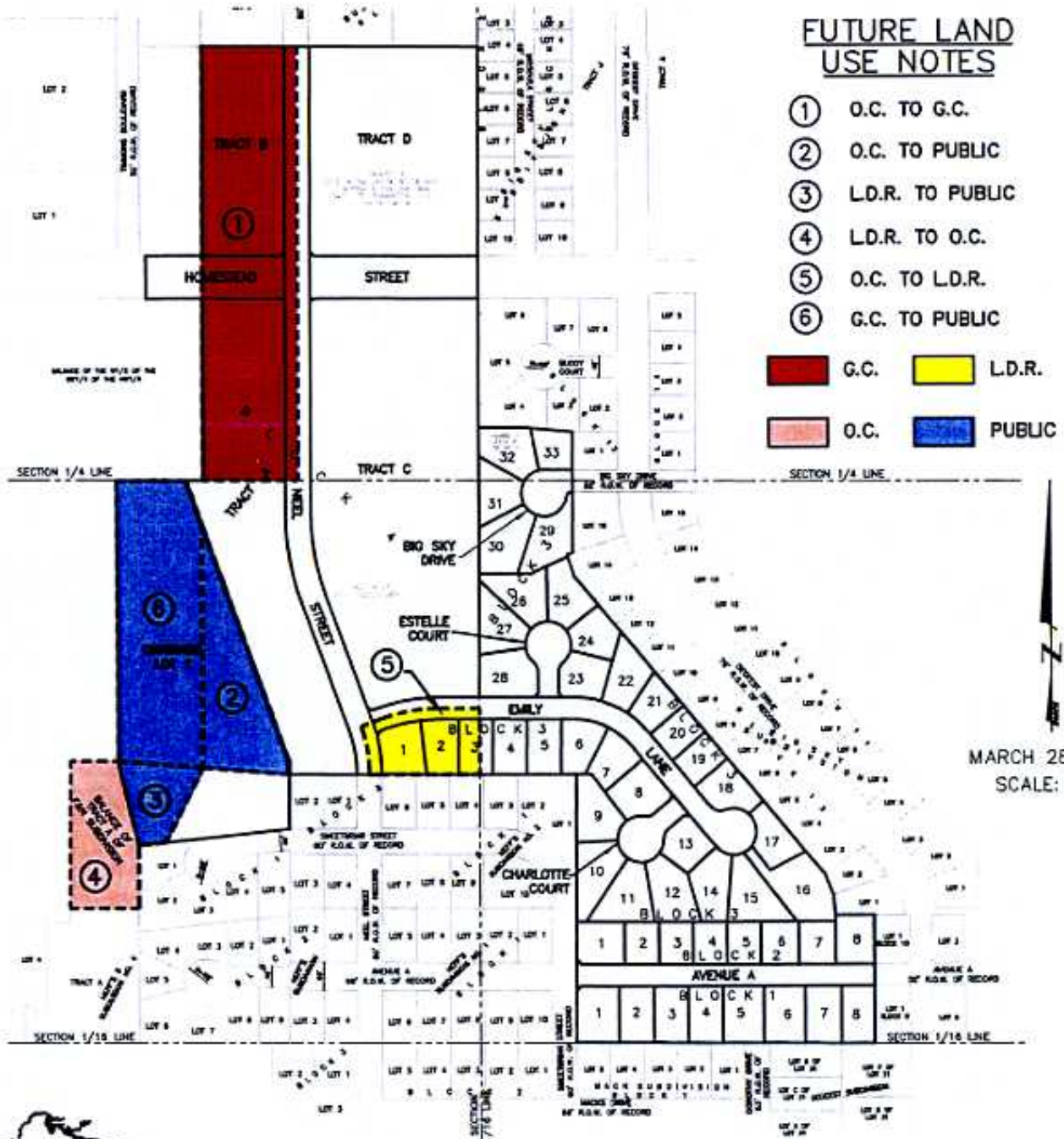
AND DEDICATED RIGHT-OF-WAY OF AVENUE A, BIG SKY DRIVE, CHARLOTTE COURT,
EMILY LANE, ESTELLE COURT, HOMESTEAD STREET, & NEEL STREET

(formerly A Portion of Tract A of F&N Subdivision, Balance of the E1/2 of the SW1/4 of the NW1/4,
& Balance of the SE1/4 of the NW1/4)

LOCATED IN THE S1/2 OF THE NW1/4 &

IN THE N1/2 OF THE SW1/4

SECTION 3, T1N, R8E, BHM
RAPID CITY, PENNINGTON COUNTY, SOUTH DAKOTA



Renner & Associates, LLC.

616 Sixth St. * Rapid City, SD 57701 * 605/721-7310

FAX: 605/721-7313 * E-MAIL: Gary@RennerAssoc.com

* Spearfish 605/717-0016 *



CITY HALL 1903