

A PORTION OF THE SE $\frac{1}{4}$ OF THE NE $\frac{1}{4}$, AND A PORTION OF THE NE $\frac{1}{4}$ OF THE SE $\frac{1}{4}$.

SECTION 14, T2N, R7E, B.H.M.,
RAPID CITY, PENNINGTON COUNTY, SOUTH DAKOTA

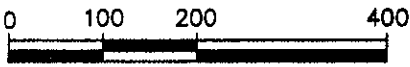
RECEIVED

MAY 0 2008

Rapid City Growth
Management Department

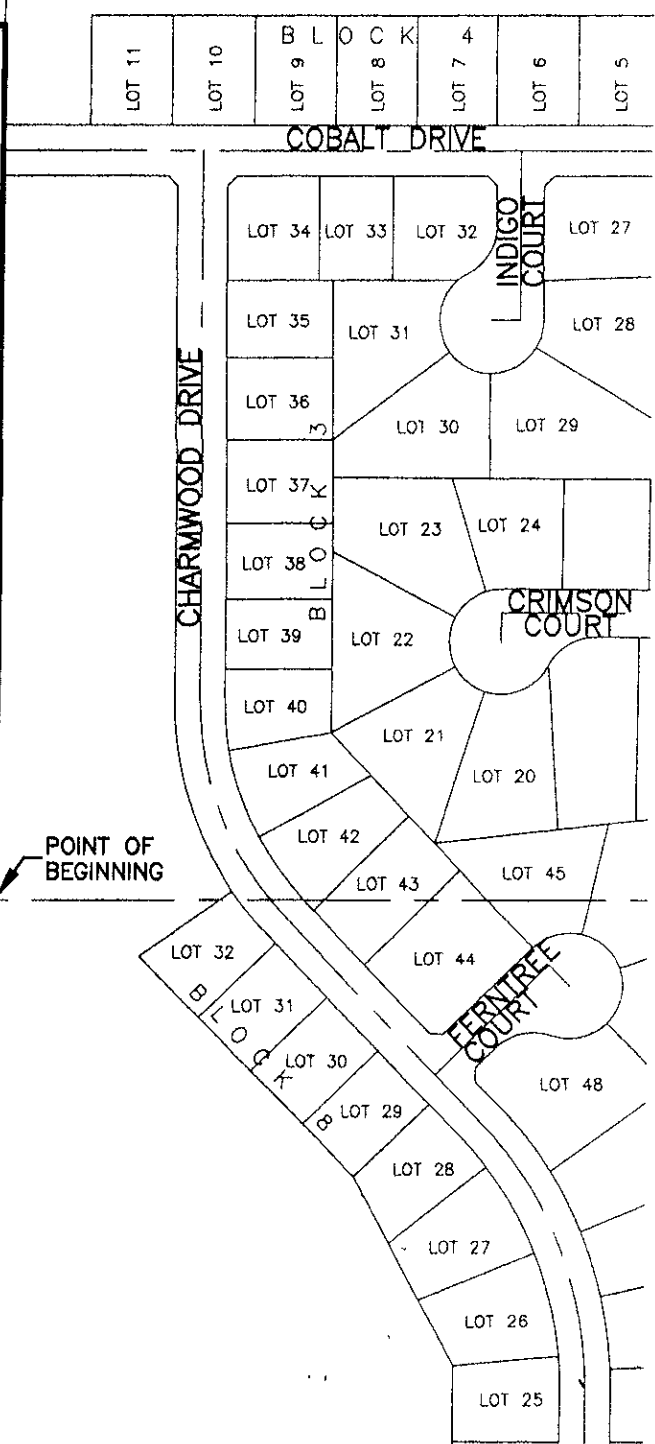
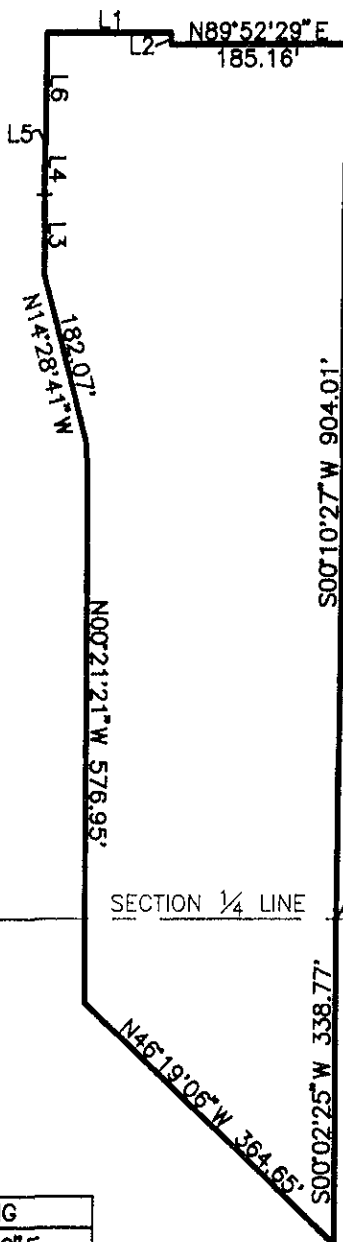


MAY 8, 2008



SCALE: 1" = 200'

SECTION 14
SECTION 13



LINE	LENGTH	BEARING
L1	130.75	N89°52'29"E
L2	11.82	S00°07'31"E
L3	85.00	N00°21'21"W
L4	52.00	N00°07'31"W
L5	0.75	N89°52'29"E
L6	111.82	N00°07'31"W