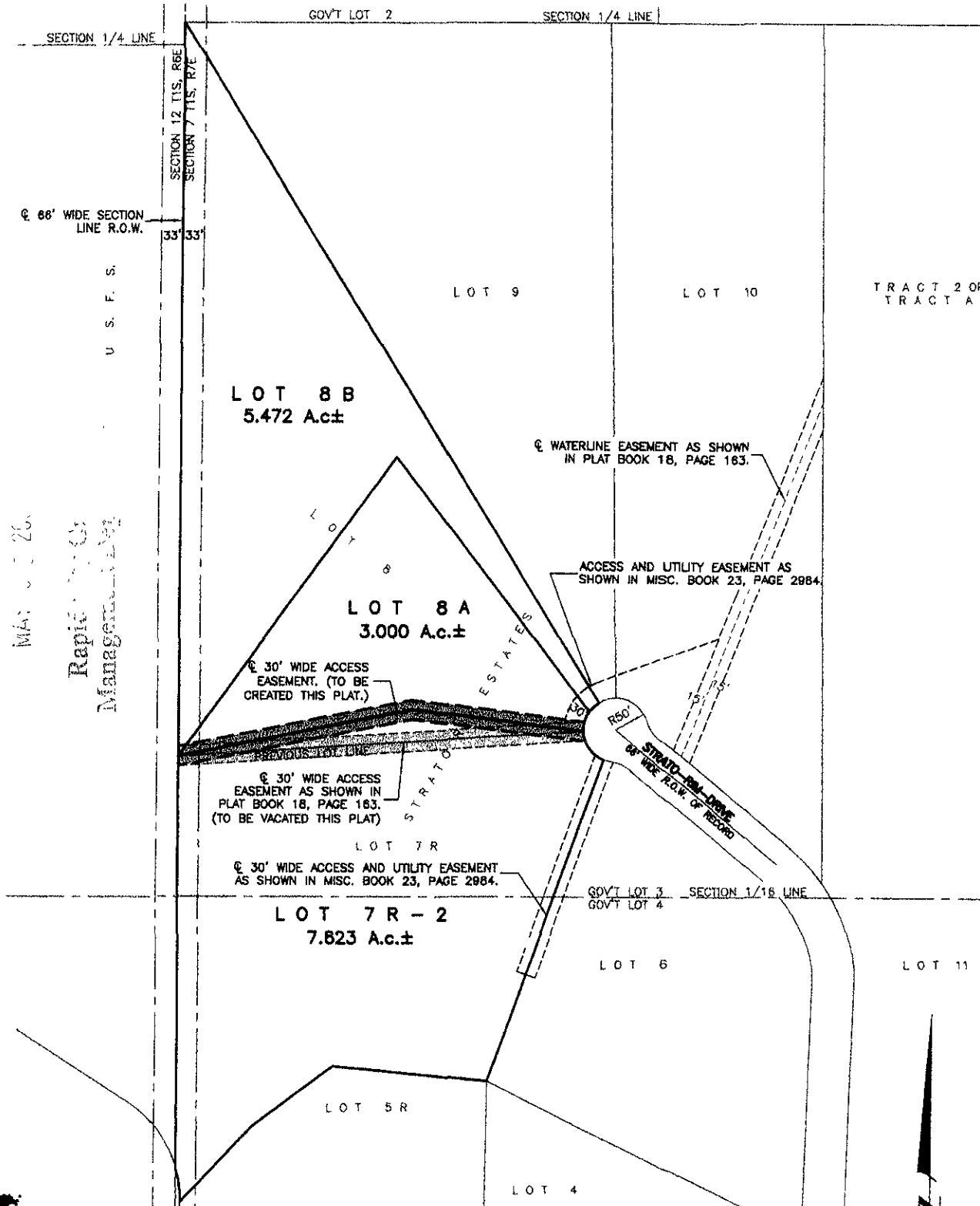


# PLAT OF LOTS 7R-2, 8A AND 8B OF STRATO RIM ESTATES

08PL074

(formerly Lot 7R and Lot 8 of Strato Rim Estates)

LOCATED IN GOVERNMENT LOTS 3 AND 4 OF  
SECTION 7, T1S, R7E, BHM,  
PENNINGTON COUNTY, SOUTH DAKOTA



RECORD

Map 126

Rapid City  
Management

**Renner & Associates, LLC.**

616 Sixth St. \* Rapid City, SD 57701 \* 605/721-7310

FAX: 605/721-7313 \* E-MAIL: Gary@RennerAssoc.com

\* Spearfish 605/717-0016 \*



CITY HALL 1903



N.T.S.