

Plat lay Out

LB 4-14-08

Plat of Lots 4A-1, 4A-2, 4A-3, 4A-4, 4A-5, 4A-6, 4A-7, 4A-8, 4A-9, 4A-12, 4A-13, 4A-15, 4A-16, 4A-17, 4A-18, 4A-19, 4A-20, 4A-21, and 4A-22, Block 4,

H & H Estates Subdivision

Formerly Lot 4A, Block 4, H & H Estates Subdivision Located in the SE 1/4 NW 1/4, SW 1/4 NE 1/4, NW 1/4 SE 1/4 and NE 1/4 SW 1/4 of Section 10, T1N, R8E, BHM, Pennington County, South Dakota

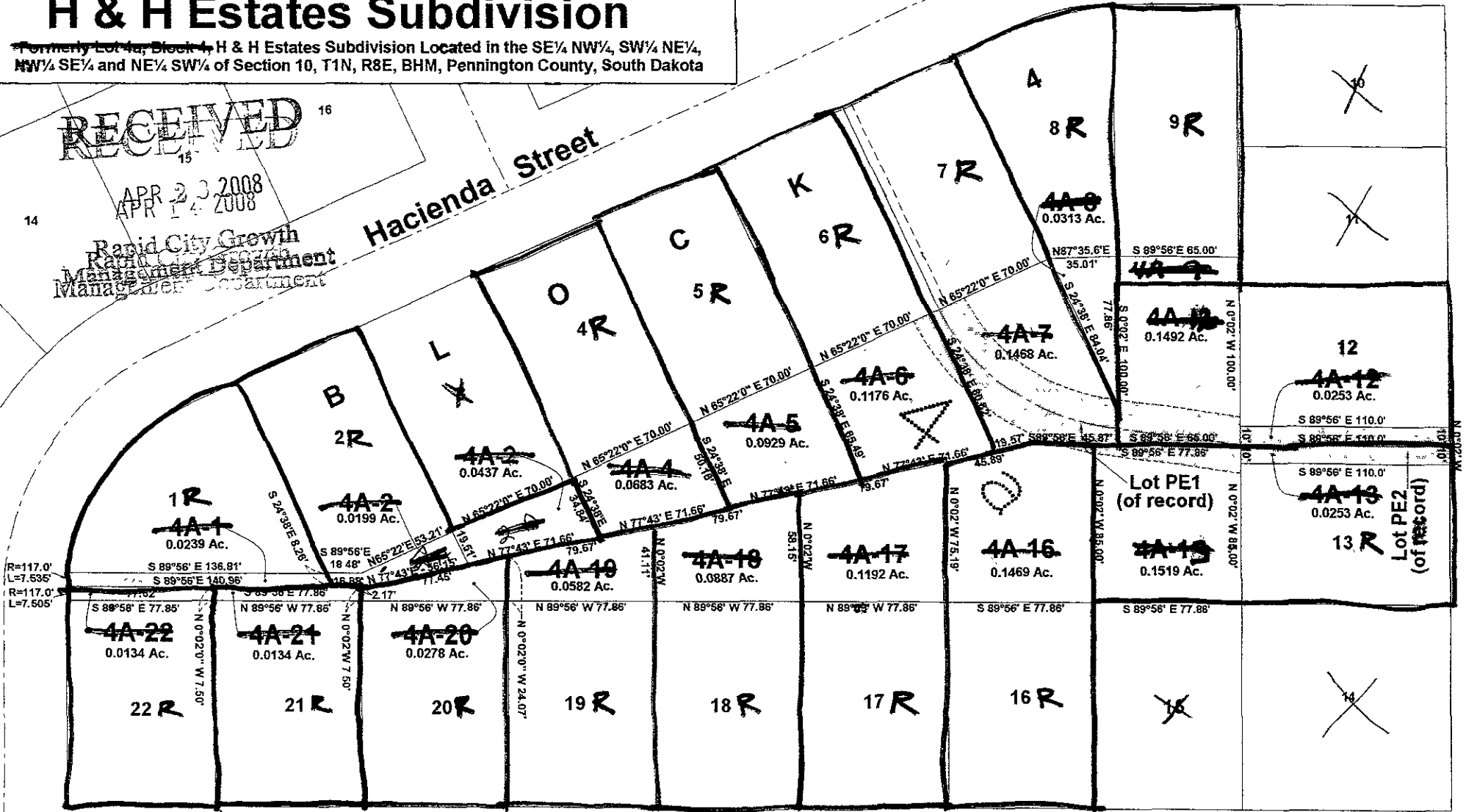
RECEIVED
15

APR 23 2008
APR 14 2008

Rapid City Growth
Management Department

Hacienda Street

Williams Street



Existing 10' Utility Easements side & rear Lot Lines

MANAGEMENT DEPARTMENT
CITY OF CROWTHER
APR 14 2008

604.85 S 0°02' E

COVINGTON STREET

