

# A PORTION OF THE SE<sup>1</sup>/<sub>4</sub> OF THE NE<sup>1</sup>/<sub>4</sub>, AND A PORTION OF THE NE<sup>1</sup>/<sub>4</sub> OF THE SE<sup>1</sup>/<sub>4</sub>,

SECTION 14, T2N, R7E, B.H.M.,  
RAPID CITY, PENNINGTON COUNTY, SOUTH DAKOTA

RECEIVED

MAY 09 2008

Rapid City Growth  
Management Department

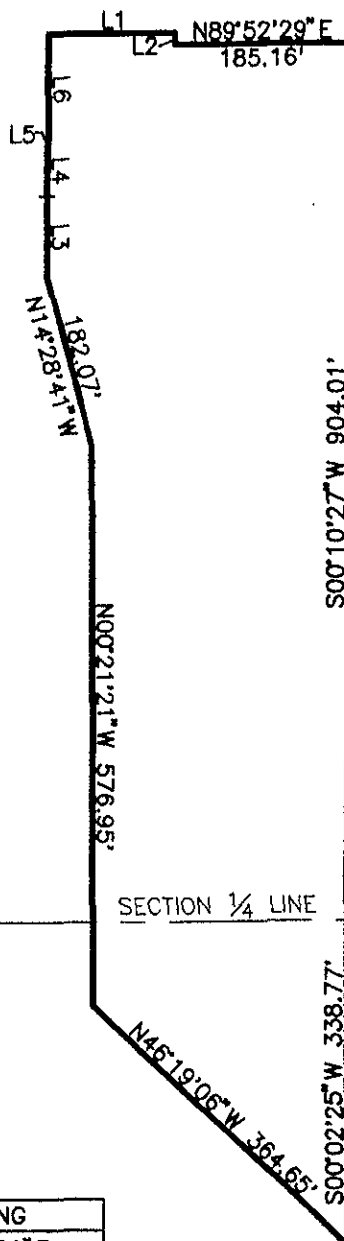


MAY 8, 2008



SCALE: 1" = 200'

LINE	LENGTH	BEARING
L1	130.75	N89°52'29" E
L2	11.82	S00°07'31" E
L3	85.00	N00°21'21" W
L4	52.00	N00°07'31" W
L5	0.75	N89°52'29" E
L6	111.82	N00°07'31" W



SECTION 14  
SECTION 13

