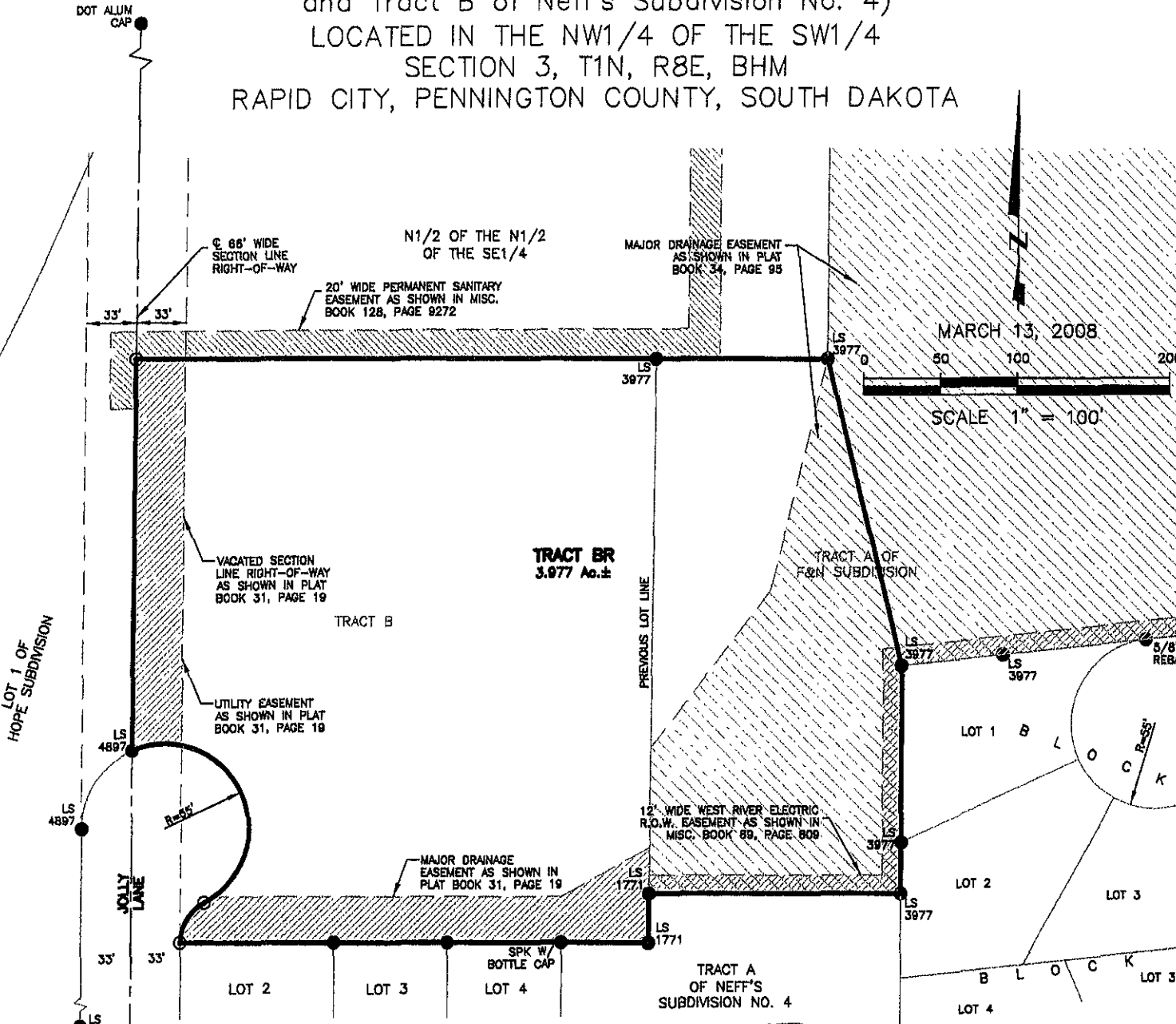


TRACT BR OF NEFF'S SUBDIVISION NO. 4

(formerly A Portion of Tract A of F&N Subdivision and Tract B of Neff's Subdivision No. 4)
LOCATED IN THE NW1/4 OF THE SW1/4 SECTION 3, T1N, R8E, BHM
RAPID CITY, PENNINGTON COUNTY, SOUTH DAKOTA



MARCH 13, 2008

50 100 200

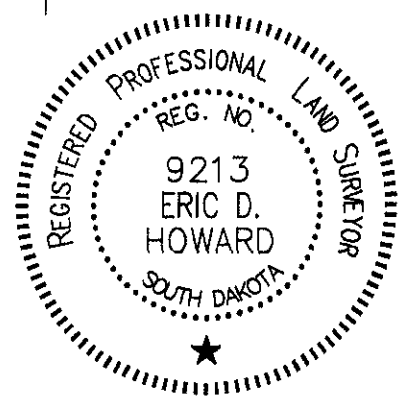
SCALE 1" = 100'

RECEIVED

MAR 29 2008

Rapid City Growth Management Department

Renner & Associates, LLC.



616 Sixth St. * Rapid City, SD 57701 * 605/721-7310
 FAX: 605/721-7313 * E-MAIL: Gary@RennerAssoc.com