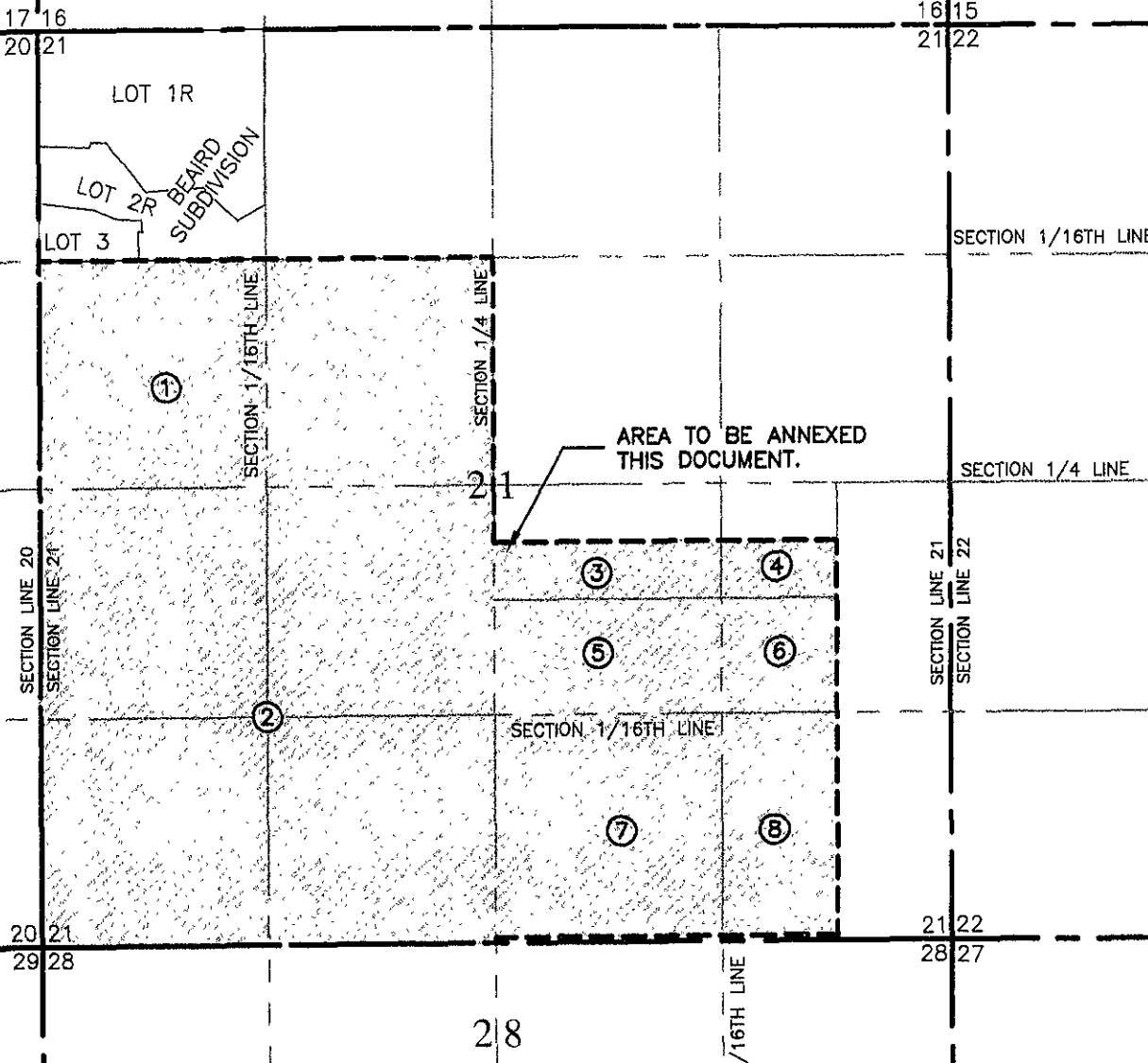
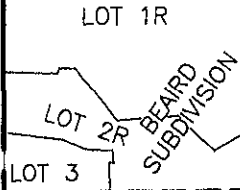


AREA TO BE ANNEXED LOCATED IN SECTION 21

T2N, R8E, BHM
PENNINGTON COUNTY, SOUTH DAKOTA

MAY 6, 2008
N.T.S.



AREA TO BE ANNEXED
THIS DOCUMENT.

- ① S1/2-NW1/4, SECTION 21
- ② SW1/4, SECTION 21
- ③ S1/2-N1/2-NW1/4-SE1/4, SECTION 21
- ④ S1/2-NW1/4-NE1/4-SE1/4, SECTION 21
- ⑤ S1/2-NW1/4-SE1/4, SECTION 21
- ⑥ SW1/4-NE1/4-SE1/4, SECTION 21
- ⑦ SW1/4-SE1/4 LESS THE S33', SECTION 21
- ⑧ W1/2-SE1/4-SE1/4 LESS THE S33', SECTION 21

Renner & Associates, LLC.

616 Sixth St. * Rapid City, SD 57701 * 605/721-7310

FAX: 605/721-7313 * E-MAIL: Gary@RennerAssoc.com

Spargfish Office: 605/717-0016

