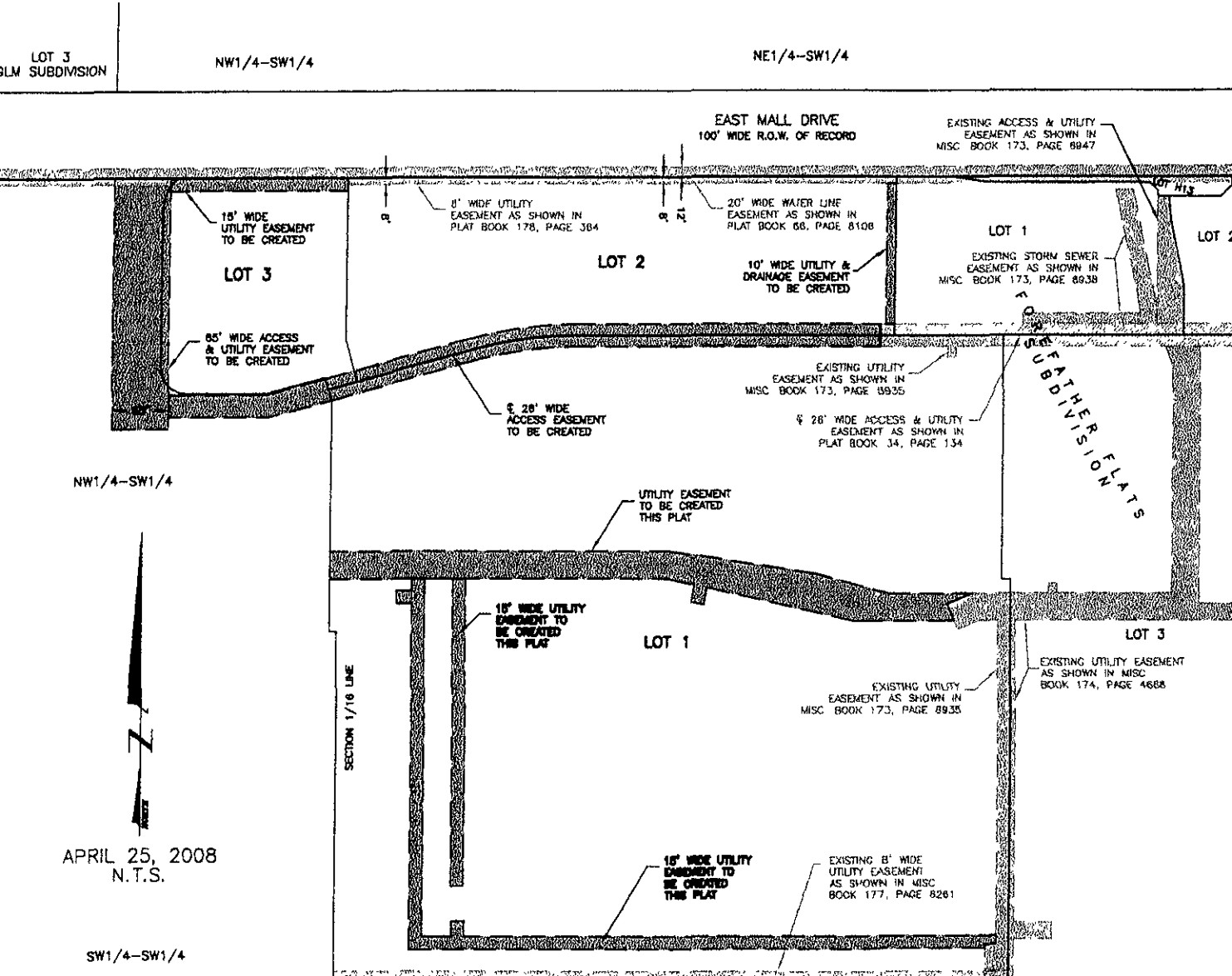


PLAT OF LOTS 1-3, BLOCK 1 THE GATEWAY SUBDIVISION

(formerly a portion of the SW1/4)
LOCATED IN THE SW1/4,
SECTION 28, T2N, R8E, BHM,
RAPID CITY, PENNINGTON COUNTY, SOUTH DAKOTA



NW1/4-SW1/4

APRIL 25, 2008
N.T.S.

SW1/4-SW1/4

INTERSTATE I-90

RECEIVED

Renner & Associates, LLC.

APR 25 2008



CITY HALL 1903

616 Sixth St. * Rapid City, SD 57701 * 605/721-7310 Rapid City, SD 57701
 FAX: 605/721-7313 * E-MAIL: Gary@RennerAssoc.com
 * Spearfish 605/717-0016 *