


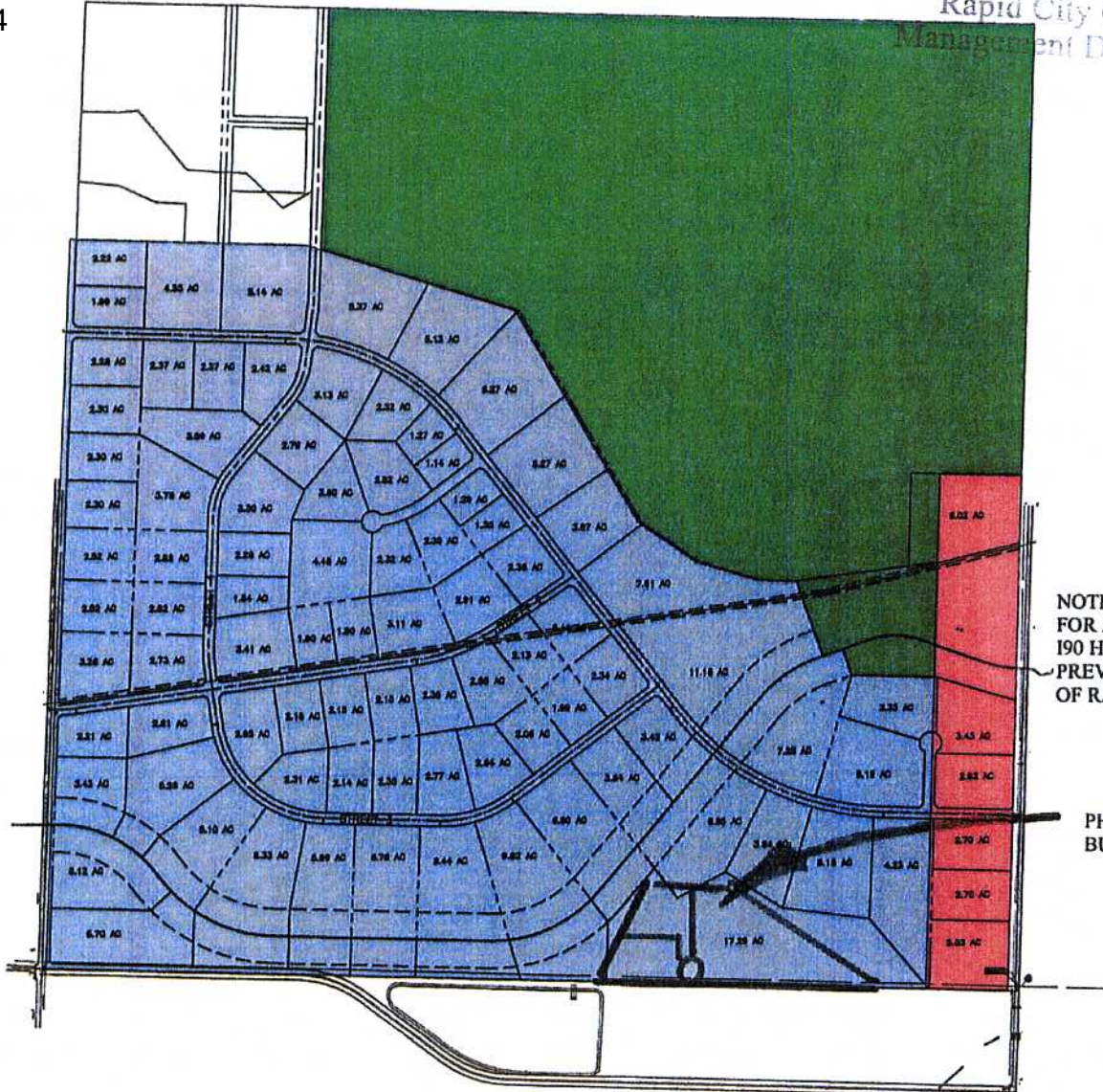


COLOR	PROPOSED ZONING
	PUBLIC/PARK
	GENERAL COMMERCIAL
	LIGHT INDUSTRIAL



PRELIMINARY FOR REVIEW ONLY

NOTE: THIS CONCEPTUAL MASTERPLAN FOR AREA NORTH OF EXISTING 190 HEARTLAND BUSINESS PARK PREVIOUSLY SUBMITTED TO CITY OF RAPID CITY BY DDI

PHASE 4 OF 190 HEARTLAND BUSINESS PARK.



Scale	SCALE
Designed by	Small Etc
Design Date	Nov 2008
Project Name	190 HEARTLAND BUSINESS PARK
Client	DDI
Drawn by	Small Etc
Checked by	Small Etc
Scale	

600 ACRE DEVELOPMENT NORTHEAST RAPID CITY

PROPOSED LAND USE

