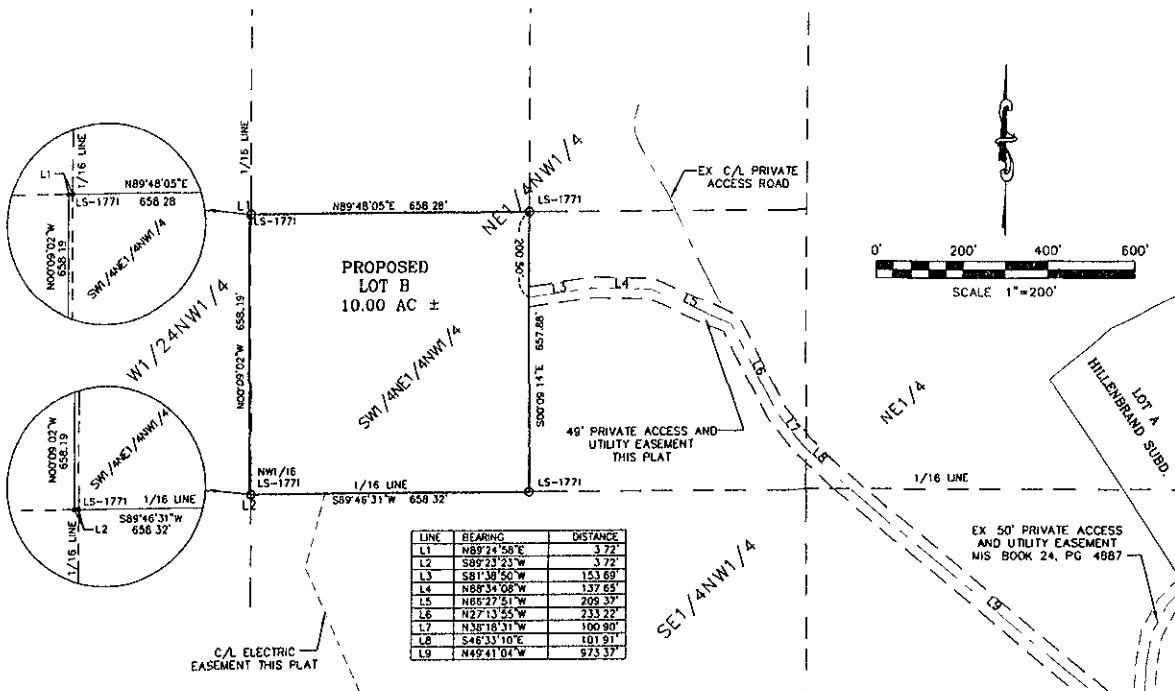


08PL060

PLAT OF DEWALD'S SUBDIVISION, LOT B;
 LOCATED IN THE SW1/4NE1/4NW1/4 AND A PORTION OF W1/2NW1/4 OF SECTION 12,
 T1N, R6E, B.H.M., CITY OF RAPID CITY, PENNINGTON COUNTY, SOUTH DAKOTA.



NOTES

- CATRON CROSSING SUBDIVISION AND STREETS RECORDED IN PLAT BOOK 34, PAGE 173
- LOT 11-3 RECORDED IN HIGHWAY BOOK 11, PAGE 163
- TOTAL PLATTED AREA= 92 ACRES
- ANY MAJOR DRAINAGE EASEMENTS SHOWN HEREON SHALL BE KEPT FREE OF ALL OBSTRUCTIONS INCLUDING, BUT NOT LIMITED TO, BUILDINGS, WALLS, FENCES, HEDGES, TREES AND SHRUBS. THESE EASEMENTS GRANT TO ALL PUBLIC AUTHORITIES THE RIGHT TO CONSTRUCT, OPERATE, MAINTAIN, INSPECT AND REPAIR SUCH IMPROVEMENTS AND STRUCTURES AS IT DEEMS EXPEDIENT TO FACILITATE DRAINAGE FROM ANY SOURCE.
- ALL BUILDERS SHALL MAINTAIN EXISTING DRAINAGE FACILITIES IN ACCORDANCE TO APPROVED CONSTRUCTION PLANS.
- ACREAGE SHOWN ON LOTS INCLUDES ANY EASEMENTS
- MINOR DRAINAGE AND UTILITY EASEMENTS ARE HEREBY ESTABLISHED 8' WIDE ON THE INTERIOR SIDE OF ALL LOT LINES AND RIGHT-OF-WAY (EXCEPT WHERE MAJOR DRAINAGE EASEMENTS ARE LOCATED)

RECEIVED

APR 25 2008