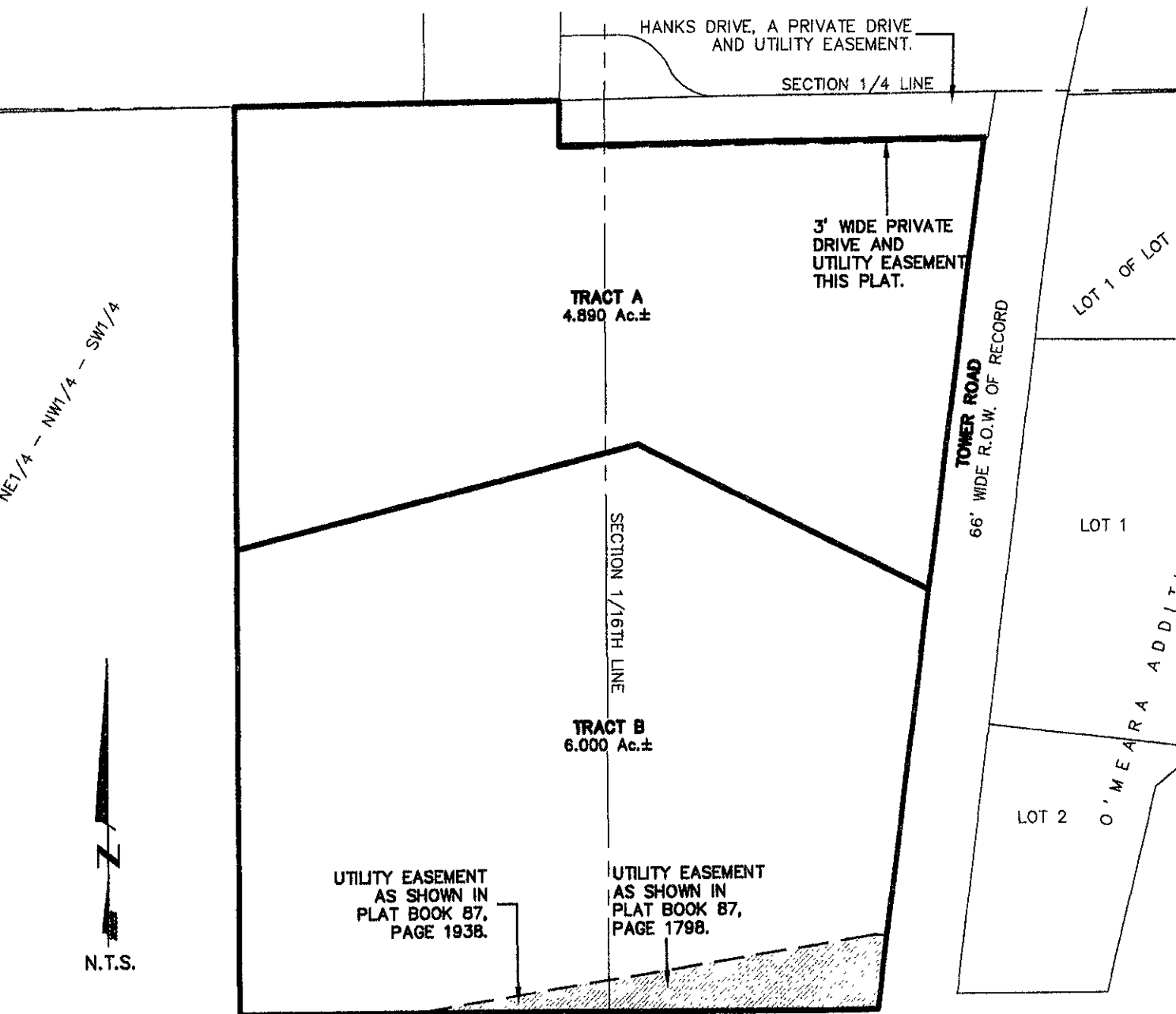


PLAT OF TRACTS A AND B, TOWER PLACE SUBDIVISION

(description formerly as shown in Book 57 of Deeds, Page 7057,
recorded on January 26, 1995.)

LOCATED IN THE N1/2 OF THE SW1/4,
SECTION 14, T1N, R7E, BHM
RAPID CITY, PENNINGTON COUNTY, SOUTH DAKOTA



NE1/4 - NW1/4 - SW1/4



66' PUBLIC ROW

LOT A

80' WIDE PUBLIC R.O.W.

LOT B

Renner & Associates, LLC.

616 Sixth St. * Rapid City, SD 57701 * 605/721-7310
FAX: 605/721-7313 * E-MAIL: Gary@RennerAssoc.com
* Spearfish 605/717-0016 *

