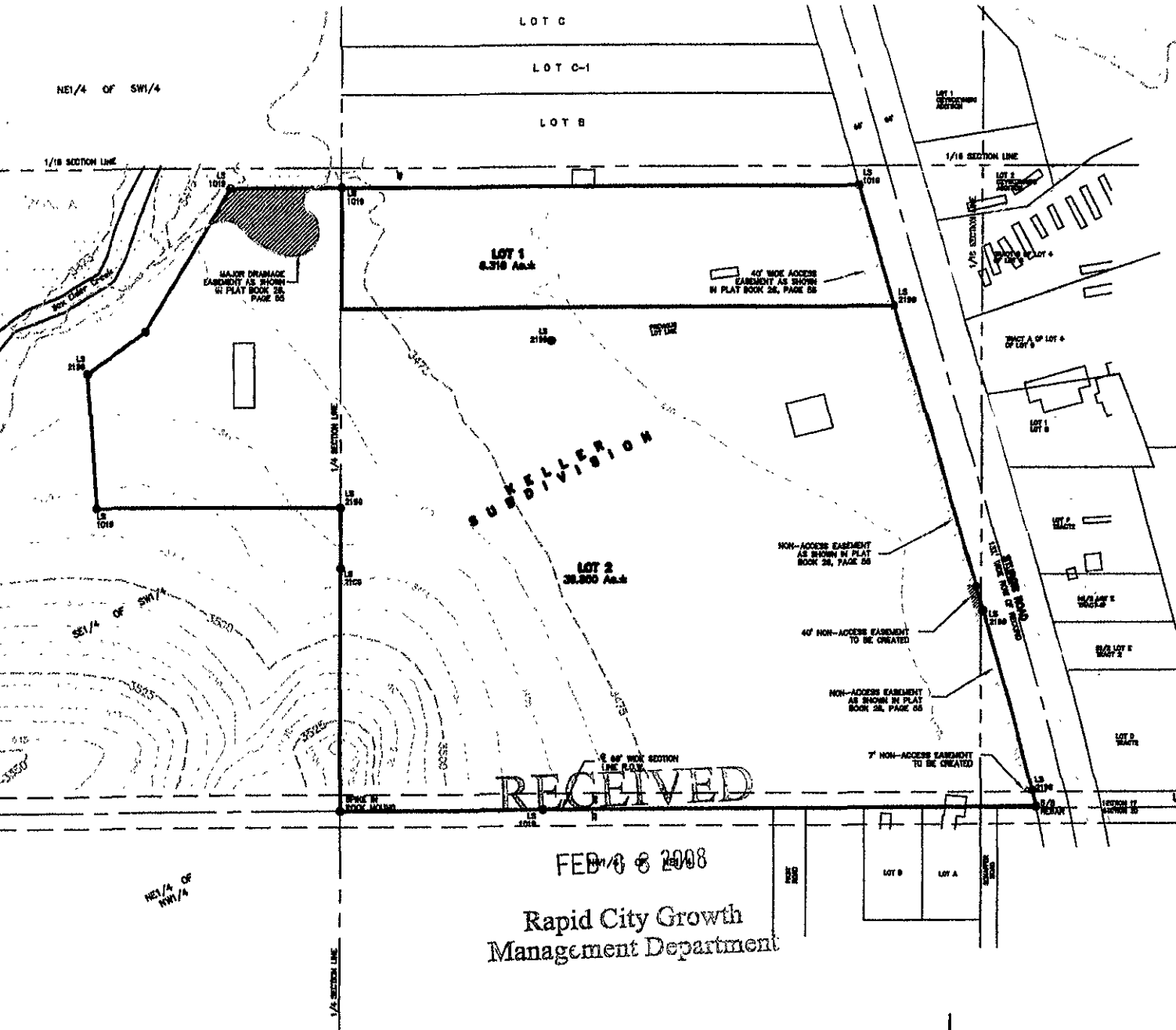


# POST MINING GRADING PLAN LOTS 1 AND 2 OF KELLER SUBDIVISION

LOCATED IN THE S1/2 OF THE SE1/4  
SECTION 17, T2N, R7E, BHM  
RAPID CITY, PENNINGTON COUNTY, SOUTH DAKOTA



**RECEIVED**  
 FEB 06 2008  
 Rapid City Growth  
 Management Department

**ZONE-A**  
 100 YEAR FLOOD  
 BOUNDARY

FLOOD INFORMATION TAKEN  
 FROM F.I.R.M. PANEL  
 #460064-0318-B,  
 DECEMBER 1, 1981



**Renner & Associates, LLC.**

616 Sixth St. \* Rapid City, SD 57701 \* 605/721-7310  
 FAX: 605/721-7313 \* E-MAIL: Gary@RennerAssoc.com

FEBRUARY 8, 2008  
 SCALE: NTS

