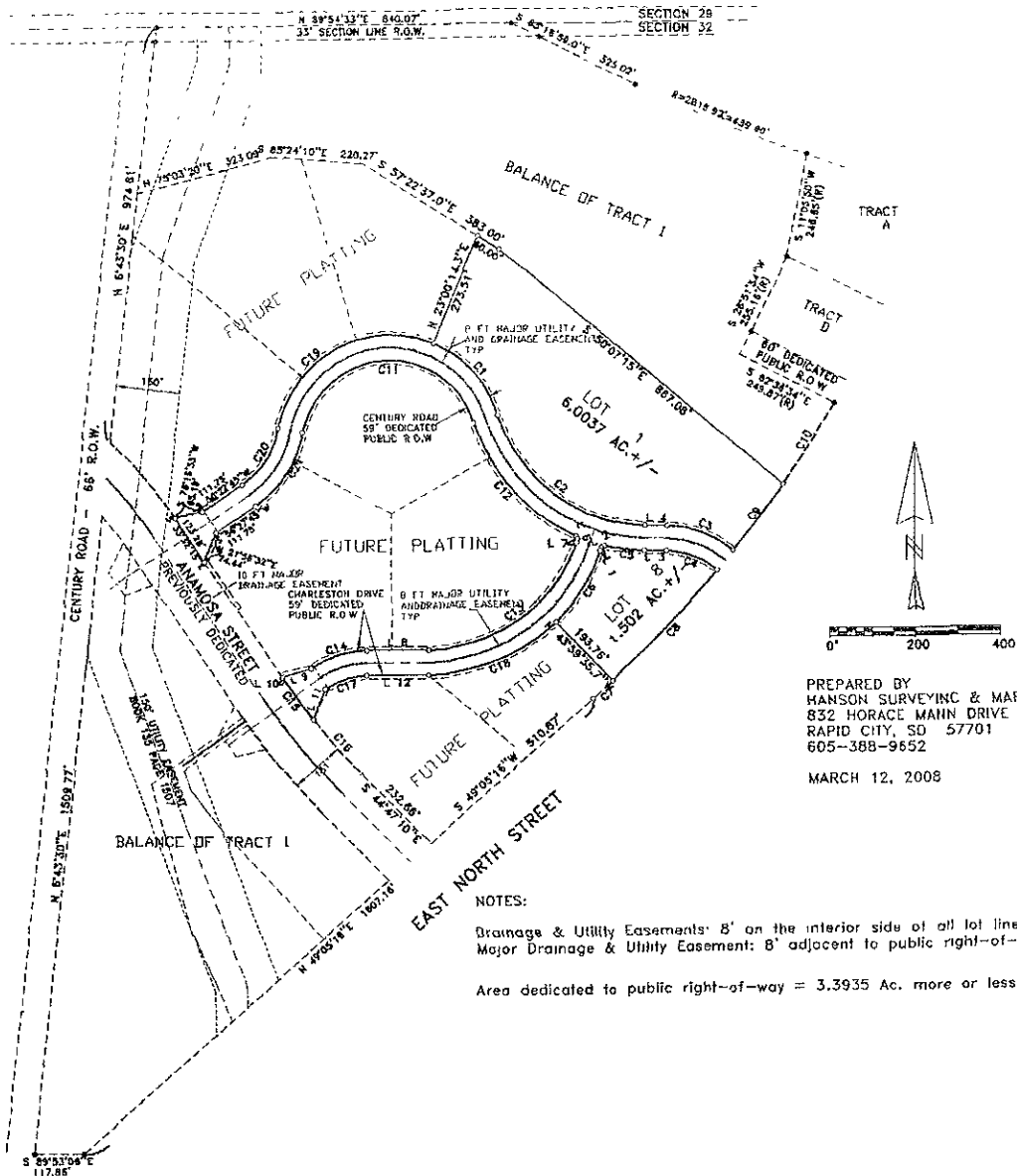


LOTS 1 & 8 OF ANAMOSA CROSSING SUBDIVISION
 FORMERLY A PORTION OF TRACT 1 OF CENTURY 21 SUBDIVISION
 LOCATED IN NW1/4 OF SECTION 32, T24. R8E, B.H.M
 RAPID CITY, PENNINGTON COUNTY, SOUTH DAKOTA



PREPARED BY
 HANSON SURVEYING & MAPPING
 832 HORACE MAHN DRIVE
 RAPID CITY, SD 57701
 605-388-9652

MARCH 12, 2008

NOTES:
 Drainage & Utility Easements: 8' on the interior side of all lot lines
 Major Drainage & Utility Easement: 8' adjacent to public right-of-way.

Area dedicated to public right-of-way = 3.3935 Ac. more or less.