

EXISTING SITE PLAN WITH PLAT OVERLAY

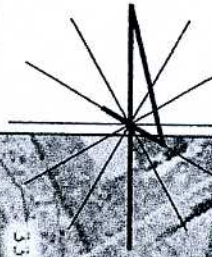
LEGAL DESCRIPTION:

TRACT C OF C.D. ROUNDS SUBDIVISION

08SV022

LOCATED IN SE1/4 SECTION 33, T2N, R7E, BHM.

RAPID CITY, PENNINGTON COUNTY, SOUTH DAKOTA



DATE: 3/28/2008

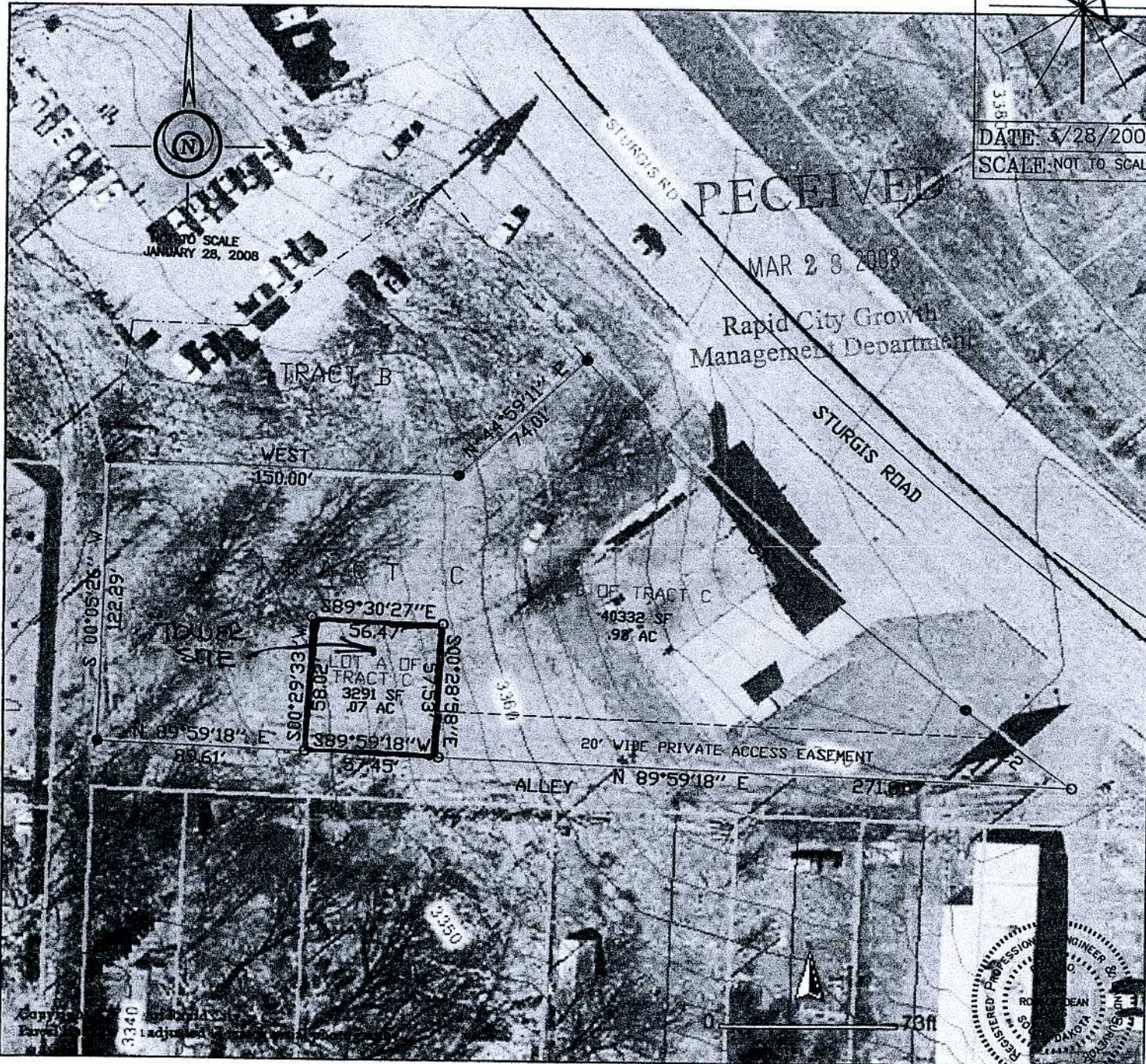
SCALE: NOT TO SCALE

RECEIVED

MAR 28 2008

Rapid City Growth
Management Department

PHOTO SCALE
JANUARY 28, 2008



I, Ronald D. Davis, Registered Land Surveyor No. 3095 of the State of South Dakota, do hereby certify that the measurements shown hereon were done by me on July 7, 2007 by field survey. This drawing represents the property as I found it on July 7, 2007 and all of the measurements shown are true and correct to the best of my knowledge.

DAVIS ENGINEERING, INC., 1060 KINGS ROAD, RAPID CITY, SD 57702

