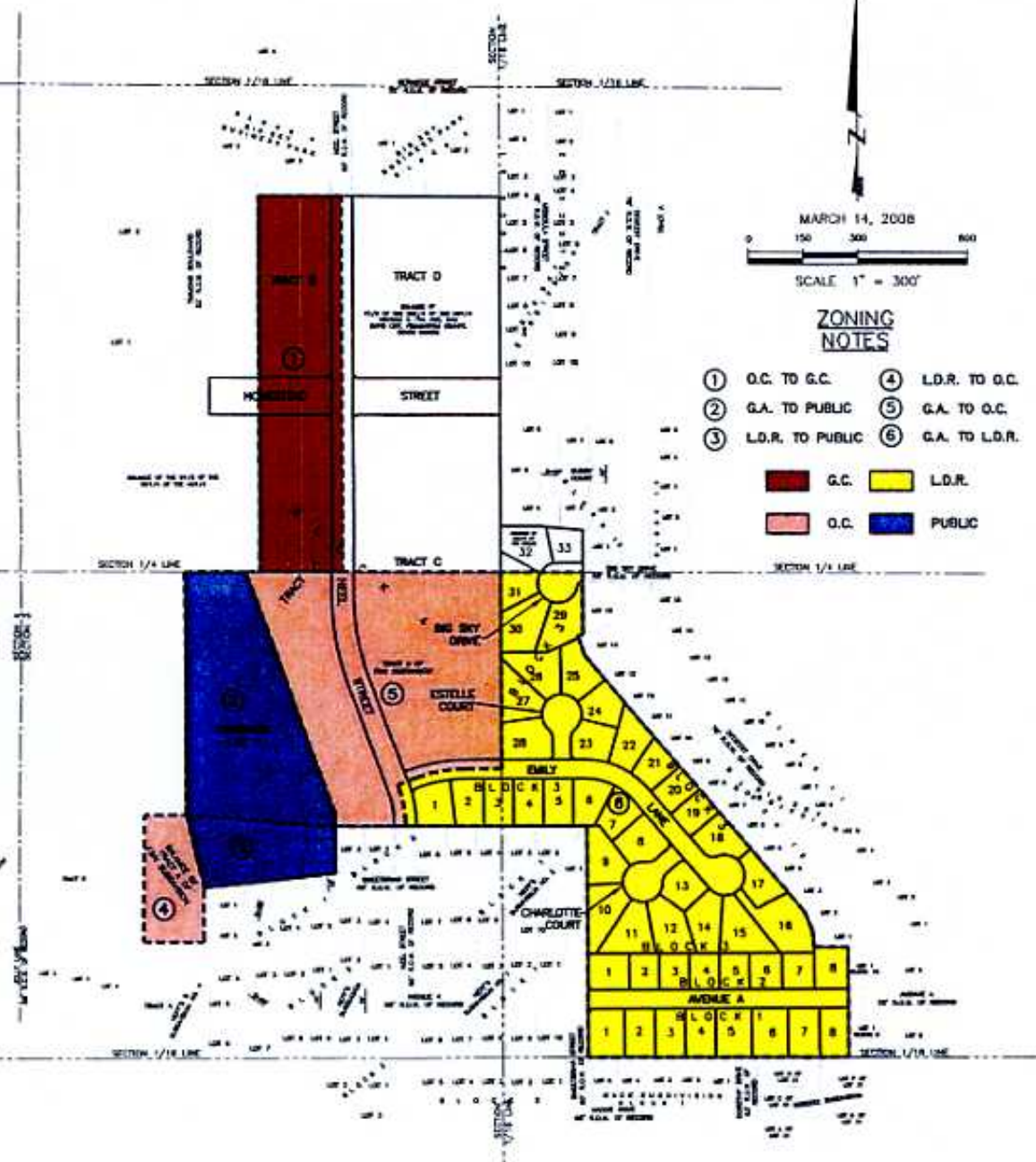


FUTURE ZONING MAP OF  
**LOTS 1-8 OF BLOCK 1; LOTS 1-8 OF BLOCK 2; LOTS 1-33 OF BLOCK 3;**  
**08RZ010 TRACTS A, B, C, & D OF BLOCK 4; & DRAINAGE LOT 1,**  
**HOMESTEAD PLAZA SUBDIVISION**  
**AND DEDICATED RIGHT-OF-WAY OF AVENUE A, BIG SKY DRIVE, CHARLOTTE COURT,**  
**EMILY LANE, ESTELLE COURT, HOMESTEAD STREET, & NEEL STREET**  
 (formerly A Portion of Tract A of F&N Subdivision, Balance of the E1/2 of the SW1/4 of the NW1/4,  
 & Balance of the SE1/4 of the NW1/4)  
 LOCATED IN THE S1/2 OF THE NW1/4 &  
 IN THE N1/2 OF THE SW1/4  
 SECTION 3, T1N, R8E, B1M  
 RAPID CITY, PENNINGTON COUNTY, SOUTH DAKOTA



**ZONING NOTES**

- |   |                  |   |                |
|---|------------------|---|----------------|
| ① | O.C. TO G.C.     | ④ | L.D.R. TO O.C. |
| ② | G.A. TO PUBLIC   | ⑤ | G.A. TO O.C.   |
| ③ | L.D.R. TO PUBLIC | ⑥ | G.A. TO L.D.R. |
- 
- |   |   |
|---|---|
| <span style="display: inline-block; width: 15px; height: 15px; background-color: red; border: 1px solid black;"></span> G.C.    | <span style="display: inline-block; width: 15px; height: 15px; background-color: yellow; border: 1px solid black;"></span> L.D.R. |
| <span style="display: inline-block; width: 15px; height: 15px; background-color: blue; border: 1px solid black;"></span> PUBLIC | <span style="display: inline-block; width: 15px; height: 15px; background-color: pink; border: 1px solid black;"></span> O.C.     |



**Renner & Associates, LLC.**

616 Sixth St. • Rapid City, SD 57701 • 605/721-7310  
 FAX: 605/721-7313 • E-MAIL: Gary@RennerAssoc.com  
 • Spearfish 605/717-0016 •