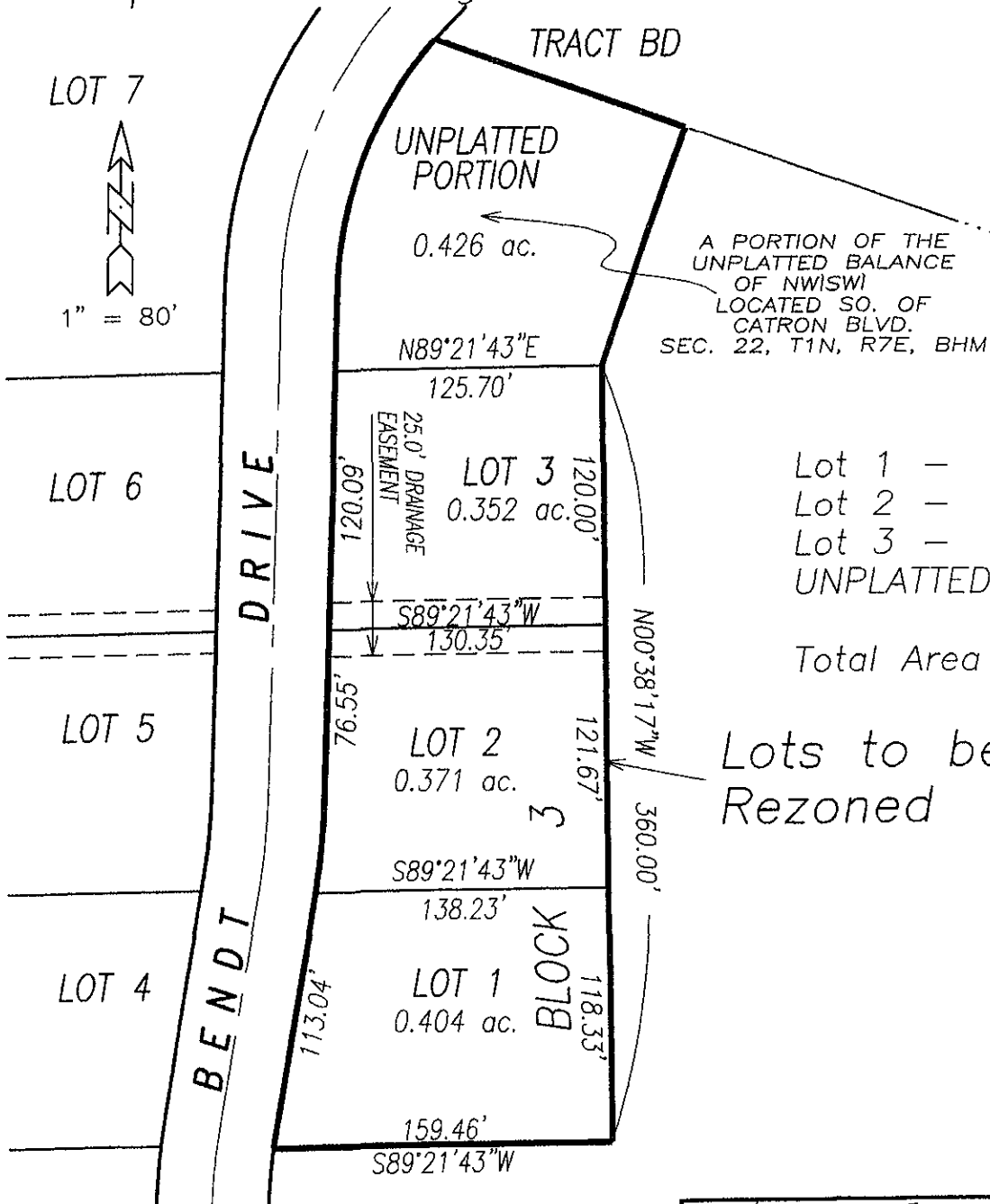


# Exhibit of Lots 1, 2 & 3, Block 3 of Stoney Creek South Subdivision And Unplatted Portion of NW1SW1 Sec. 22, T1N, R7E, BHM

Current Zoning = LDR

Proposed Zoning = Office Commercial



Lot 1 -	0.404 Ac.
Lot 2 -	0.371 Ac.
Lot 3 -	0.352 Ac.
UNPLATTED -	0.426 Ac.

Total Area = 1.553 Ac.

Lots to be  
Rezoned

**Boschee Engineering**  
 429 Kansas City Street, Suite 16  
 Rapid City, South Dakota, 57701  
 (605) 342 - 8747  
 email: boschee\_eng@midconetwork.com