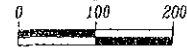


# Plat of Lots 2A, 2B and 2C of Lot 2 of Potts Subdivision and Dedicated Right-of-Way 08PL051

(Formerly all of Lot 2 of Potts Subdivision)

Located in the SW1/4 SW1/4 SE1/4 & SE1/4 SW1/4 SE1/4 of Section 22, T1N, R7E, BHM.,  
Rapid City, Pennington County, South Dakota



1" = 100'  
March 26, 2008

Prepared by  
F&K Land Surveying &  
Consulting Engineers, Inc.  
P.O. Box 8154  
Rapid City, South Dakota 57709  
605-449-1336  
Project # 04-11-02

Covenant Drive containing 0.83 Acres more or less  
as shown hereon is hereby dedicated as public  
right-of-way, however such dedication shall not  
be construed to mean a donation of the fee of  
said land.

## LEGEND

- \* = Found Survey Monument as noted
- ⊙ = Set Rebar with cap marked "RW Flak 6565"
- = Calculated from previous plate

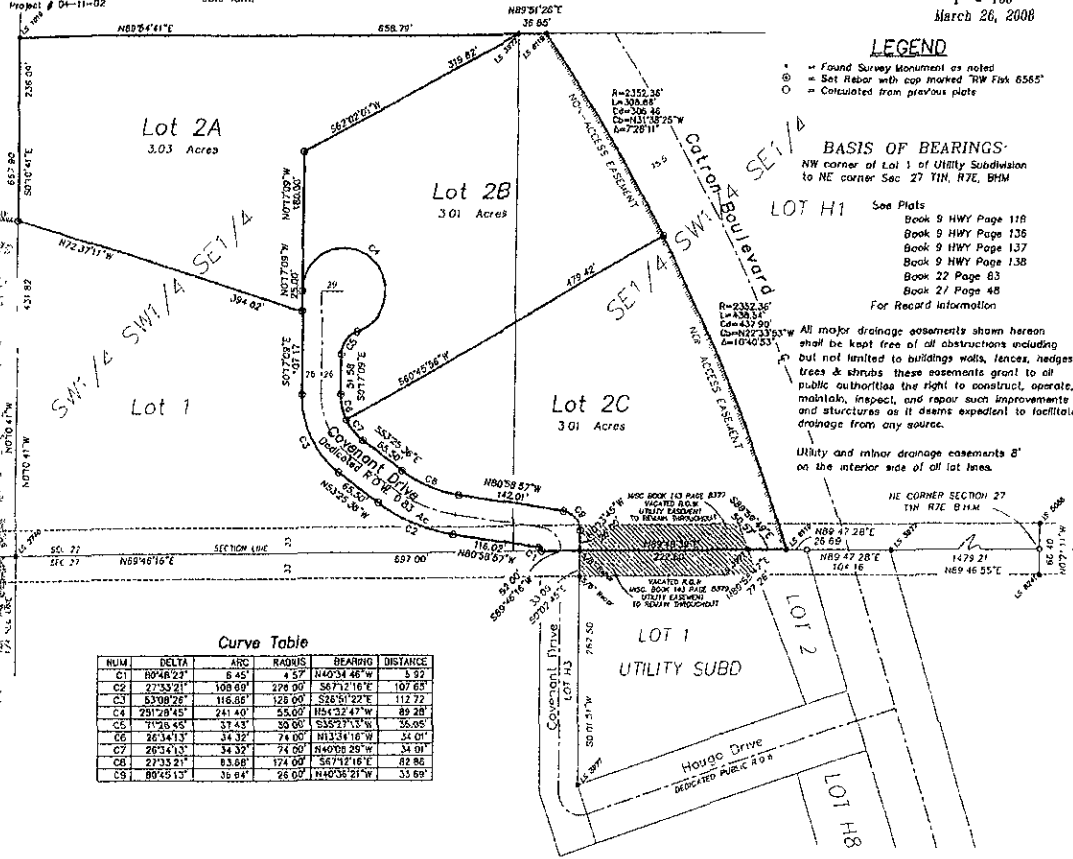
## BASIS OF BEARINGS

NW corner of Lot 1 of Utility Subdivision  
to NE corner Sec 27 T1N, R7E, BHM

See Plats  
Book 9 HWY Page 118  
Book 9 HWY Page 136  
Book 9 HWY Page 137  
Book 9 HWY Page 138  
Book 22 Page 63  
Book 27 Page 48  
For Record Information

All major drainage easements shown hereon  
shall be kept free of all obstructions including  
but not limited to buildings walls, fences, hedges  
trees & shrubs these easements grant to all  
public authorities the right to construct, operate,  
maintain, inspect, and repair such improvements  
and structures as it deems expedient to facilitate  
drainage from any source.

Utility and minor drainage easements 8'  
on the interior side of all lot lines.



Curve Table

NUM	DELTA	ARC	RADIUS	BEARING	DISTANCE
C1	80°48'24"	8.45'	4.57'	N40°34'48"W	1.32'
C2	27°33'21"	108.00'	228.00'	S67°12'16"E	107.65'
C3	63°08'26"	116.86'	128.00'	S26°51'22"E	112.72'
C4	291°28'45"	241.40'	55.00'	N54°32'47"W	89.28'
C5	11°58'45"	37.43'	39.00'	S33°37'33"W	35.06'
C6	26°34'13"	34.32'	74.00'	N13°34'16"W	34.01'
C7	26°34'13"	34.32'	74.00'	N40°08'29"W	34.01'
C8	27°33'21"	83.68'	174.00'	S67°12'16"E	82.86'
C9	80°45'13"	35.84'	26.00'	N40°38'21"W	35.69'