

# EXISTING SITE PLAN WITH PLAT OVERLAY

LEGAL DESCRIPTION:

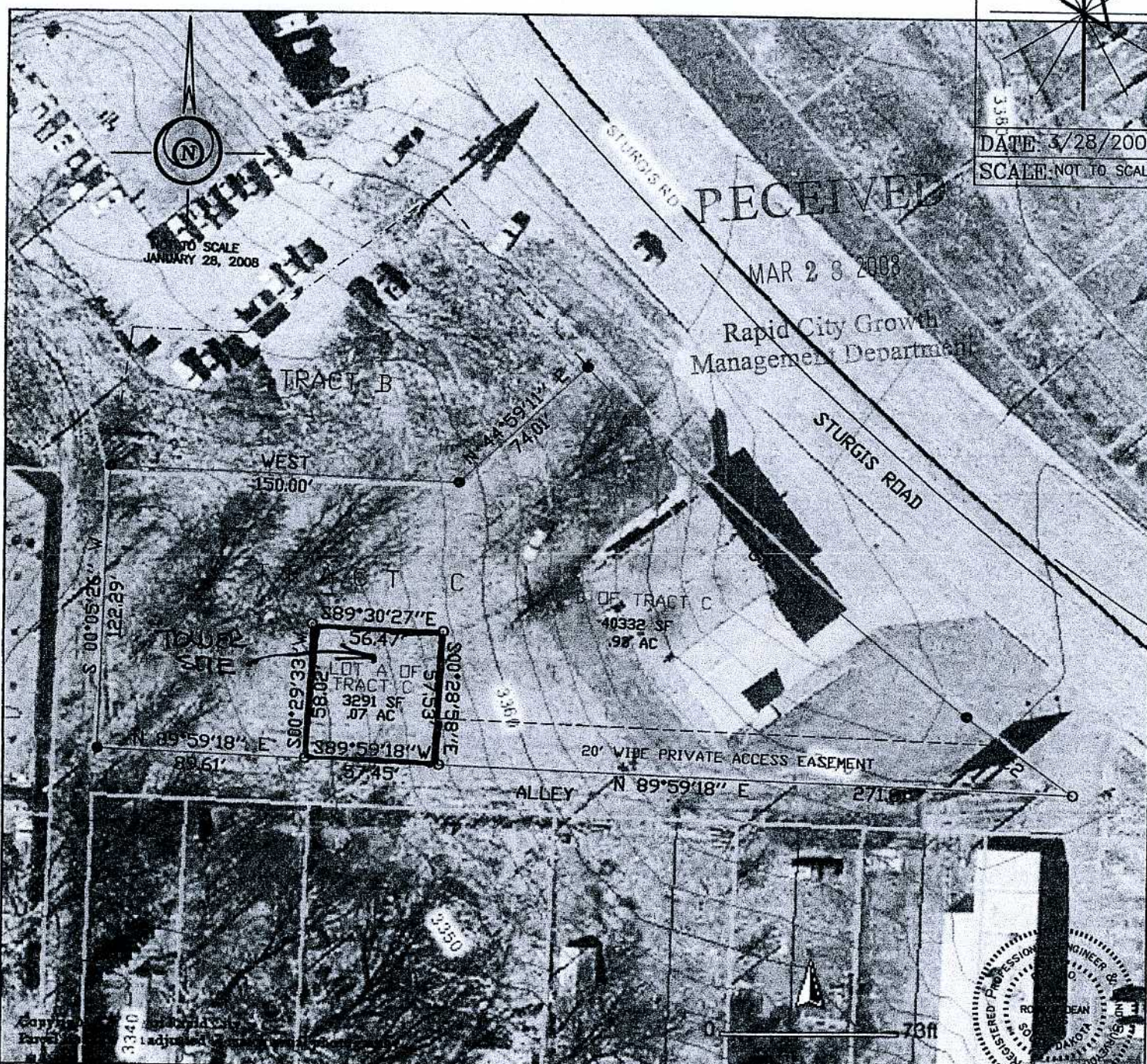
TRACT C OF C.D. ROUNDS SUBDIVISION

08PL046

LOCATED IN SE1/4 SECTION 33, T2N, R7E, BHM.

RAPID CITY, PENNINGTON COUNTY, SOUTH DAKOTA

3.18  
DATE: 3/28/2008  
SCALE: NOT TO SCALE



I, Ronald D. Davis, Registered Land Surveyor No. 3095 of the State of South Dakota, do hereby certify that the measurements shown hereon were done by me on July 7, 2007 by field survey. This drawing represents the property as I found it on July 7, 2007 and all of the measurements shown are true and correct to the best of my knowledge.

DAVIS ENGINEERING, INC., 1060 KINGS ROAD, RAPID CITY, SD 57702