

June 22, 2007, 11:43 AM EDT
 Drawing Office: 1000 West 10th Street, Rapid City, SD 57702
 Drawing Office: 1000 West 10th Street, Rapid City, SD 57702

1830 West Fulton Street
 Rapid City, SD 57702
 Phone: (605) 341-7800
 Fax: (605) 341-7864
 www.catecengineering.com



DESIGNED	TS
DETAILED	RF
CHECKED	TS
APPROVED	X
DATE	6/21/07

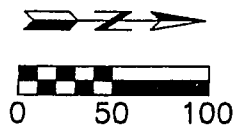
EXISTING SITE PLAN

SHEET DESCRIPTION:

SIGN VARIANCE AND PLAT OF
 LOT 1 & LOT 2 BLOCK 1
 WALPOLE HEIGHTS SUBDIVISION

PROJECT:

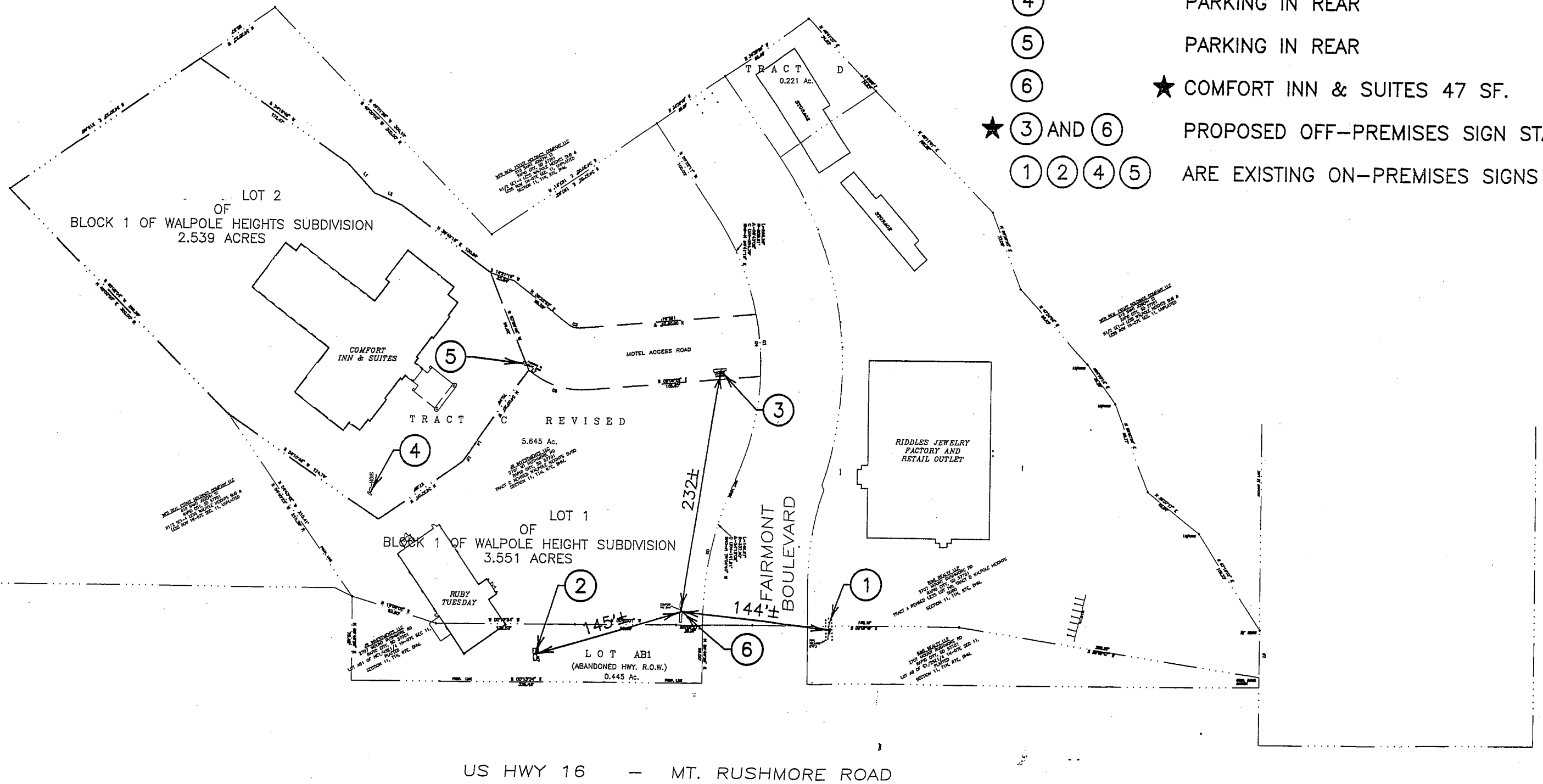
SHEET:
 1 OF 5



SIGN NO.

SIGN DESCRIPTION

- ① RUSHMORE GOLD
- ② RUBY TUESDAY
- ★ ③ COMFORT INN & SUITES 28 SF.
- ④ PARKING IN REAR
- ⑤ PARKING IN REAR
- ★ ⑥ COMFORT INN & SUITES 47 SF.
- ★ ③ AND ⑥ PROPOSED OFF-PREMISES SIGN STATUS
- ① ② ④ ⑤ ARE EXISTING ON-PREMISES SIGNS



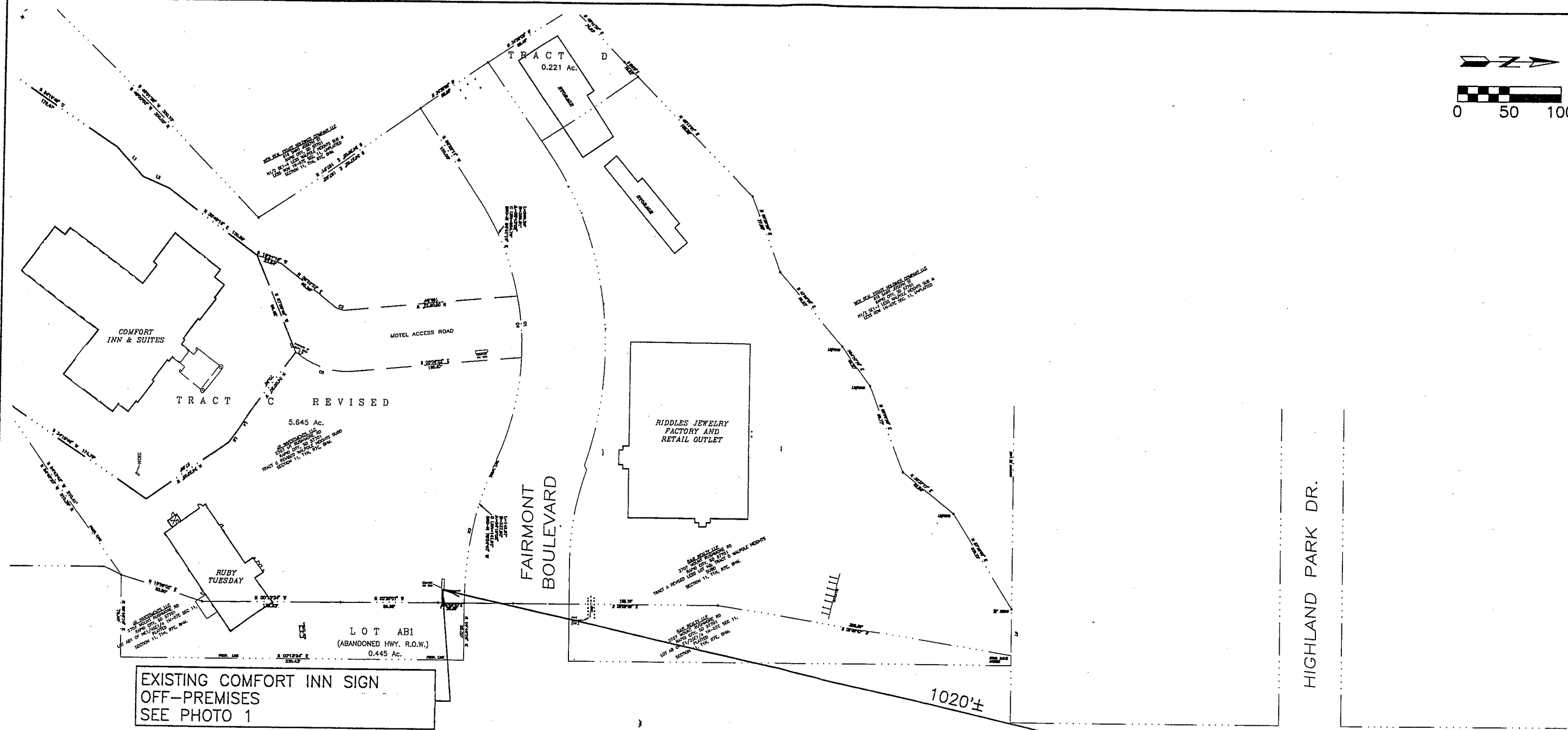
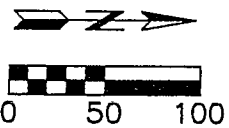
1830 West Fulton Street
 Rapid City, SD 57702
 Phone: (605) 341-7800
 Fax: (605) 341-7864
 www.cetecengineering.com



SURVEYED	KP	DATE	6/21/07
DETAILED	RF		
CHECKED	GW		
APPROVED			

EXISTING ON-SITE
 SIGN LOCATIONS

SIGN VARIANCE AND PLAT OF
 LOT 1 & LOT 2 BLOCK 1
 BLOCK 1 WALPOLE HEIGHTS SUBDIVISION



EXISTING COMFORT INN SIGN
OFF-PREMISES
SEE PHOTO 1

NEAREST EXISTING
OFF-PREMISES SIGN
SEE PHOTO 2

1830 West Fulton Street
Rapid City, SD 57702
Phone: (605) 341-7800
Fax: (605) 341-7864
www.cetecengineering.com

cetec
ENGINEERING SERVICES, INC.

SURVEYED	KP
DETAILED	RF
CHECKED	GW
APPROVED	
DATE	6/21/07

OFF-PREMISES
SIGN LOCATION

SIGN VARIANCE AND PLAT OF
LOT 1 & LOT 2 BLOCK 1
BLOCK 1 WALPOLE HEIGHTS SUBDIVISION

4 OF 5

1830 West Fulton Street
 Rapid City, SD 57702
 Phone: (605) 341-7800
 Fax: (605) 341-7864
 www.cetecengineering.com