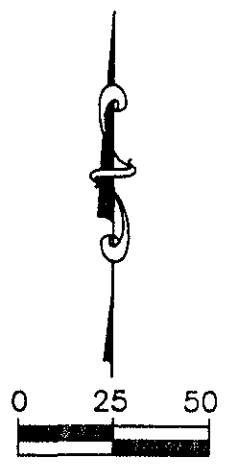
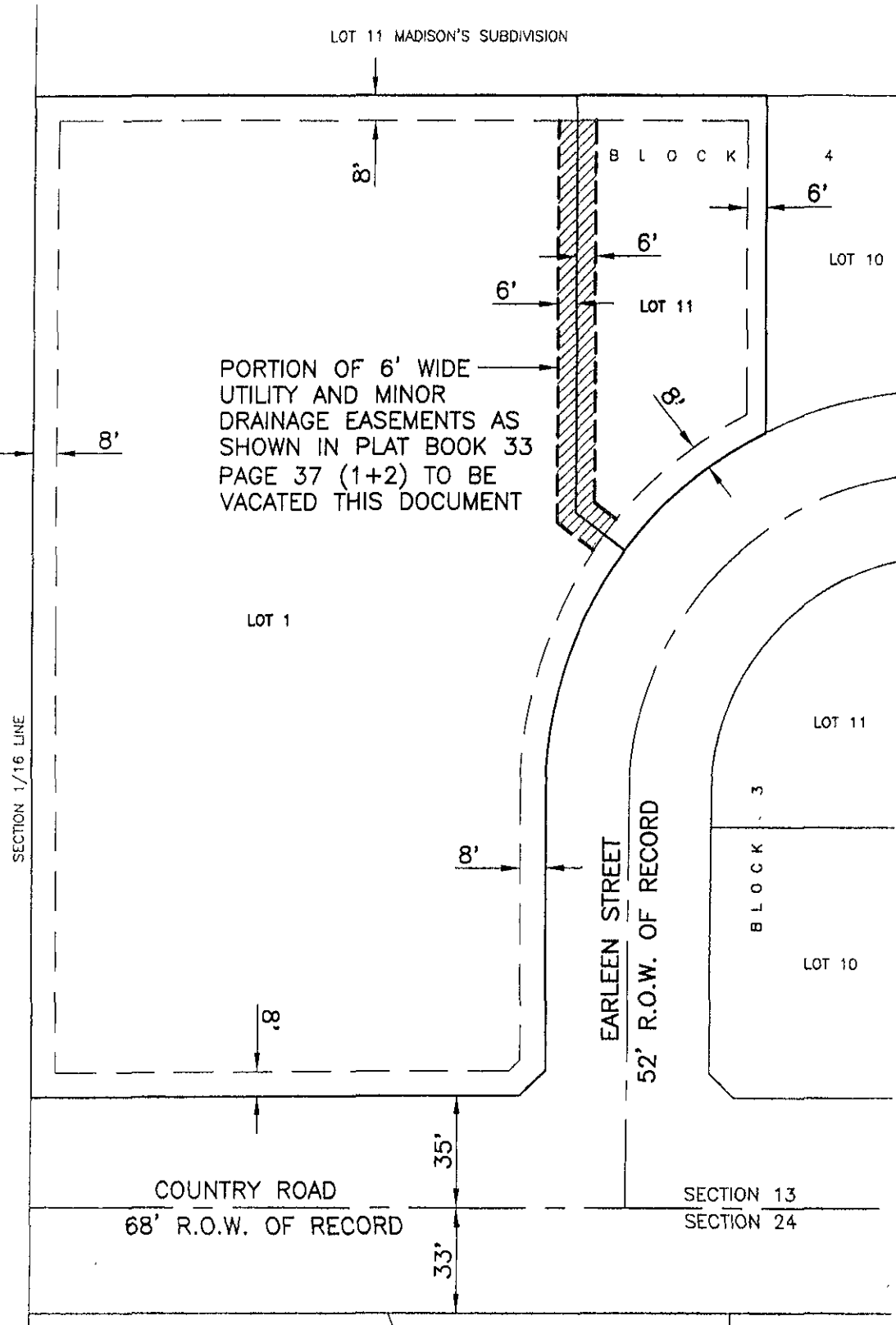


VACATION OF A PORTION OF THE 6' WIDE UTILITY AND MINOR DRAINAGE EASEMENT

LOT 11 BLOCK 4, & LOT 1 BLOCK 5, OF KATELAND SUBDIVISION
LOCATED IN THE SE¼ OF THE SW¼,
SECTION 13, T2N, R7E, BHM,
RAPID CITY, PENNINGTON COUNTY, SOUTH DAKOTA



SCALE: 1" = 50'
MARCH 26, 2008

